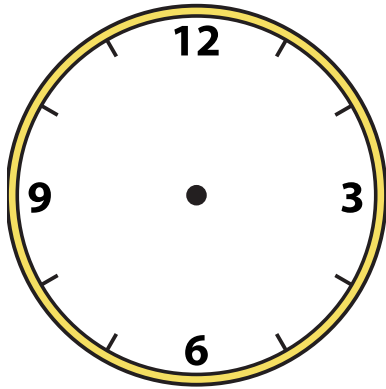




Disegna la lancetta delle ore e dei minuti sull'orologio in modo che rappresenti l'ora indicata.

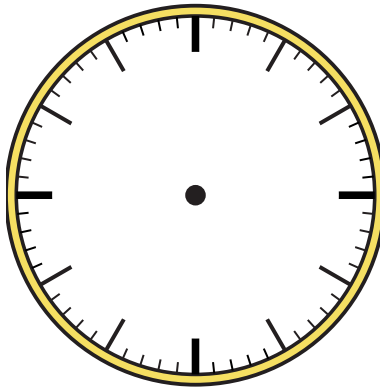
1)

1:35



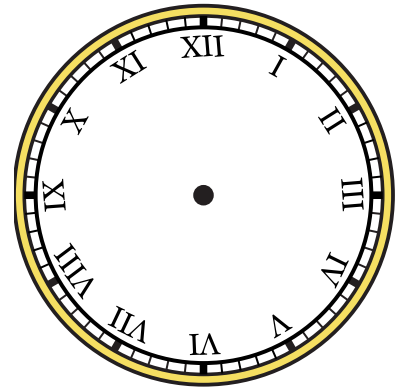
2)

8:20



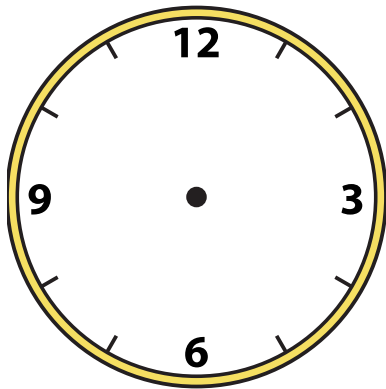
3)

1:10



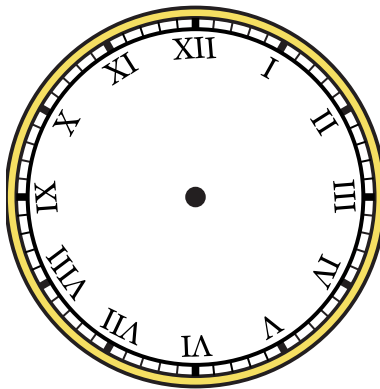
4)

12:40



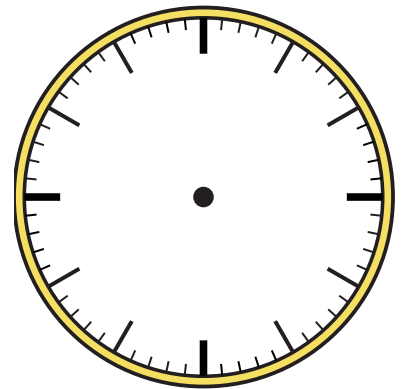
5)

4:15



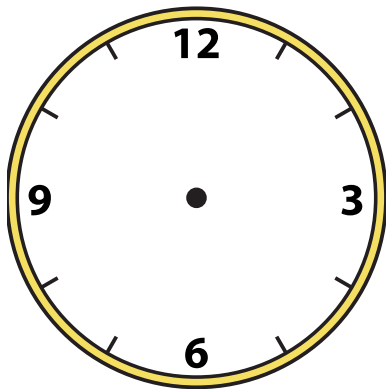
6)

10:15



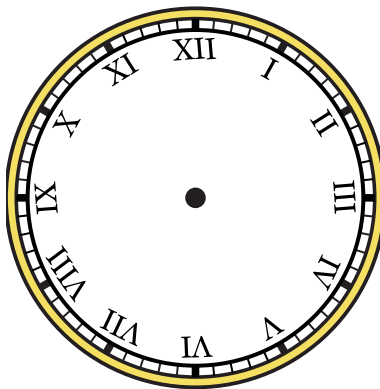
7)

6:55



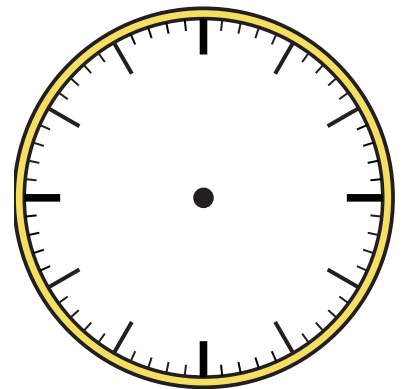
8)

2:55



9)

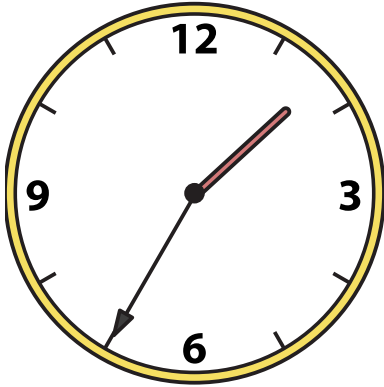
4:25



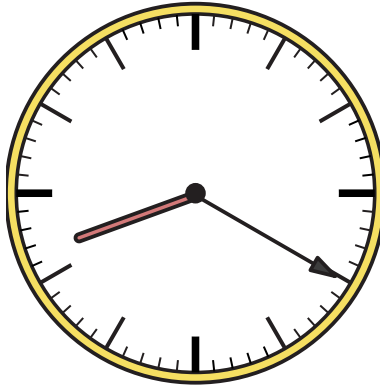


Disegna la lancetta delle ore e dei minuti sull'orologio in modo che rappresenti l'ora indicata.

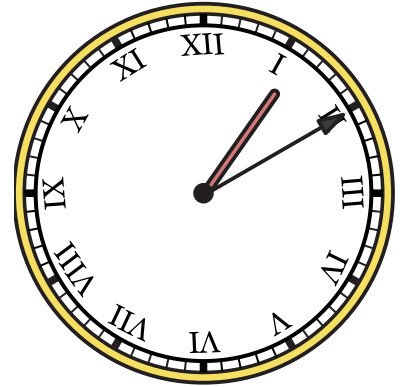
1) 1:35



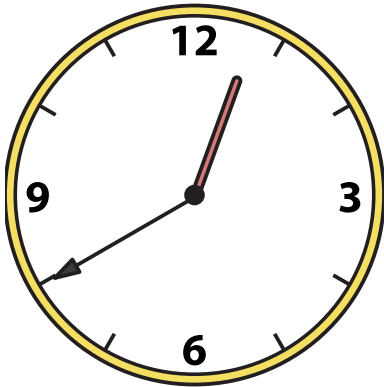
2) 8:20



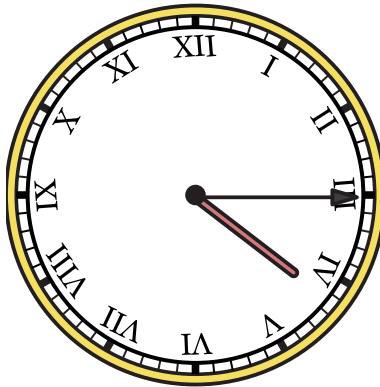
3) 1:10



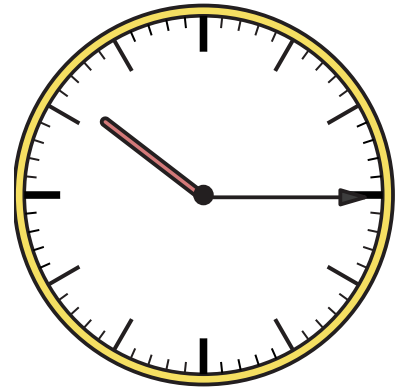
4) 12:40



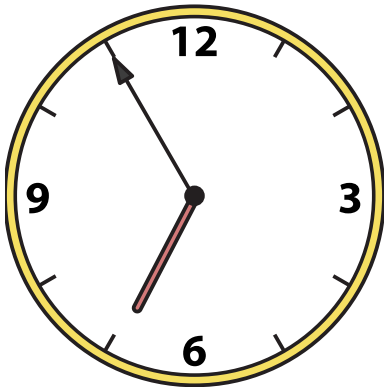
5) 4:15



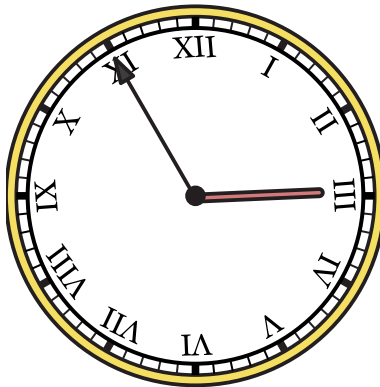
6) 10:15



7) 6:55



8) 2:55



9) 4:25

