



Disegna la lancetta delle ore e dei minuti sull'orologio in modo che rappresenti l'ora indicata.

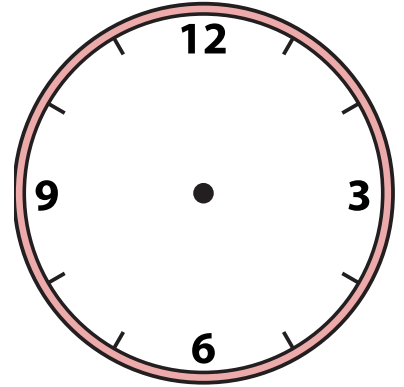
1) 6:54



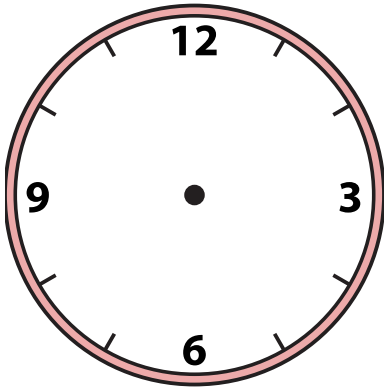
2) 11:34



3) 10:03



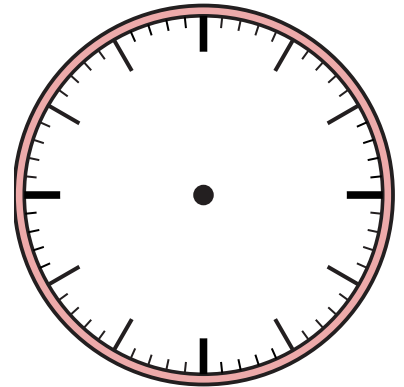
4) 2:13



5) 8:53



6) 8:02



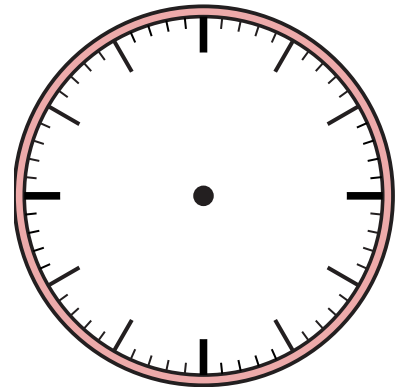
7) 8:15



8) 8:39



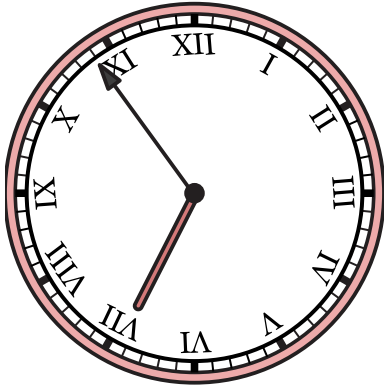
9) 6:38



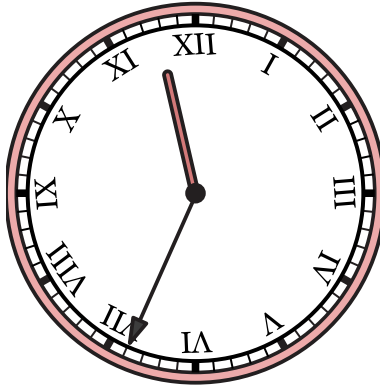


Disegna la lancetta delle ore e dei minuti sull'orologio in modo che rappresenti l'ora indicata.

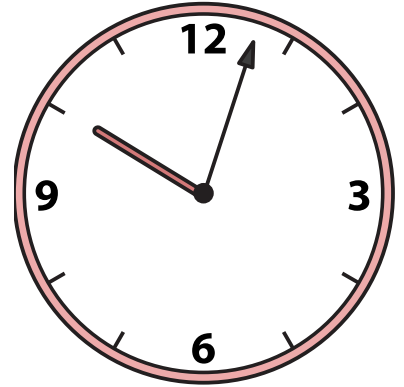
1) 6:54



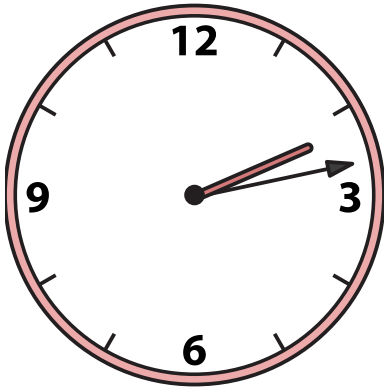
2) 11:34



3) 10:03



4) 2:13



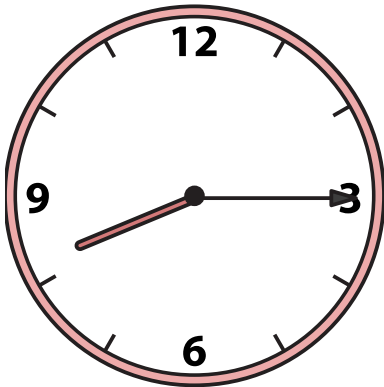
5) 8:53



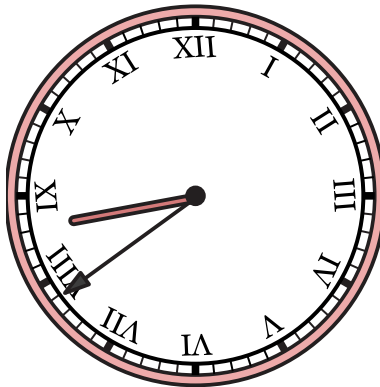
6) 8:02



7) 8:15



8) 8:39



9) 6:38

