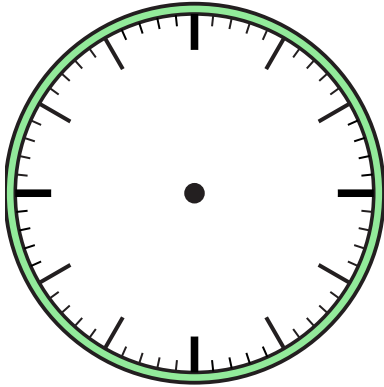




Disegna la lancetta delle ore e dei minuti sull'orologio in modo che rappresenti l'ora indicata.

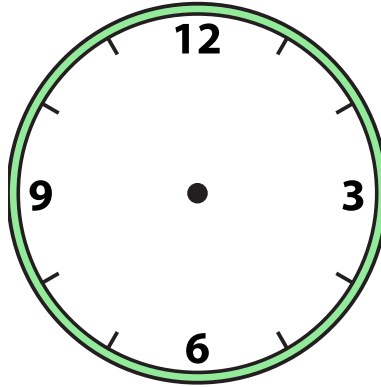
1)

6:00



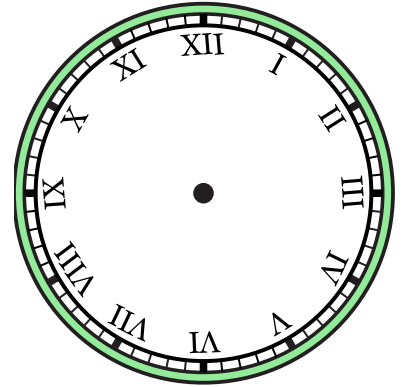
2)

1:00



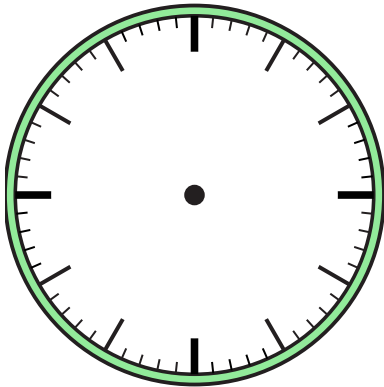
3)

1:30



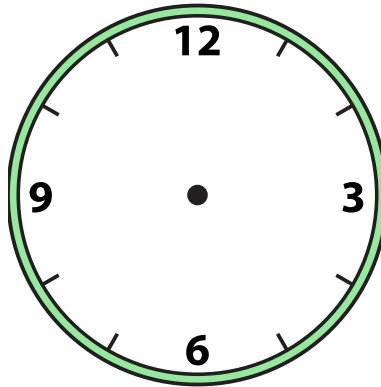
4)

5:30



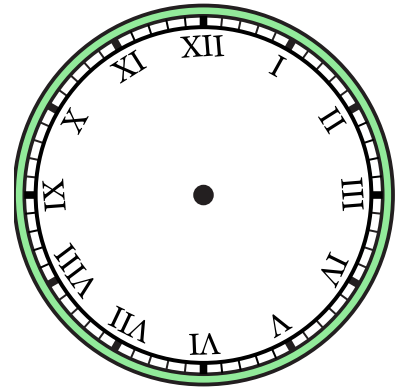
5)

7:30



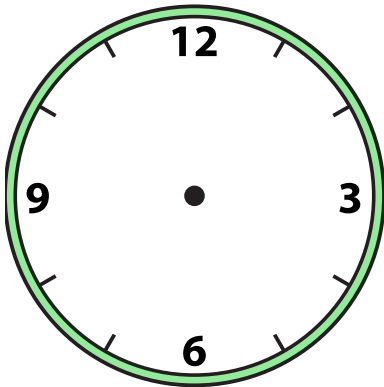
6)

5:00



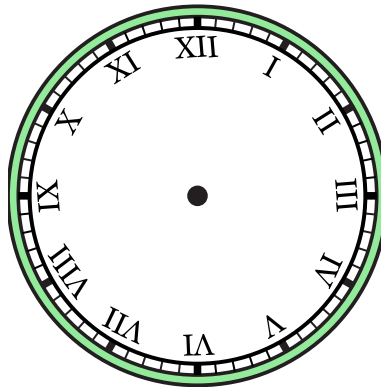
7)

10:00



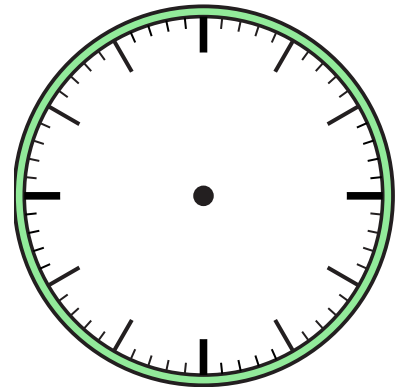
8)

3:00



9)

11:00

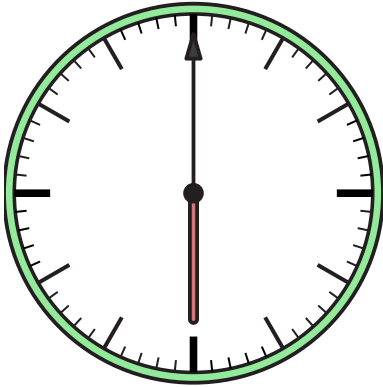




Disegna la lancetta delle ore e dei minuti sull'orologio in modo che rappresenti l'ora indicata.

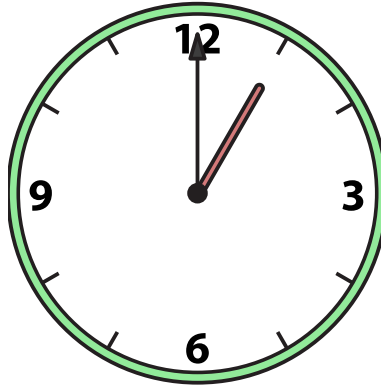
1)

6:00



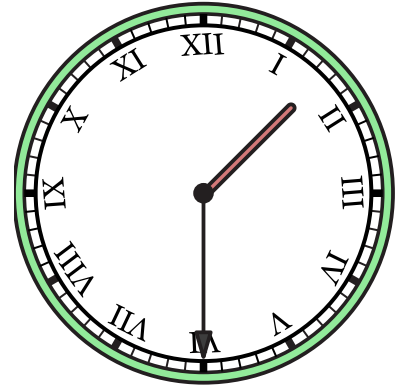
2)

1:00



3)

1:30



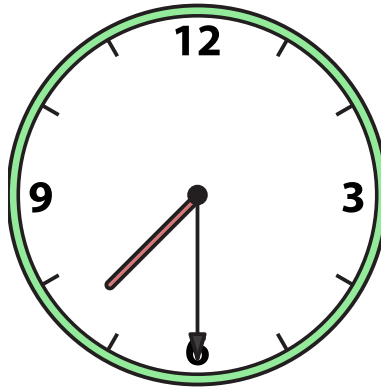
4)

5:30



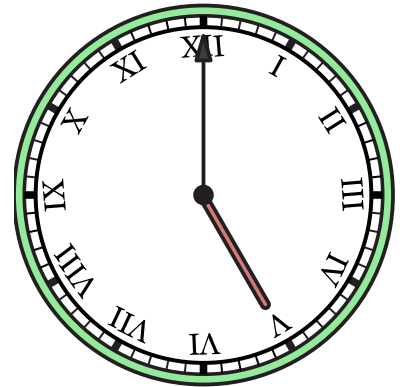
5)

7:30



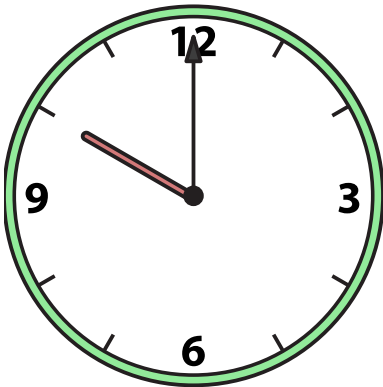
6)

5:00



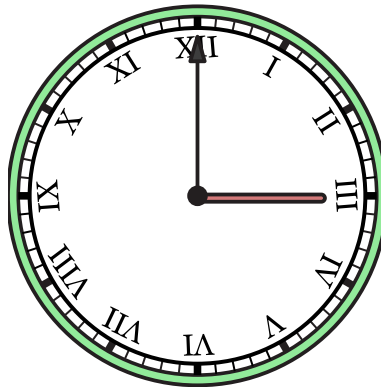
7)

10:00



8)

3:00



9)

11:00

