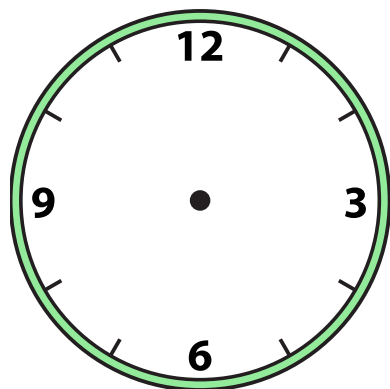




Disegna la lancetta delle ore e dei minuti sull'orologio in modo che rappresenti l'ora indicata.

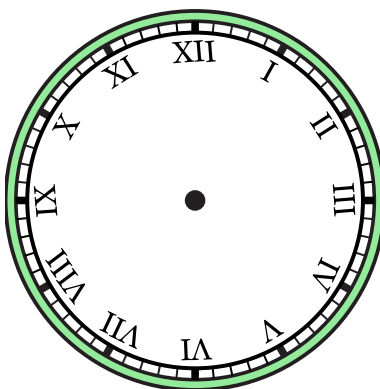
1)

9:00



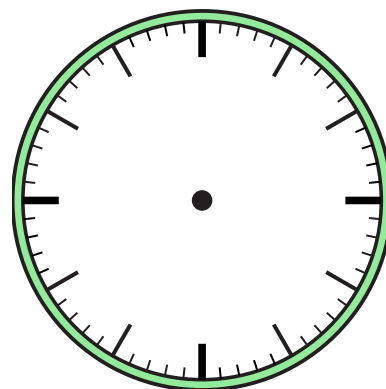
2)

7:30



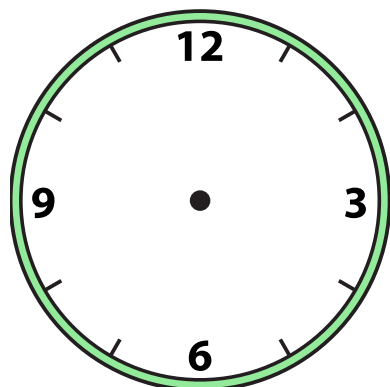
3)

8:30



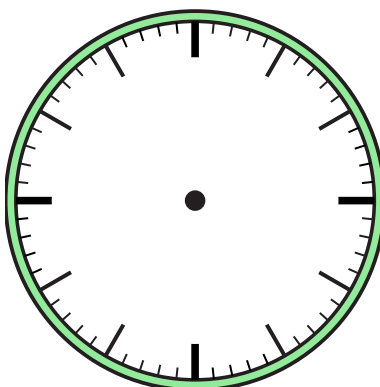
4)

4:30



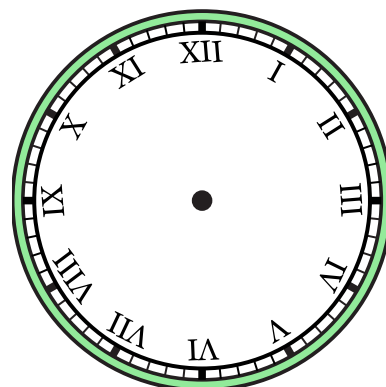
5)

10:00



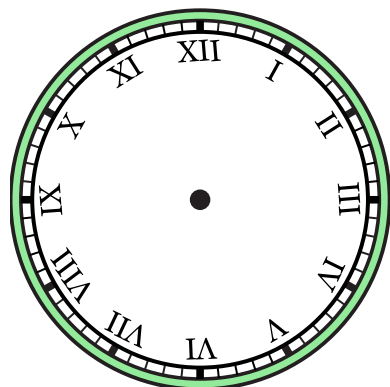
6)

4:00



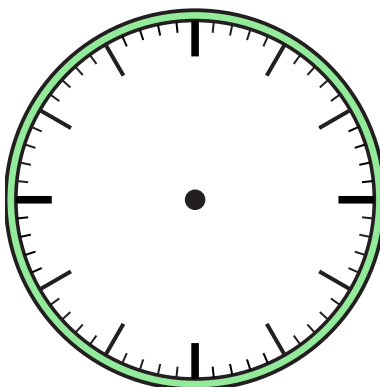
7)

3:00



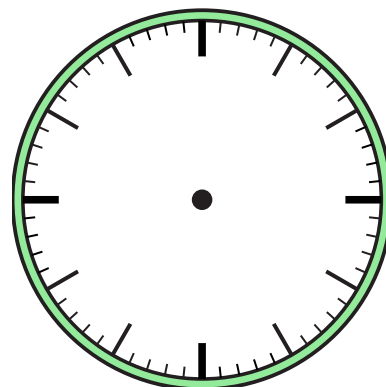
8)

11:30



9)

7:00

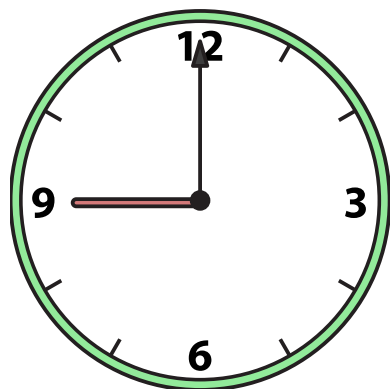




Disegna la lancetta delle ore e dei minuti sull'orologio in modo che rappresenti l'ora indicata.

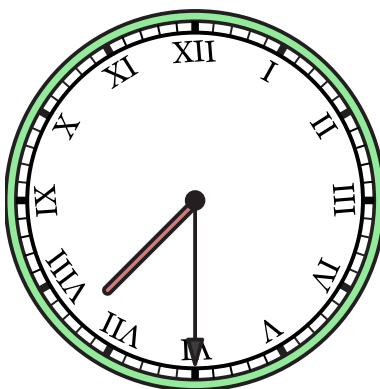
1)

9:00



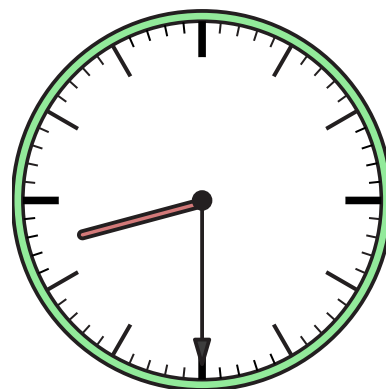
2)

7:30



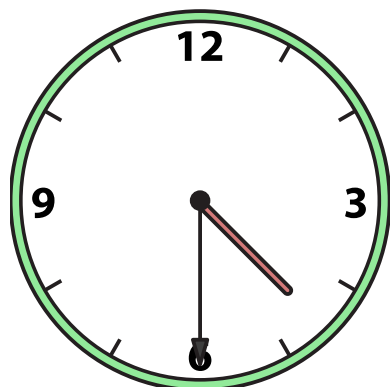
3)

8:30



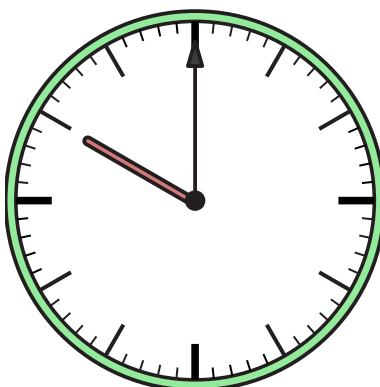
4)

4:30



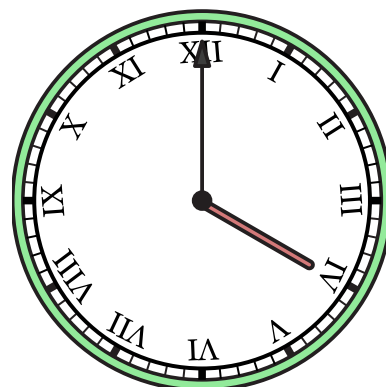
5)

10:00



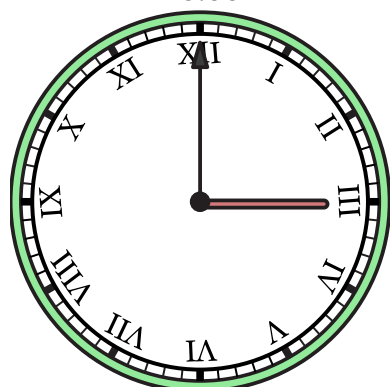
6)

4:00



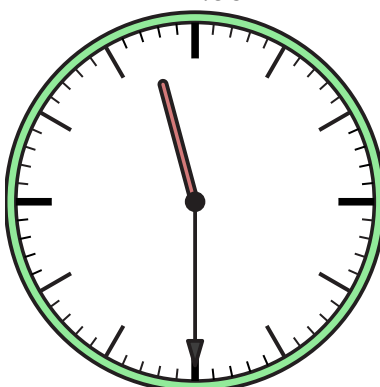
7)

3:00



8)

11:30



9)

7:00

