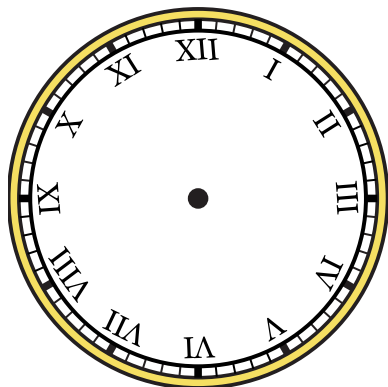




Disegna la lancetta delle ore e dei minuti sull'orologio in modo che rappresenti l'ora indicata.

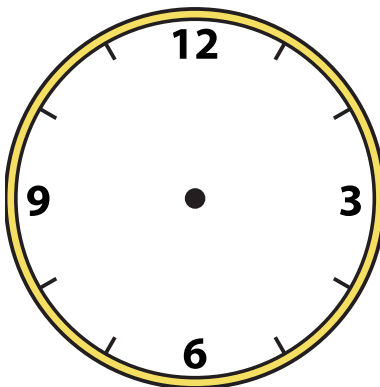
1)

8:30



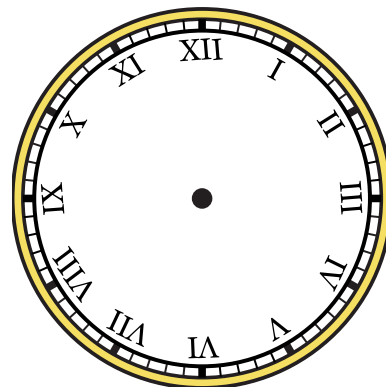
2)

11:00



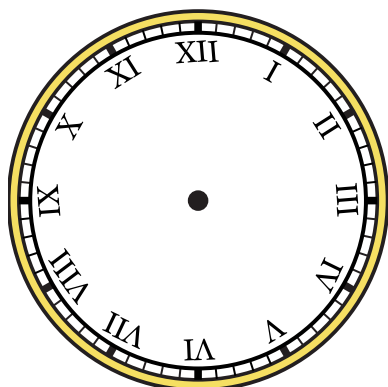
3)

9:15



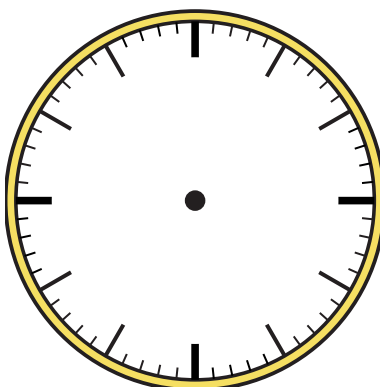
4)

11:15



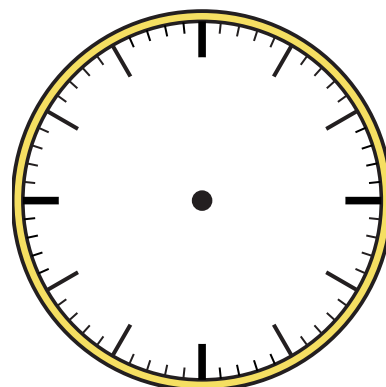
5)

2:00



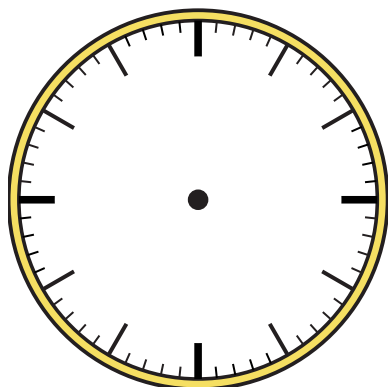
6)

1:30



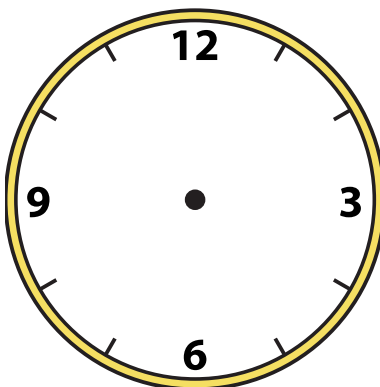
7)

6:45



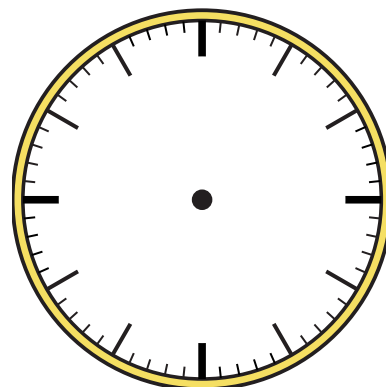
8)

12:30



9)

9:00

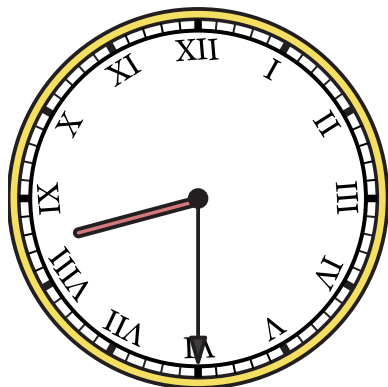




Disegna la lancetta delle ore e dei minuti sull'orologio in modo che rappresenti l'ora indicata.

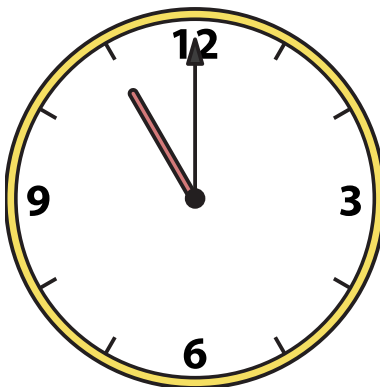
1)

8:30



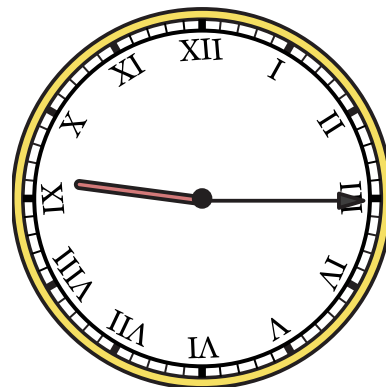
2)

11:00



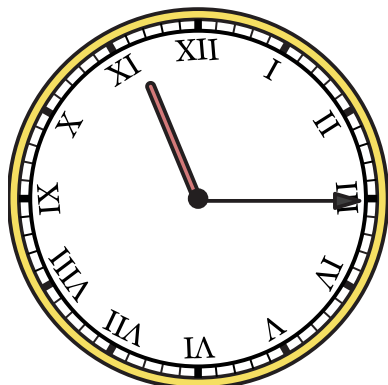
3)

9:15



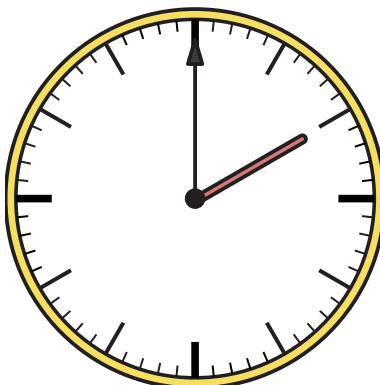
4)

11:15



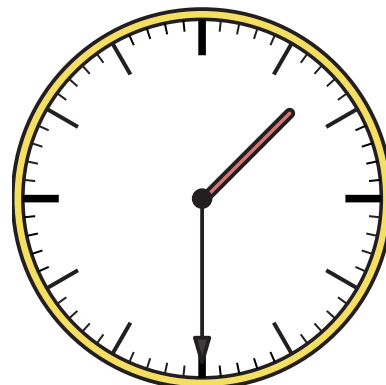
5)

2:00



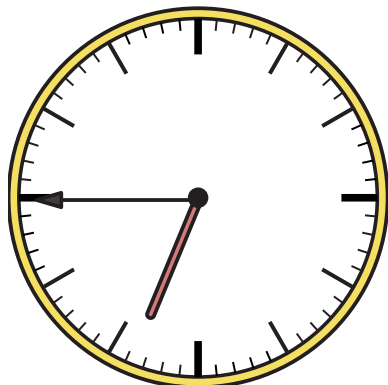
6)

1:30



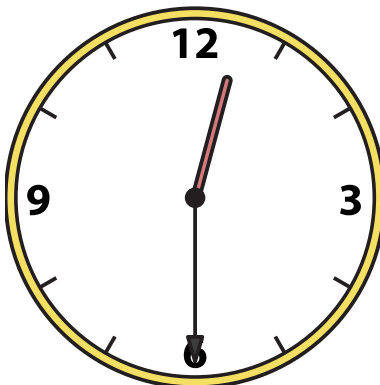
7)

6:45



8)

12:30



9)

9:00

