



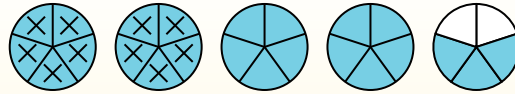
Usa i grafici per risolvere ogni problema.

$$4 \frac{3}{5} - 2 \frac{4}{5} = ?$$

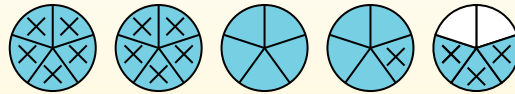
Para resolver un problema de resta de fracciones, una estrategia es sombrear primero la cantidad inicial ($4 \frac{3}{5}$)



Em seguida, marque os inteiros (2).



Finalmente, marque la fracción $\frac{4}{5}$.



Ahora podemos ver que $4 \frac{3}{5} - 2 \frac{4}{5} = 1 \frac{4}{5}$

Risposte

1. _____
2. _____
3. _____
4. _____
5. _____
6. _____
7. _____
8. _____
9. _____
10. _____

1) $7 \frac{2}{3} - 3 \frac{2}{3} =$

2) $7 \frac{4}{6} - 5 \frac{4}{6} =$

3) $5 \frac{6}{8} - 2 \frac{7}{8} =$

4) $4 \frac{2}{5} - 1 \frac{1}{5} =$

5) $7 \frac{6}{10} - 2 \frac{3}{10} =$

6) $7 \frac{2}{4} - 4 \frac{2}{4} =$

7) $6 \frac{2}{4} - 2 \frac{2}{4} =$

8) $6 \frac{5}{12} - 3 \frac{4}{12} =$

9) $6 \frac{1}{6} - 3 \frac{4}{6} =$

10) $6 \frac{5}{10} - 3 \frac{7}{10} =$



Usa i grafici per risolvere ogni problema.

$$4 \frac{3}{5} - 2 \frac{4}{5} = ?$$

Para resolver un problema de resta de fracciones, una estrategia es sombrear

primero la cantidad inicial ($4 \frac{3}{5}$)



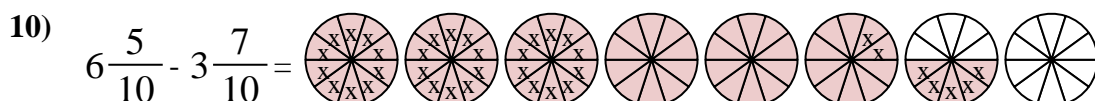
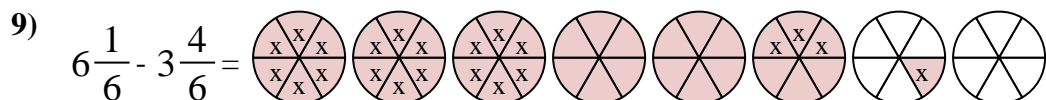
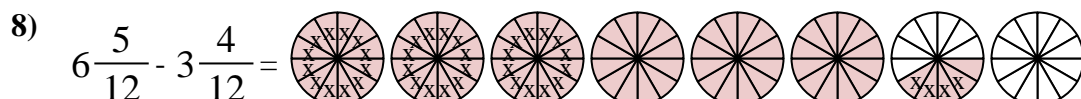
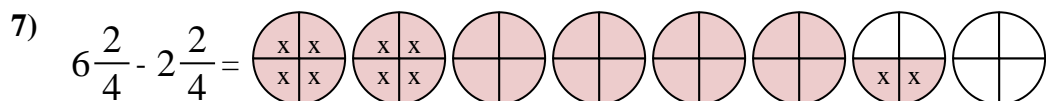
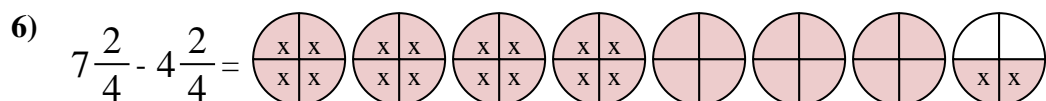
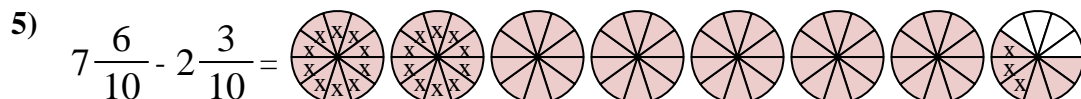
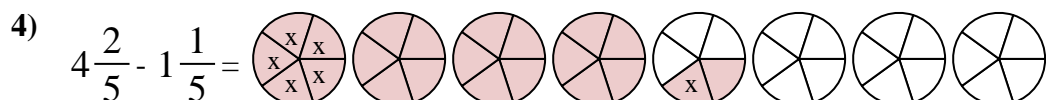
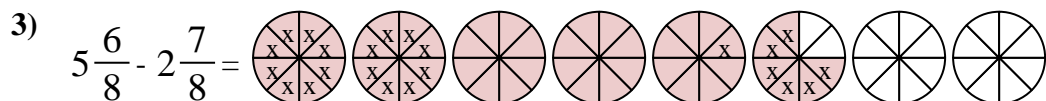
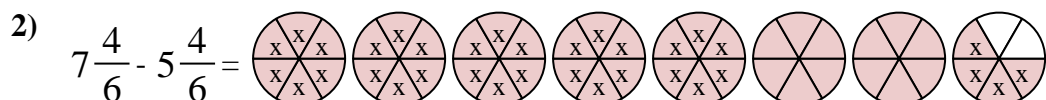
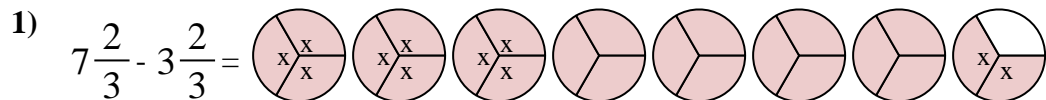
Em seguida, marque os inteiros (2).



Finalmente, marque la fracción $\frac{4}{5}$.



Ahora podemos ver que $4 \frac{3}{5} - 2 \frac{4}{5} = 1 \frac{4}{5}$



Risposte

1. $4 \frac{0}{3}$

2. $2 \frac{0}{6}$

3. $2 \frac{7}{8}$

4. $3 \frac{1}{5}$

5. $5 \frac{3}{10}$

6. $3 \frac{0}{4}$

7. $4 \frac{0}{4}$

8. $3 \frac{1}{12}$

9. $2 \frac{3}{6}$

10. $2 \frac{8}{10}$