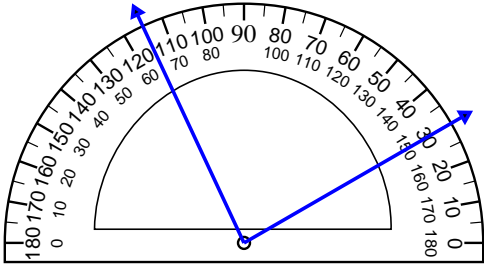


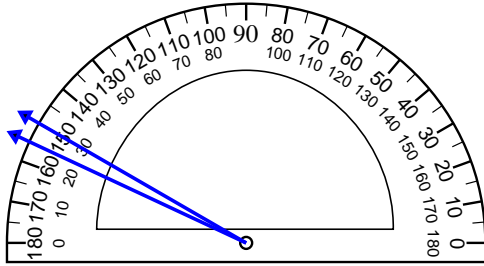


Usa il goniometro per determinare ogni angolo.

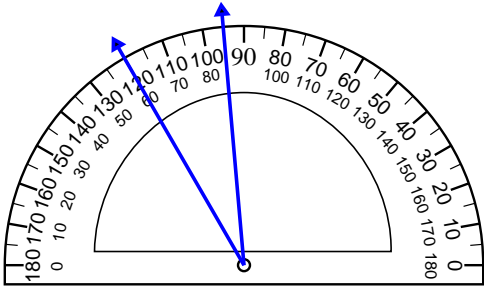
1)



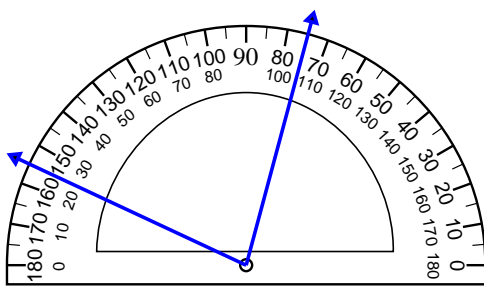
2)



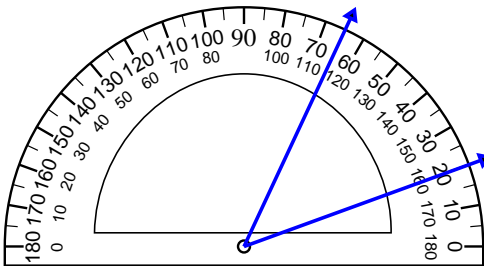
3)



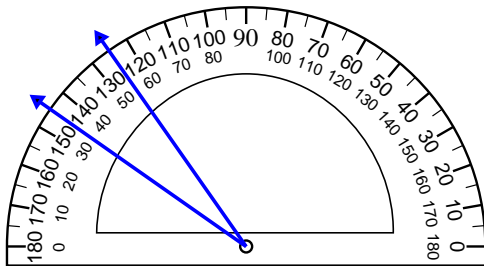
4)



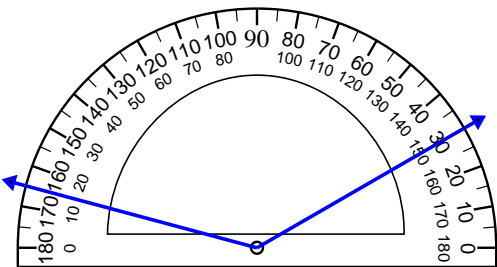
5)



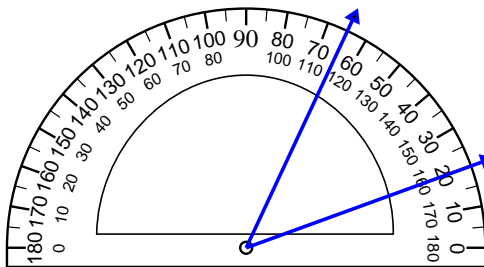
6)



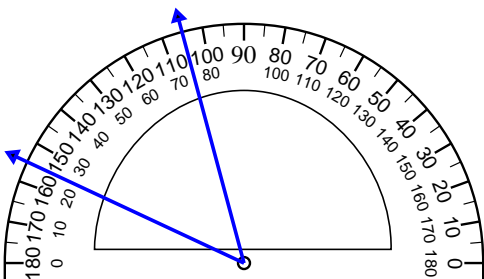
7)



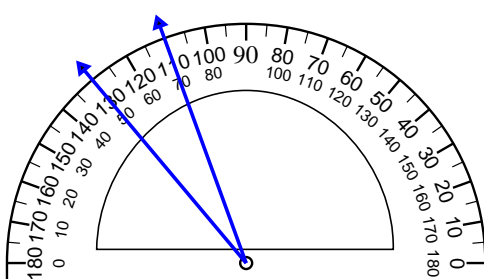
8)



9)



10)



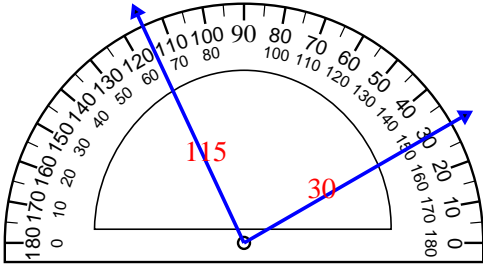
Risposte

1. _____
2. _____
3. _____
4. _____
5. _____
6. _____
7. _____
8. _____
9. _____
10. _____

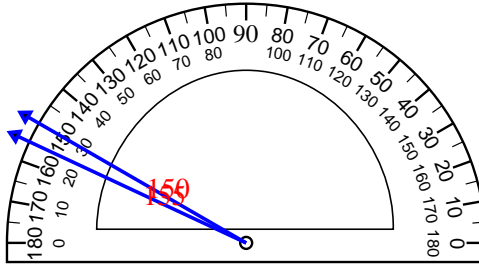


Usa il goniometro per determinare ogni angolo.

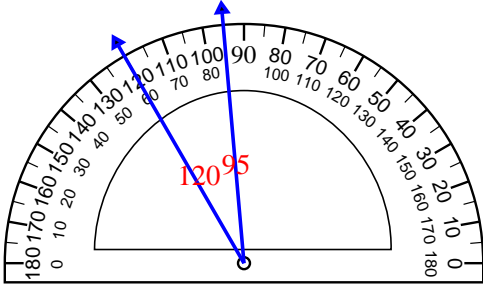
1)



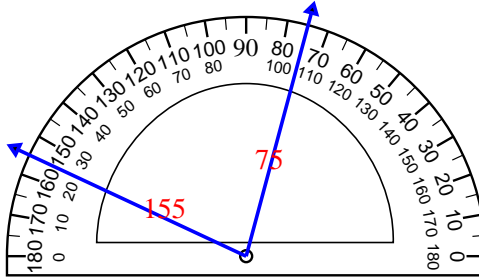
2)



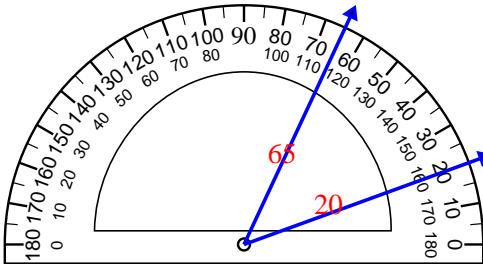
3)



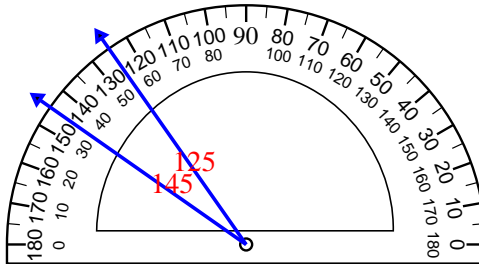
4)



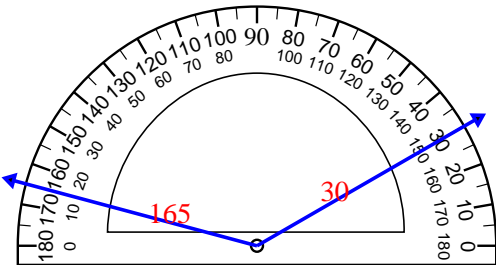
5)



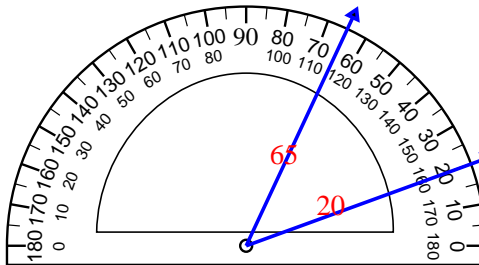
6)



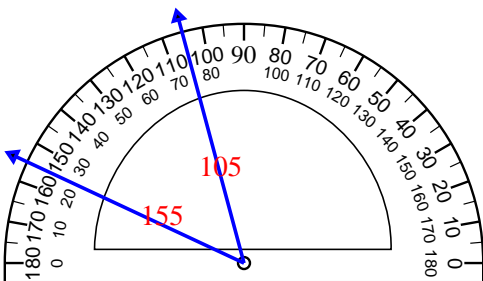
7)



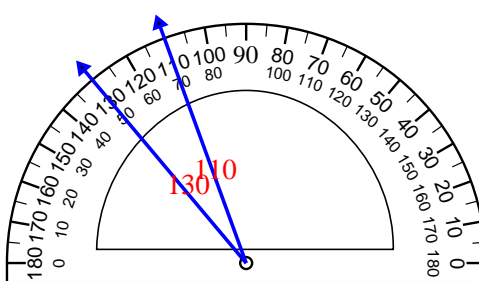
8)



9)



10)



Risposte

1. 85°

2. 5°

3. 25°

4. 80°

5. 45°

6. 20°

7. 135°

8. 45°

9. 50°

10. 20°