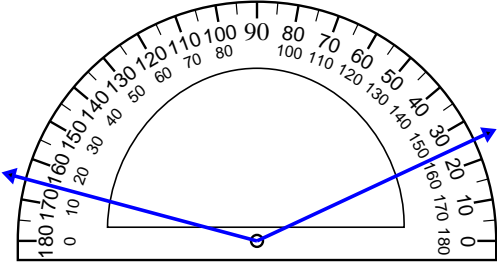


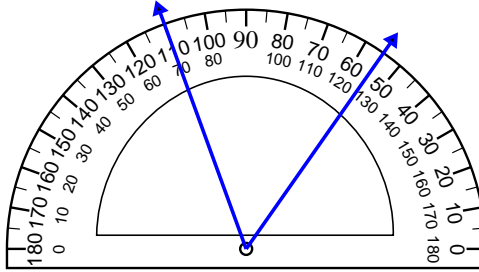


Usa il goniometro per determinare ogni angolo.

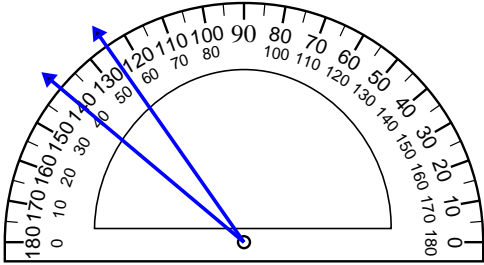
1)



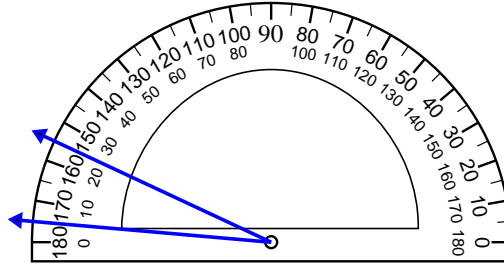
2)



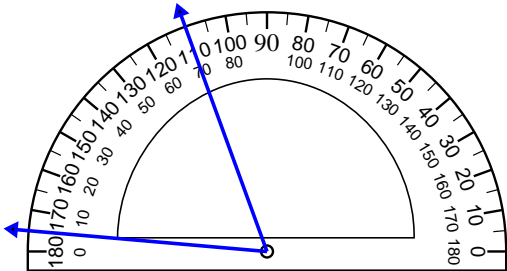
3)



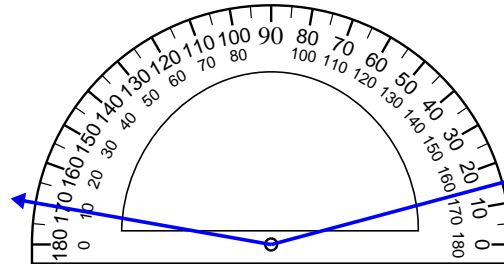
4)



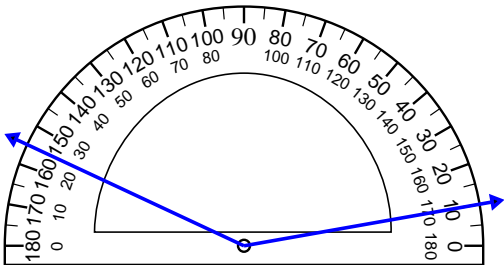
5)



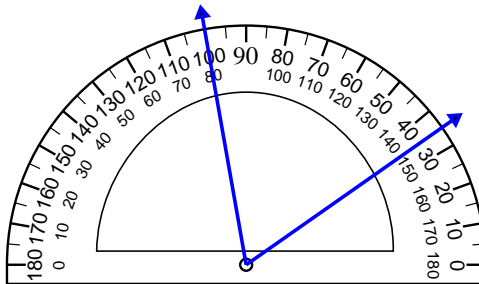
6)



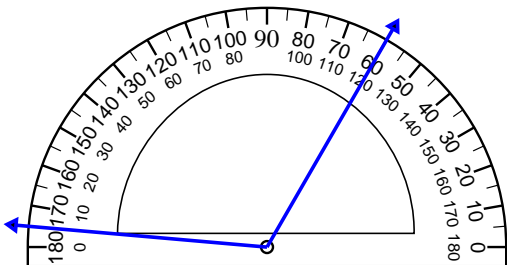
7)



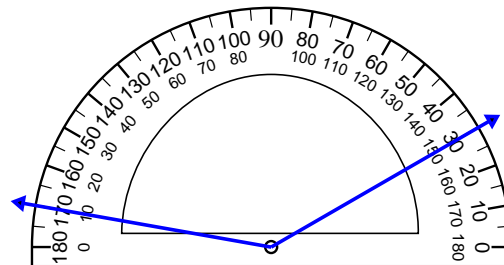
8)



9)



10)



Risposte

1. _____

2. _____

3. _____

4. _____

5. _____

6. _____

7. _____

8. _____

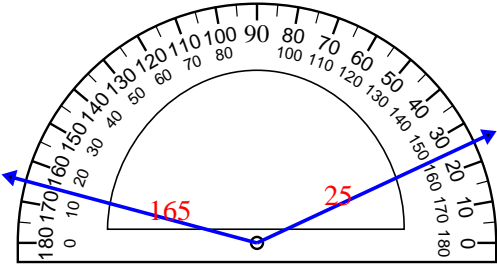
9. _____

10. _____

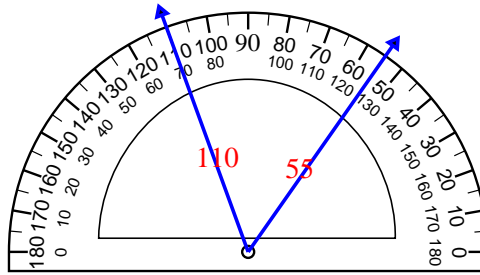


Usa il goniometro per determinare ogni angolo.

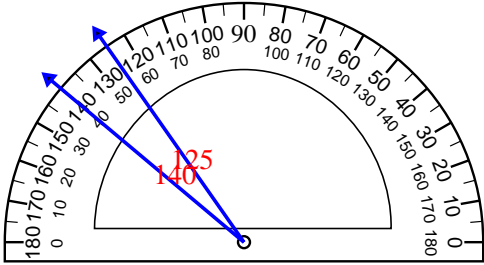
1)



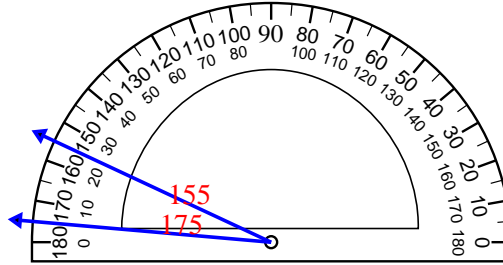
2)



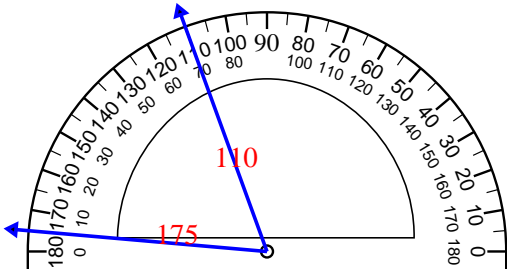
3)



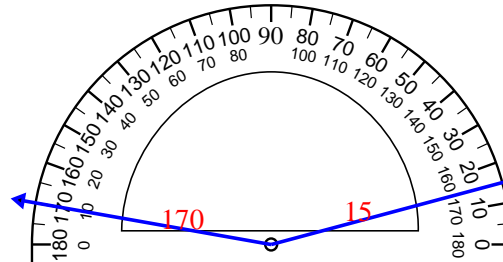
4)



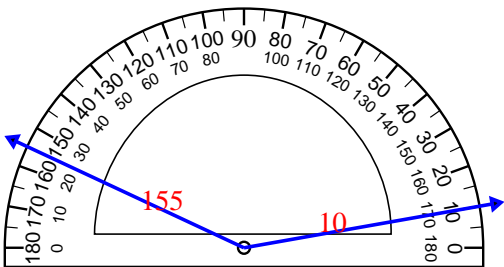
5)



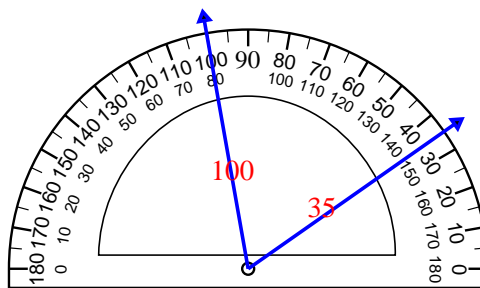
6)



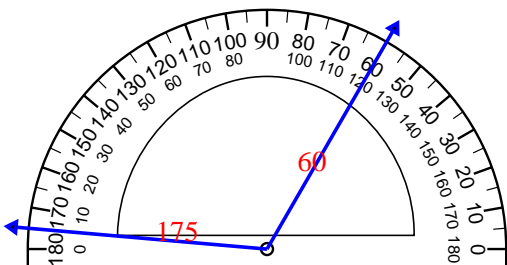
7)



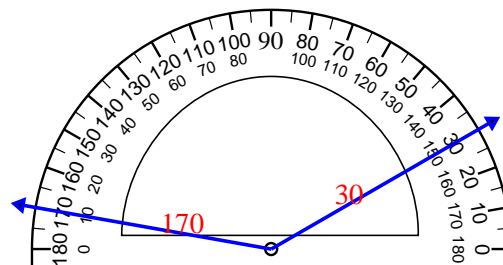
8)



9)



10)



Risposte

1. 140°
2. 55°
3. 15°
4. 20°
5. 65°
6. 155°
7. 145°
8. 65°
9. 115°
10. 140°