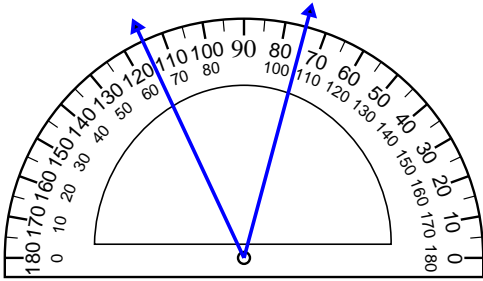


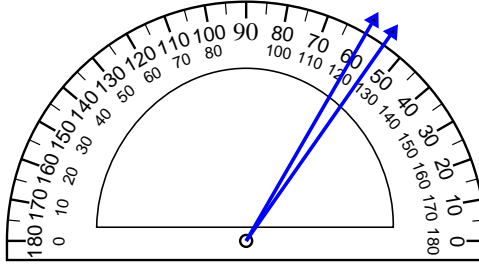


Usa il goniometro per determinare ogni angolo.

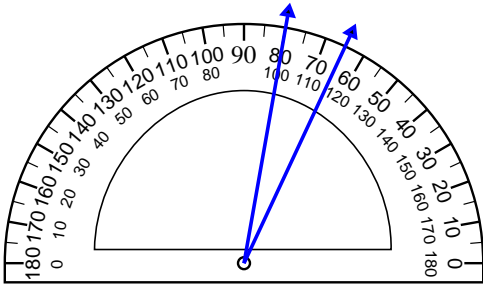
1)



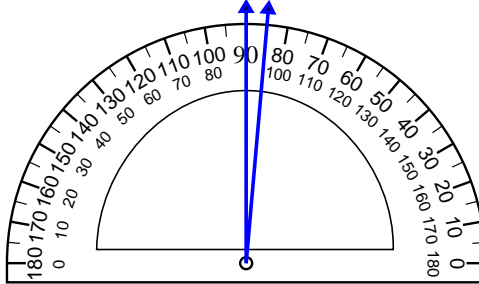
2)



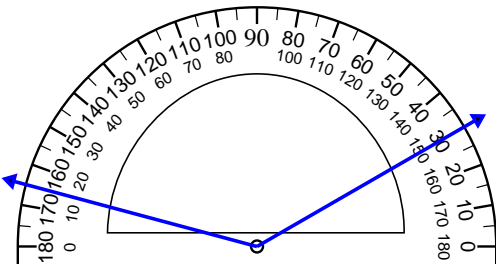
3)



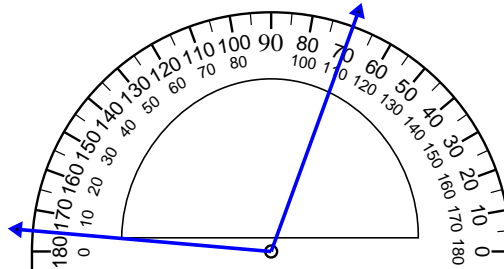
4)



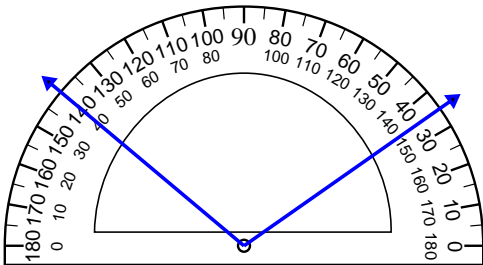
5)



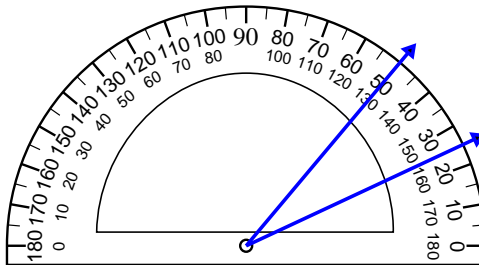
6)



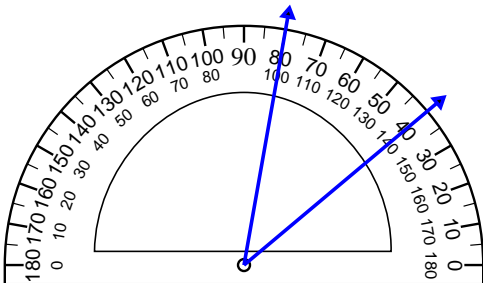
7)



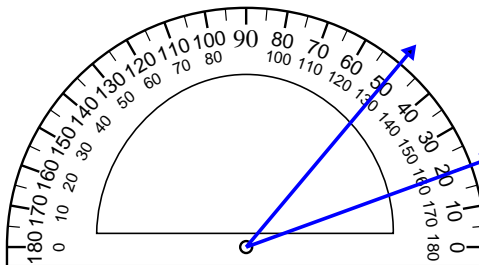
8)



9)



10)



Risposte

1. _____

2. _____

3. _____

4. _____

5. _____

6. _____

7. _____

8. _____

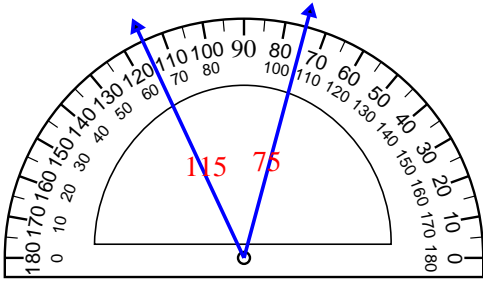
9. _____

10. _____

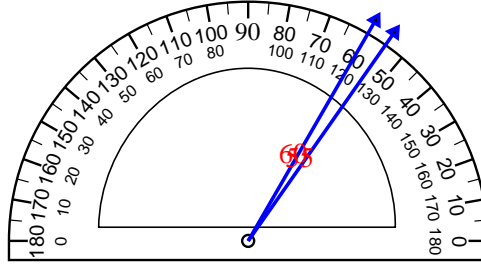


Usa il goniometro per determinare ogni angolo.

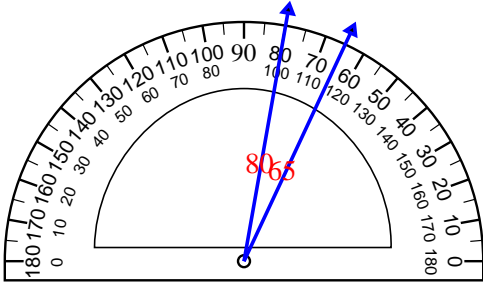
1)



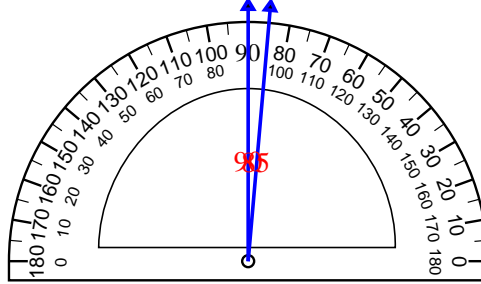
2)



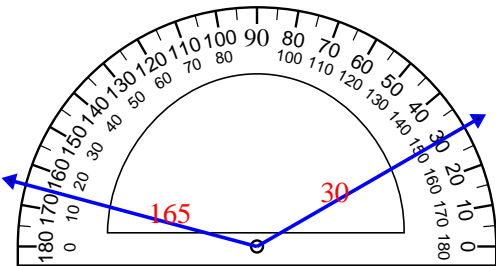
3)



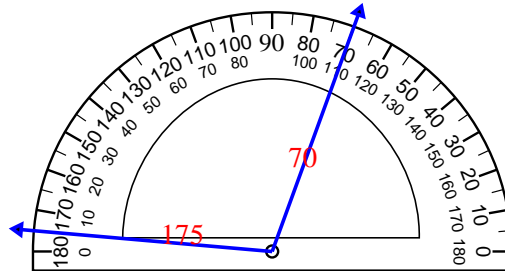
4)



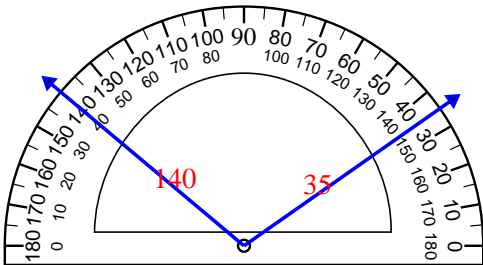
5)



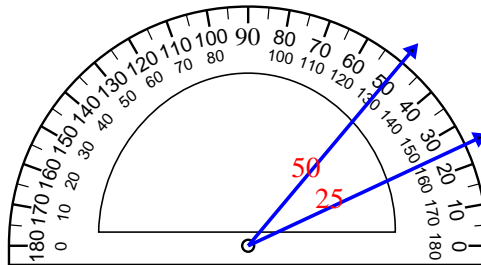
6)



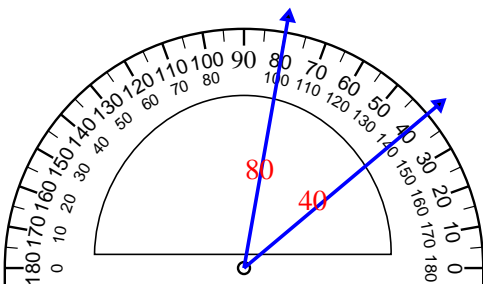
7)



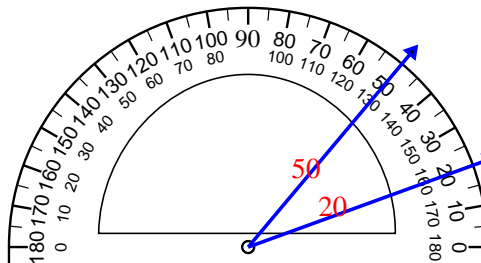
8)



9)



10)



Risposte

1. 40°

2. 5°

3. 15°

4. 5°

5. 135°

6. 105°

7. 105°

8. 25°

9. 40°

10. 30°