



Determina quale lettera rappresenta il peso corretto dell'oggetto

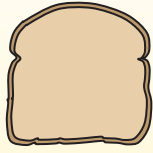
Risposte

Onza (oz)

Libra (lb)

Una onza es aproximadamente el peso de una rebanada de pan.

Una libra é mais ou menos o peso de uma lata de vegetais.



Recordar:
Hay 16 onzas en 1 libra.

1. _____
2. _____
3. _____
4. _____
5. _____
6. _____
7. _____
8. _____
9. _____

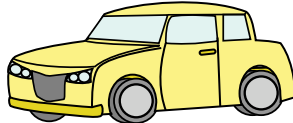
1)



Fornello

- A. 30 Libbre
- B. 130 Libbre
- C. 160 once
- D. 16 once

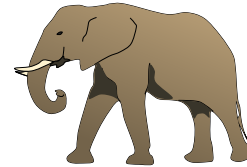
2)



Macchina

- A. 2000 Libbre
- B. 5200 once
- C. 500 Libbre
- D. 15 once

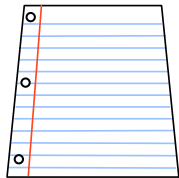
3)



Elefante

- A. 15 once
- B. 4000 once
- C. 11000 Libbre
- D. 300 Libbre

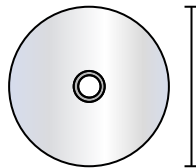
4)



Carta per taccuini

- A. 3 once
- B. 10 once
- C. 2 Libbre
- D. 0.1 once

5)



DVD

- A. 0.6 Libbre
- B. 1 Libbre
- C. 2.5 Libbre
- D. 16 once

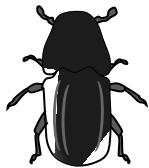
6)



Popcorn

- A. 0.3 Libbre
- B. 0.04 once
- C. 2 Libbre
- D. 10 once

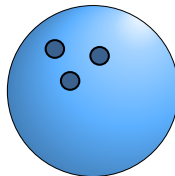
7)



Scarafaggio

- A. 8 once
- B. 16 once
- C. 4 Libbre
- D. 0.04 once

8)



Palla da bowling

- A. 198 Libbre
- B. 13 Libbre
- C. 7 once
- D. 110 Libbre

9)

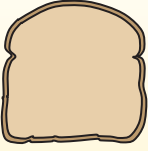


Cucchiaio

- A. 0.11 once
- B. 10 Libbre
- C. 7 Libbre
- D. 0.8 once

**Determina quale lettera rappresenta il peso corretto dell'oggetto****Onza (oz)**

Una onza es aproximadamente el peso de una rebanada de pan.

**Libra (lb)**

Una libra é mais ou menos o peso de uma lata de vegetais.

**Recordar:**
Hay 16 onzas en 1 libra.**Risposte**

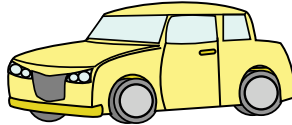
1)



Fornello

- A. 30 Libbre
- B. 130 Libbre
- C. 160 once
- D. 16 once

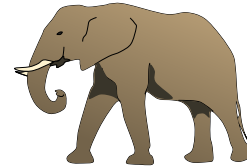
2)



Macchina

- A. 2000 Libbre
- B. 5200 once
- C. 500 Libbre
- D. 15 once

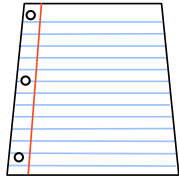
3)



Elefante

- A. 15 once
- B. 4000 once
- C. 11000 Libbre
- D. 300 Libbre

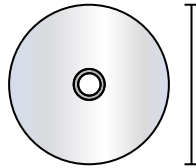
4)



Carta per taccuini

- A. 3 once
- B. 10 once
- C. 2 Libbre
- D. 0.1 once

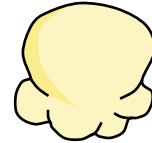
5)



DVD

- A. 0.6 Libbre
- B. 1 Libbre
- C. 2.5 Libbre
- D. 16 once

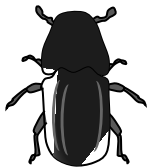
6)



Popcorn

- A. 0.3 Libbre
- B. 0.04 once
- C. 2 Libbre
- D. 10 once

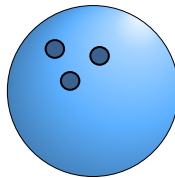
7)



Scarafaggio

- A. 8 once
- B. 16 once
- C. 4 Libbre
- D. 0.04 once

8)



Palla da bowling

- A. 198 Libbre
- B. 13 Libbre
- C. 7 once
- D. 110 Libbre

9)



Cucchiaio

- A. 0.11 once
- B. 10 Libbre
- C. 7 Libbre
- D. 0.8 once

1. **B**
2. **A**
3. **C**
4. **D**
5. **A**
6. **B**
7. **D**
8. **B**
9. **D**