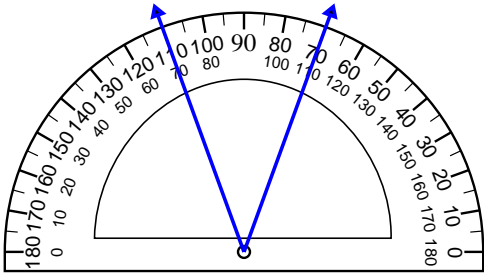


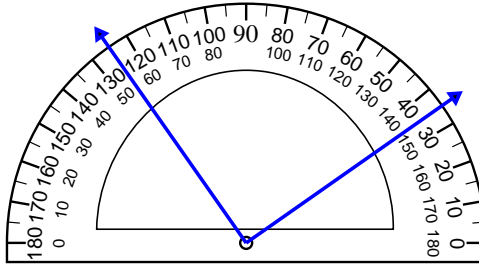


Usa il goniometro per determinare ogni angolo.

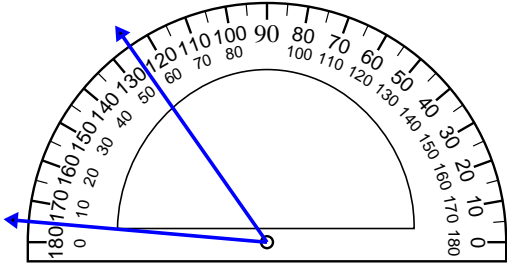
1)



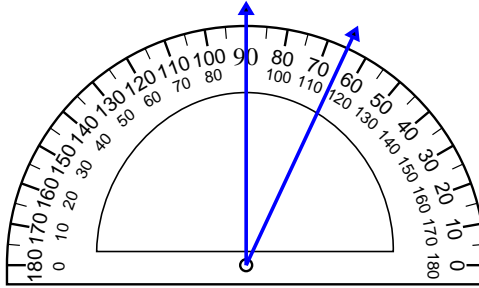
2)



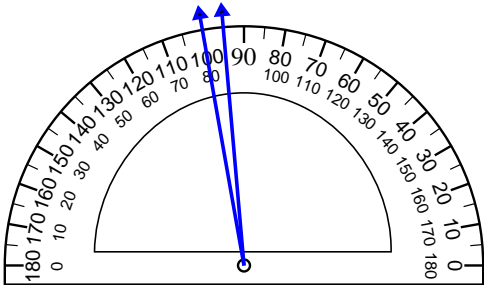
3)



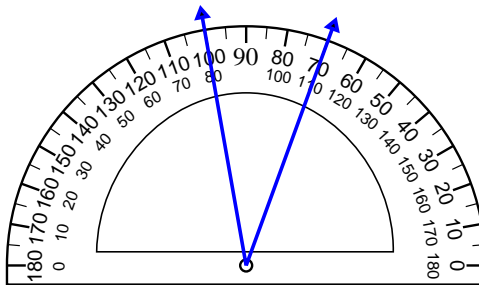
4)



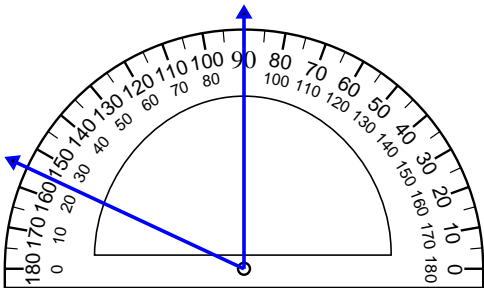
5)



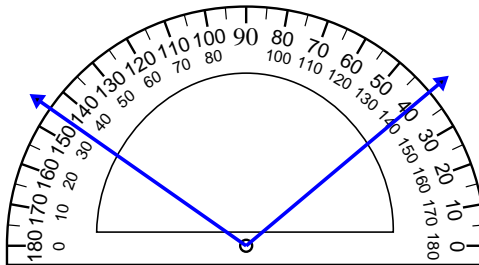
6)



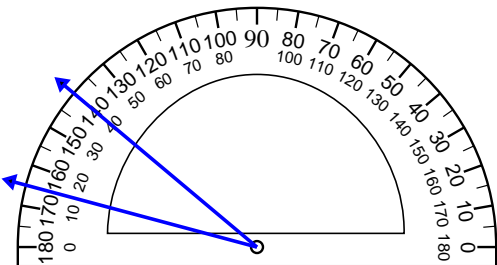
7)



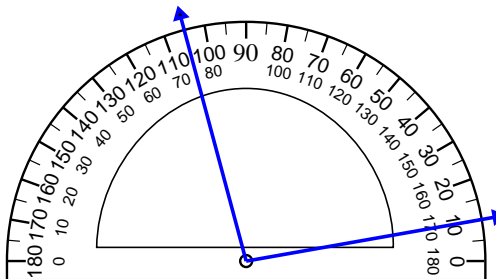
8)



9)



10)

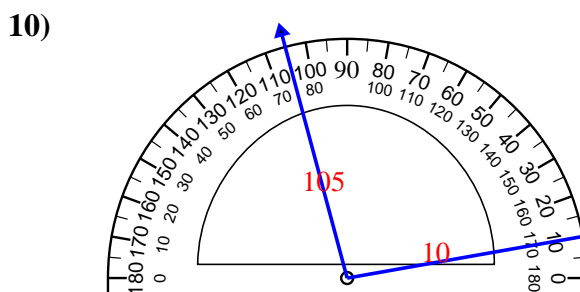
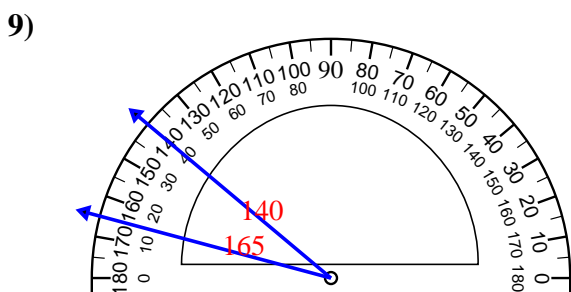
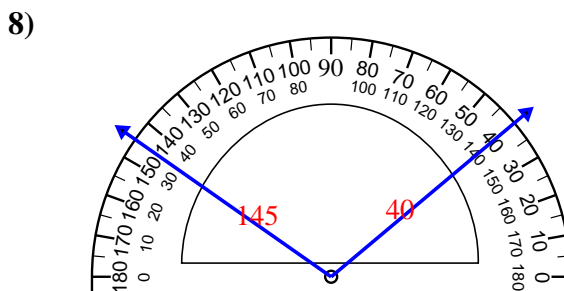
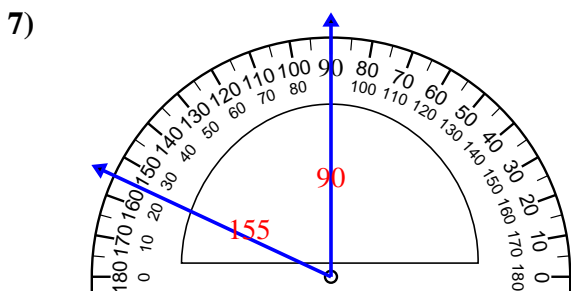
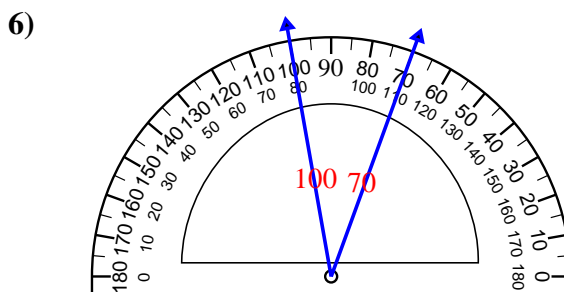
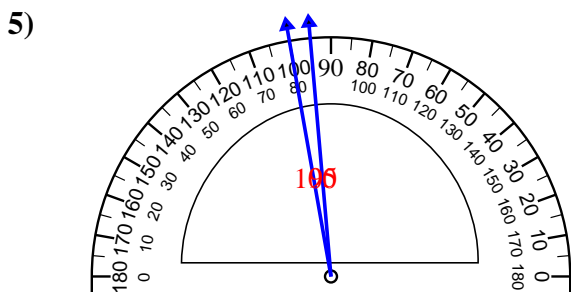
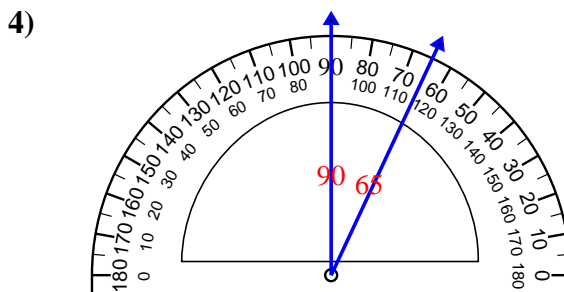
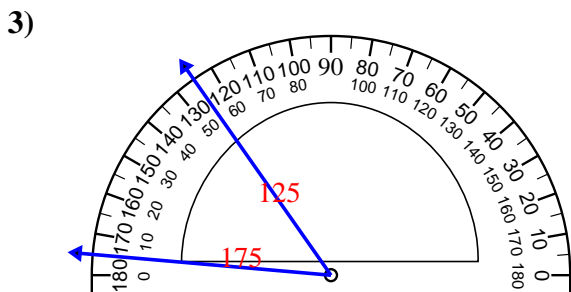
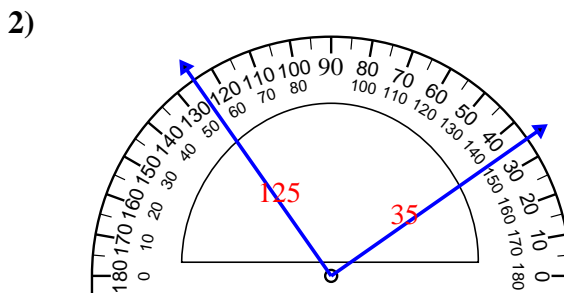
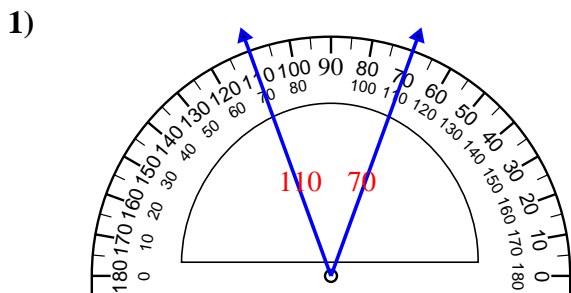


Risposte

1. _____
2. _____
3. _____
4. _____
5. _____
6. _____
7. _____
8. _____
9. _____
10. _____



Usa il goniometro per determinare ogni angolo.



Risposte

1. 40°
2. 90°
3. 50°
4. 25°
5. 5°
6. 30°
7. 65°
8. 105°
9. 25°
10. 95°