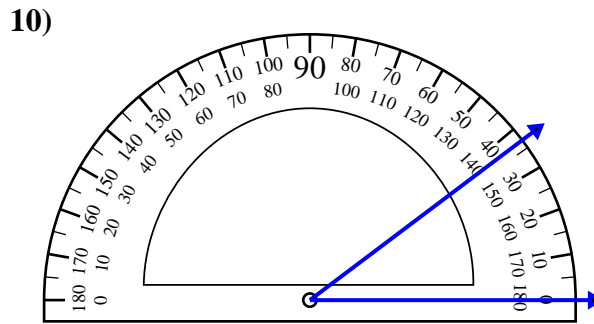
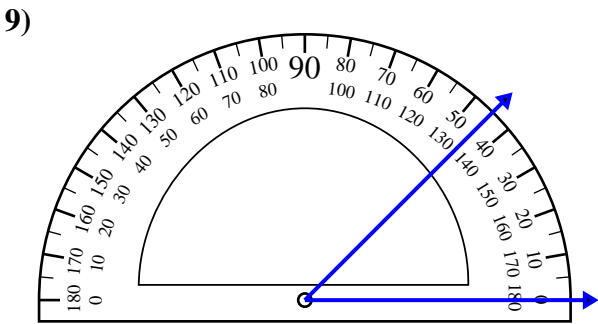
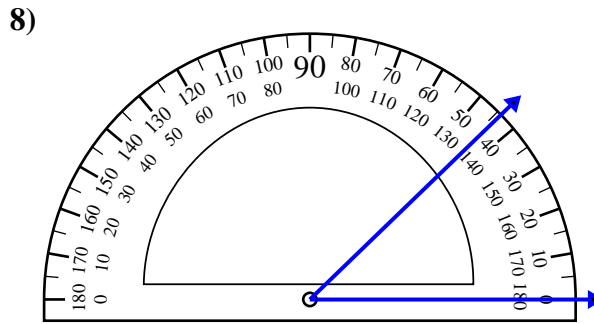
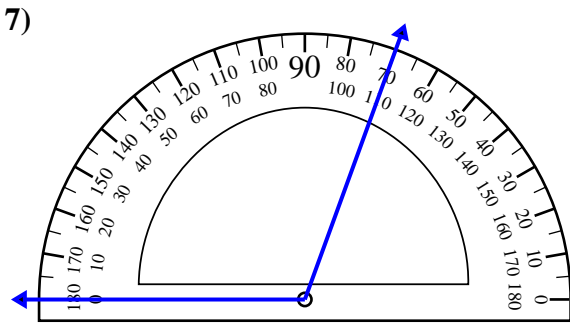
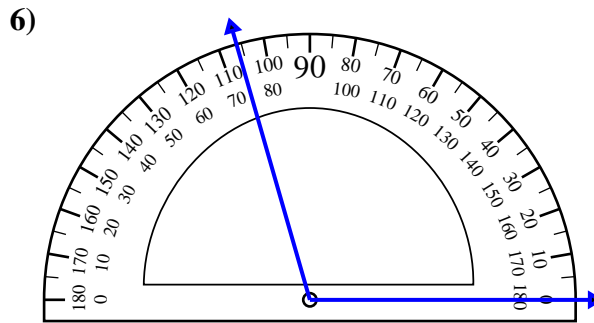
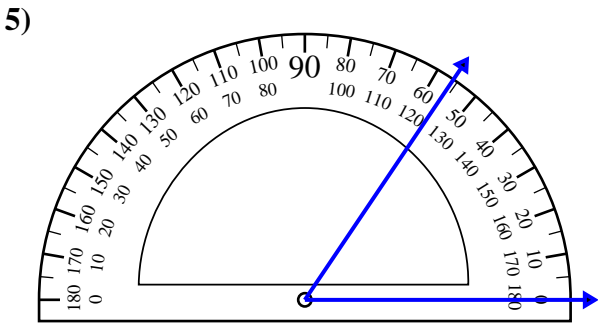
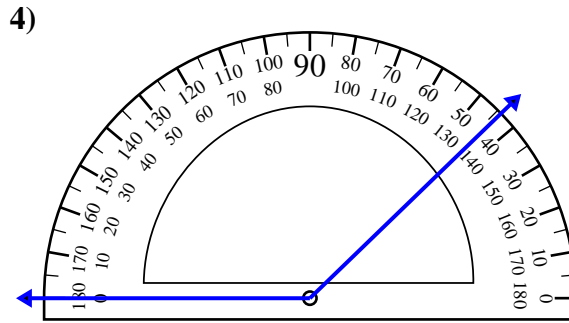
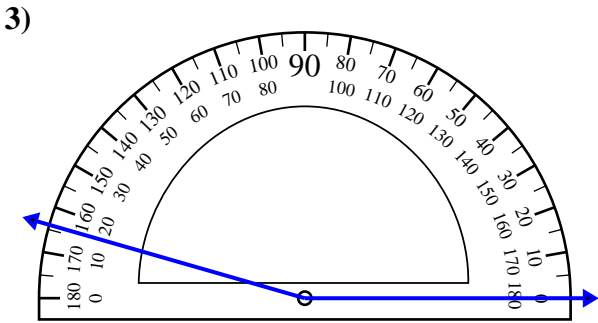
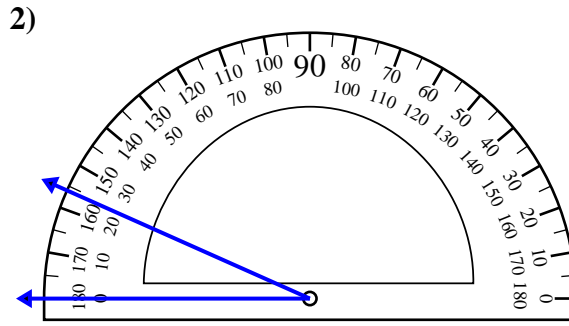
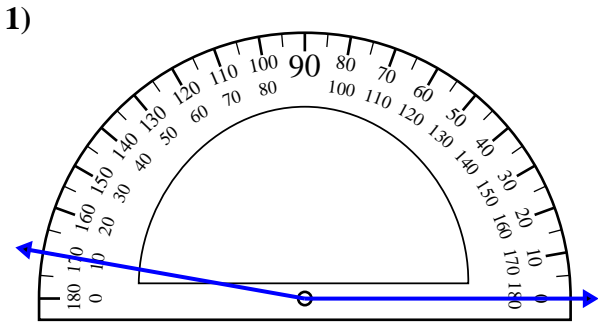




Usa il goniometro per determinare ogni angolo.

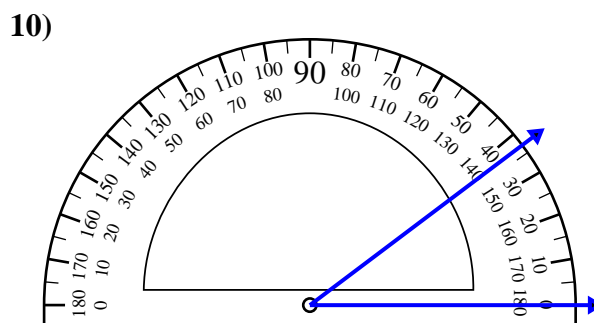
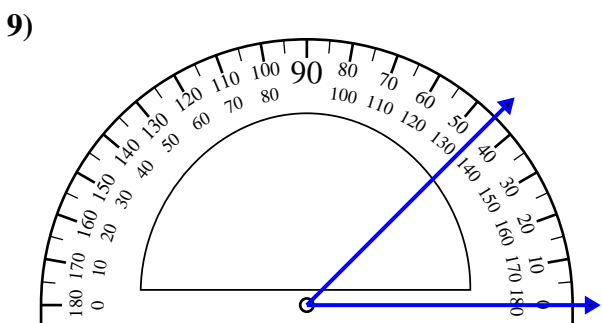
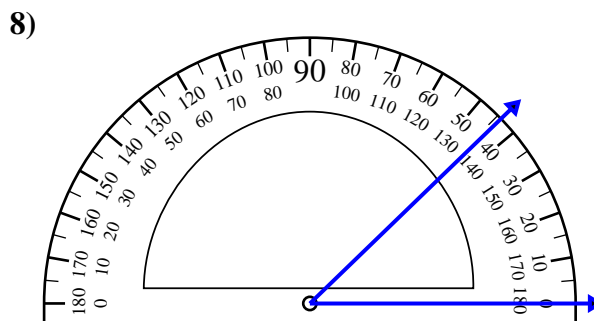
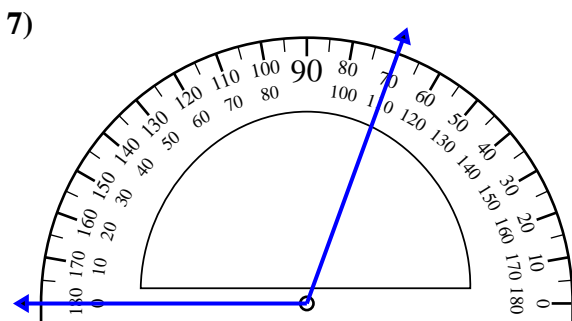
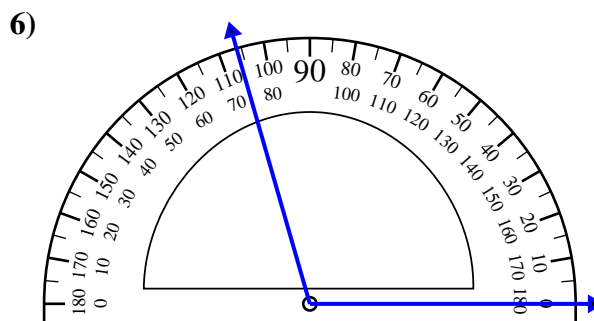
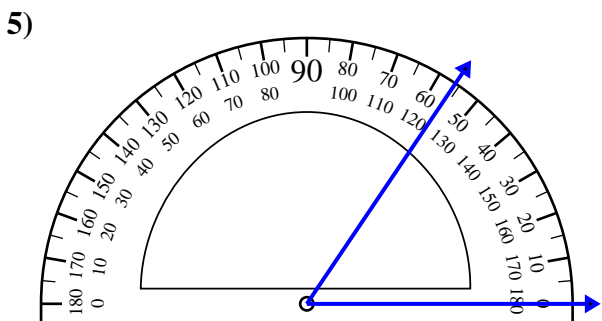
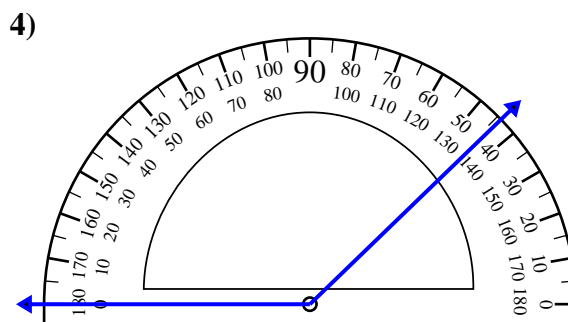
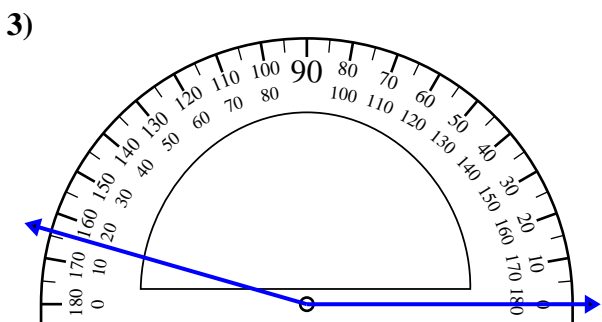
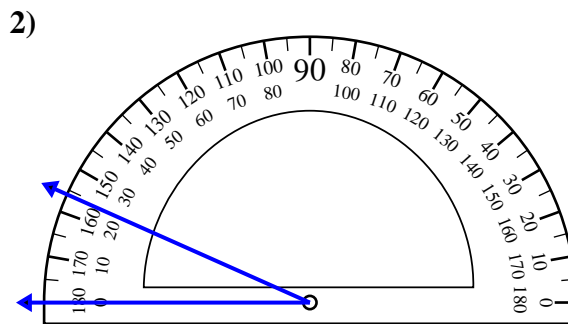
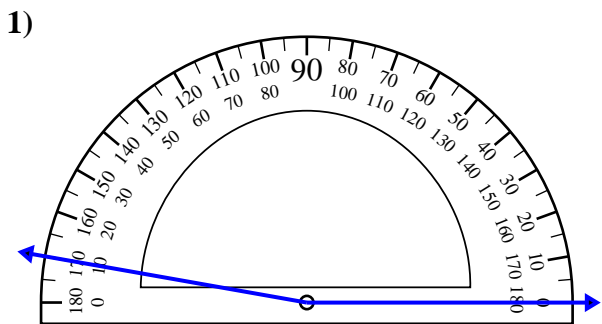


Risposte

1. _____
2. _____
3. _____
4. _____
5. _____
6. _____
7. _____
8. _____
9. _____
10. _____



Usa il goniometro per determinare ogni angolo.

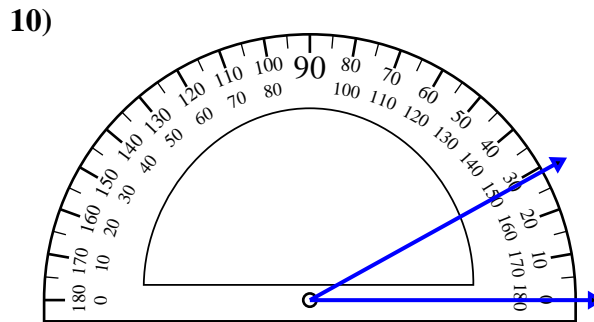
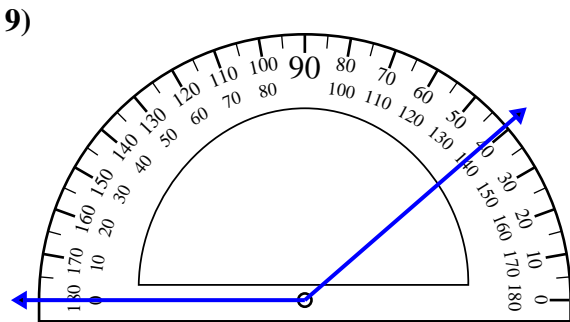
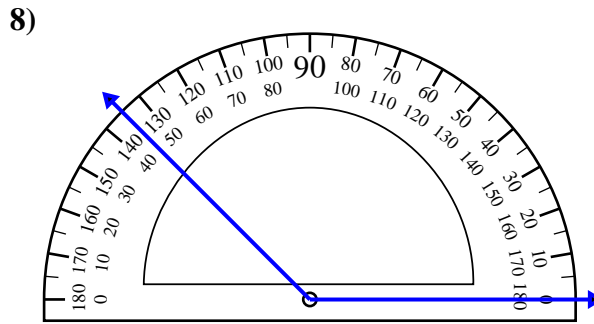
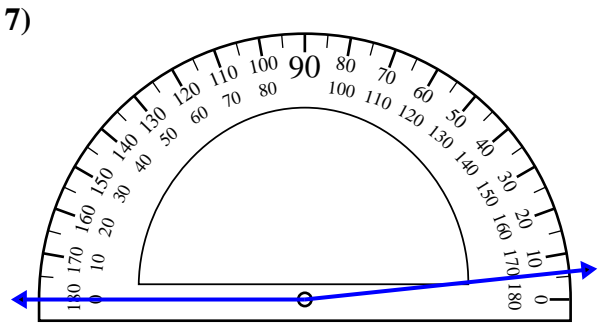
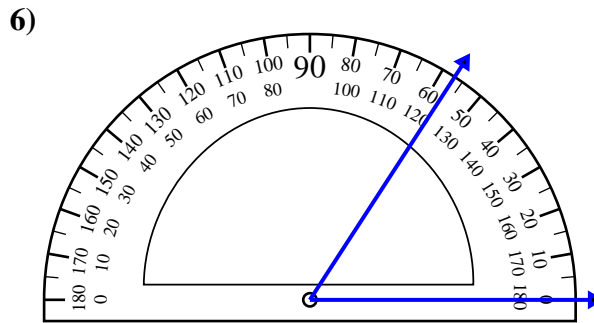
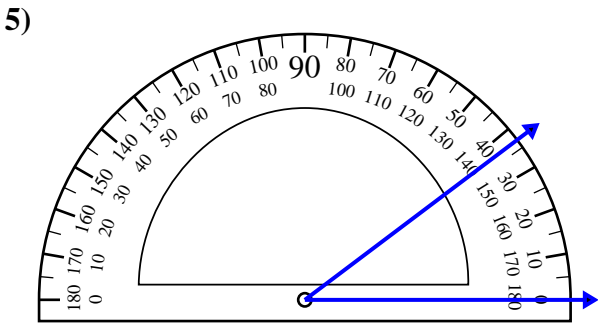
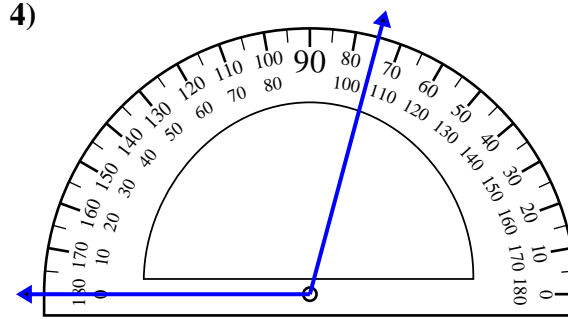
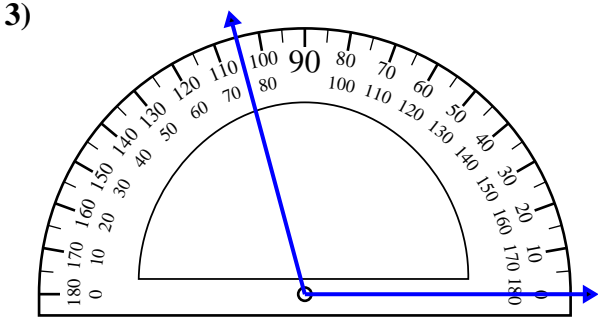
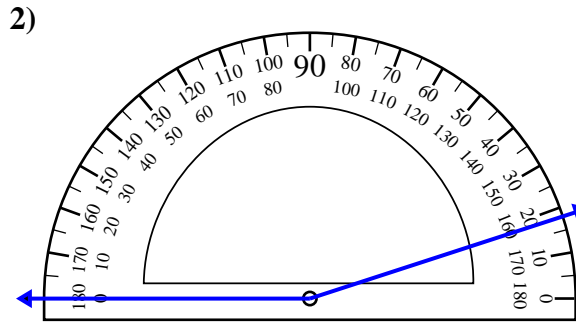
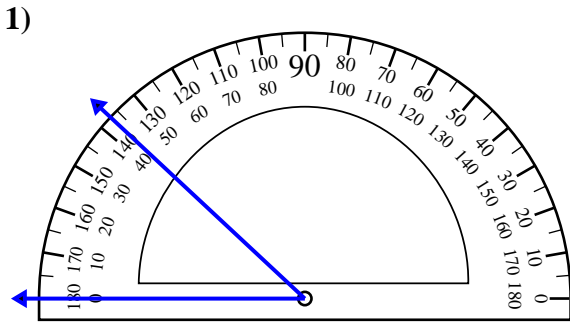


Risposte

1. 170°
2. 24°
3. 164°
4. 136°
5. 56°
6. 106°
7. 110°
8. 44°
9. 45°
10. 37°



Usa il goniometro per determinare ogni angolo.

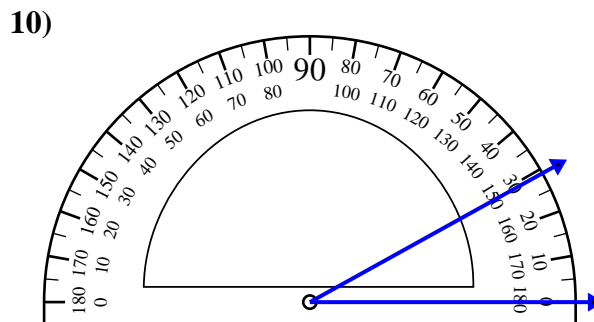
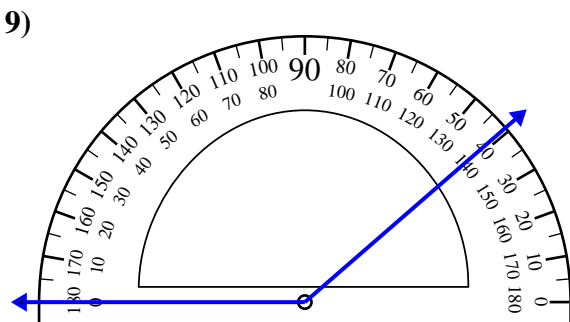
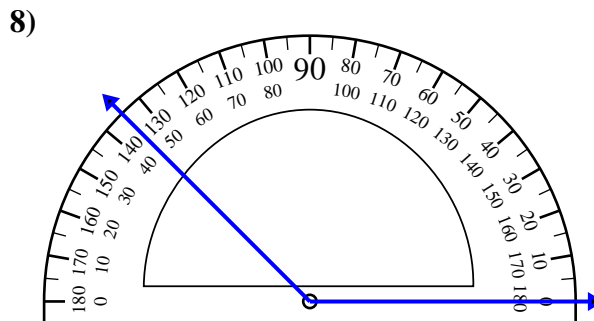
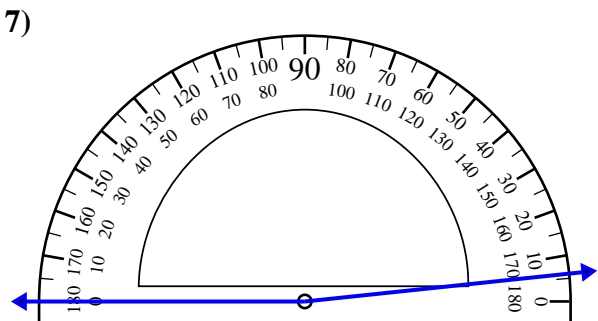
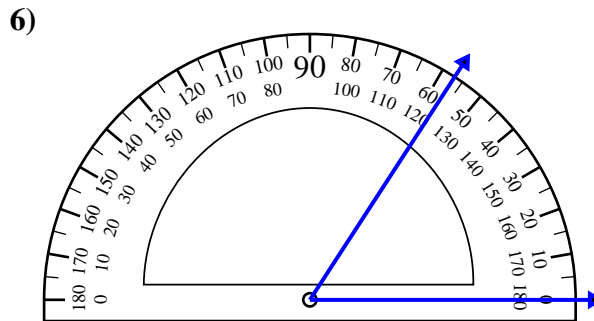
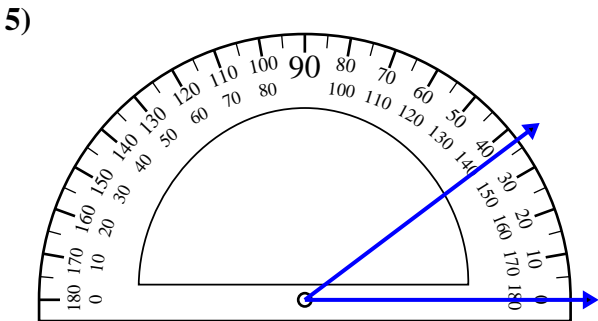
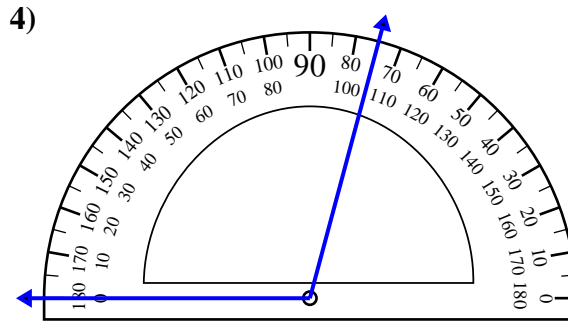
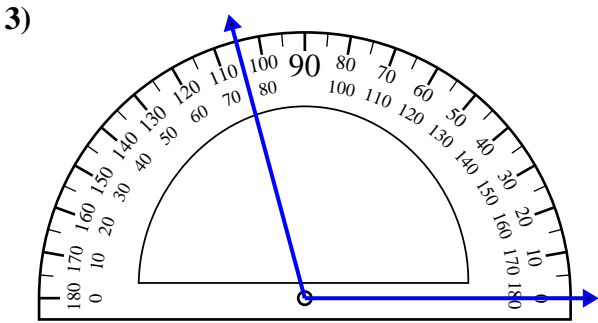
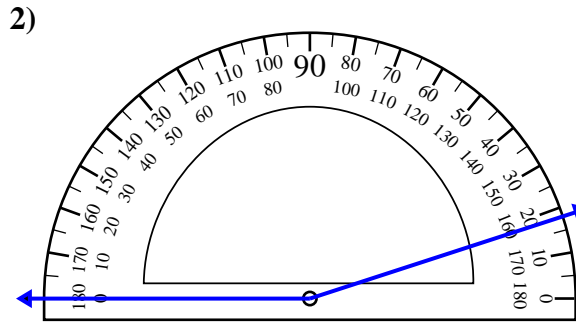
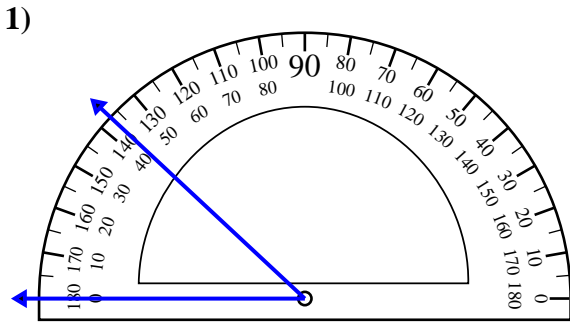


Risposte

1. _____
2. _____
3. _____
4. _____
5. _____
6. _____
7. _____
8. _____
9. _____
10. _____



Usa il goniometro per determinare ogni angolo.

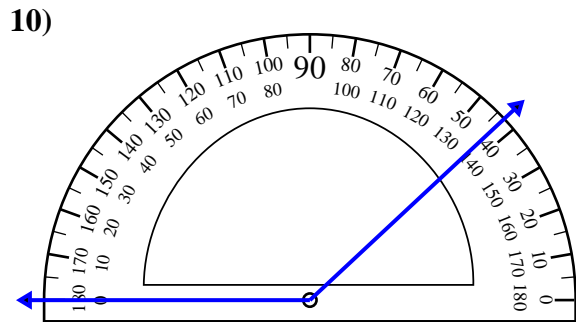
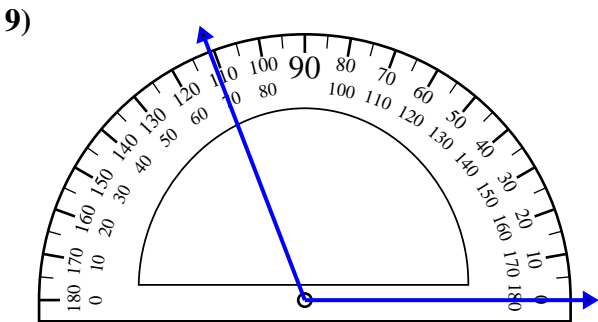
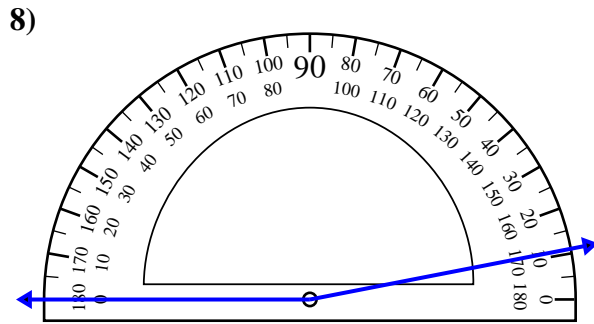
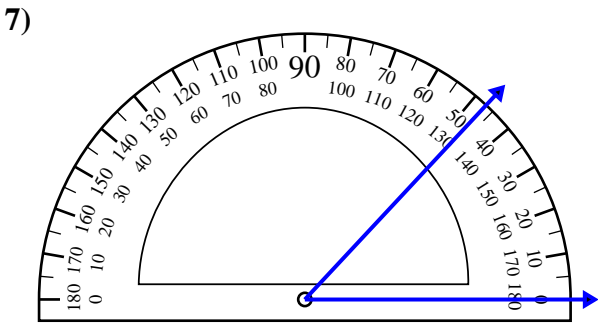
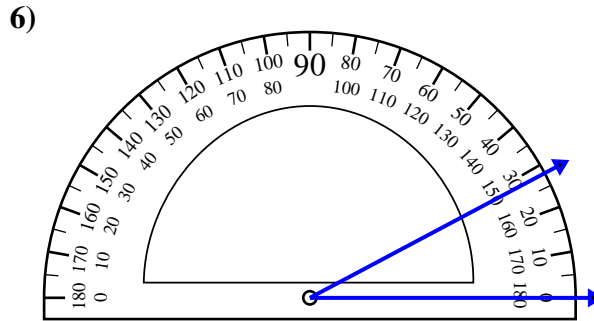
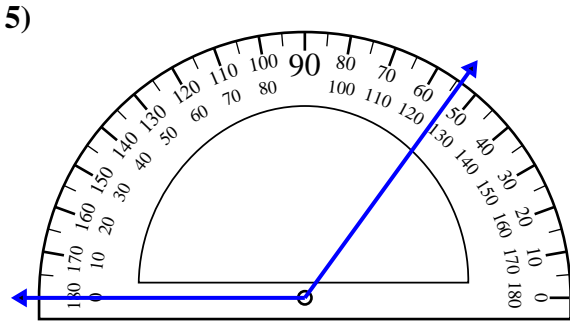
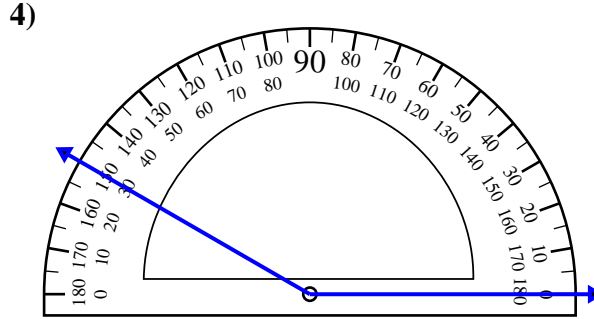
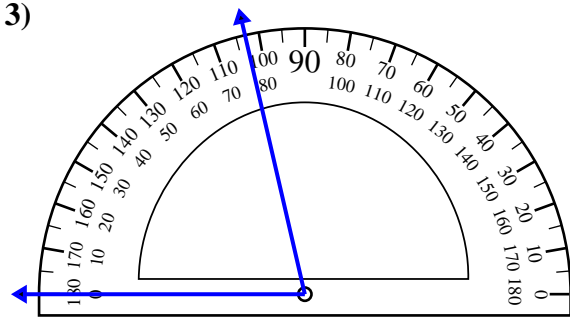
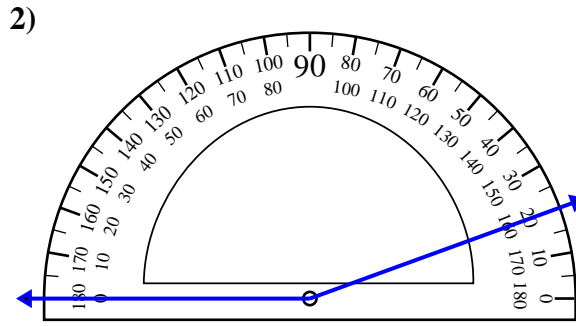
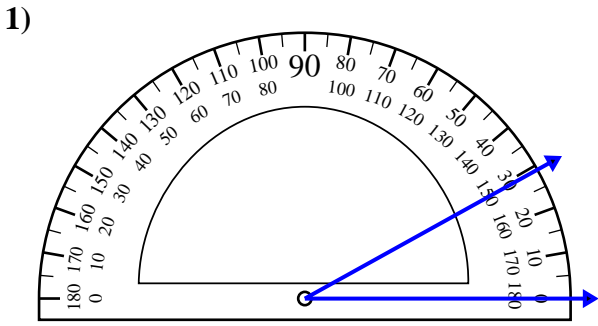


Risposte

1. 43°
2. 162°
3. 105°
4. 105°
5. 37°
6. 57°
7. 174°
8. 135°
9. 139°
10. 29°



Usa il goniometro per determinare ogni angolo.

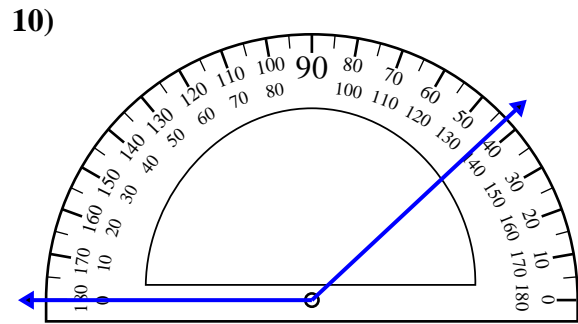
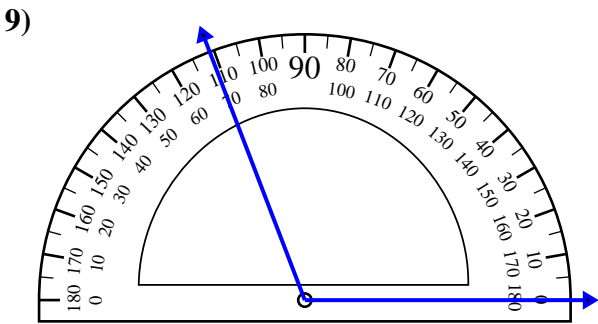
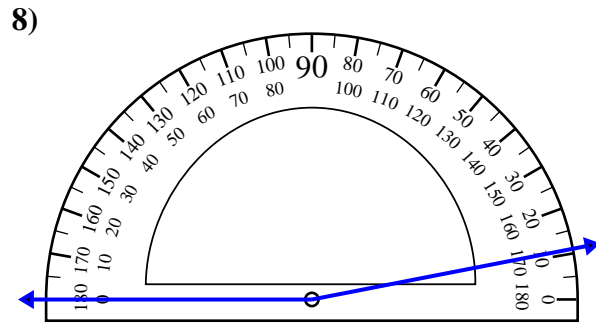
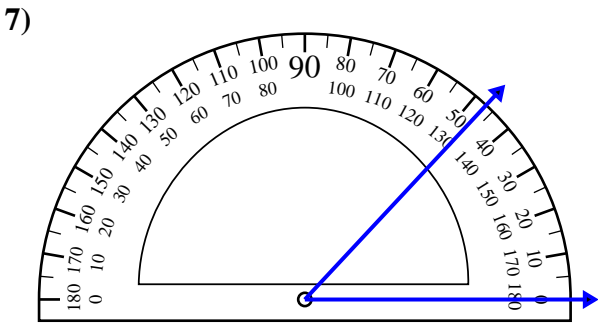
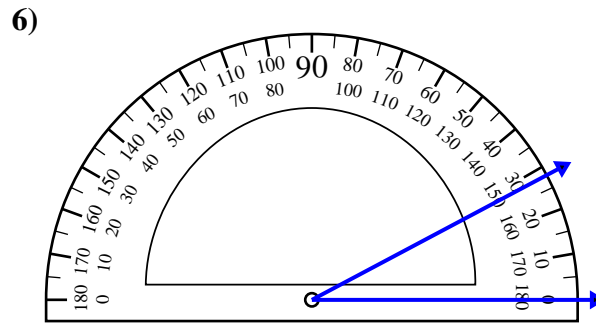
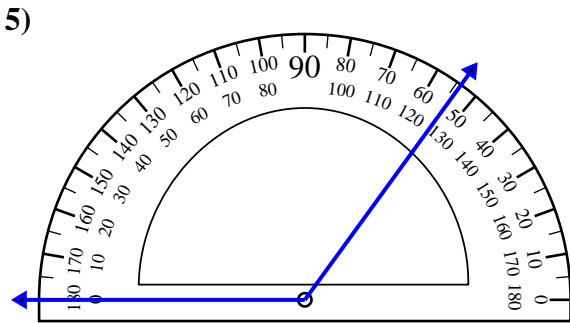
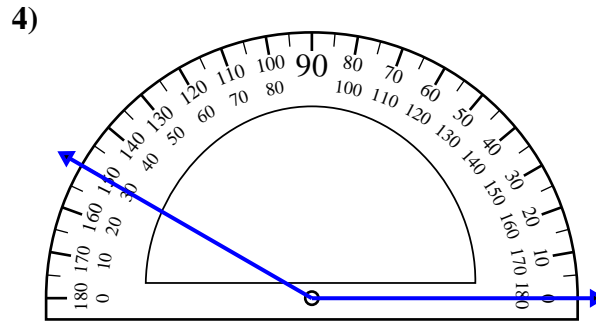
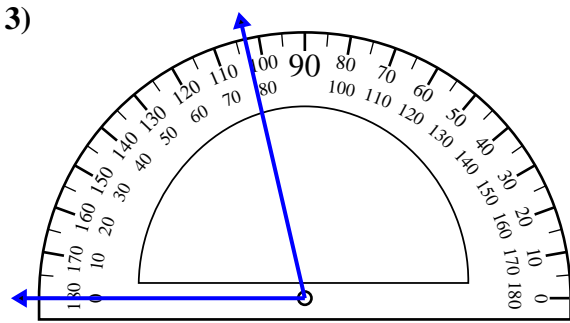
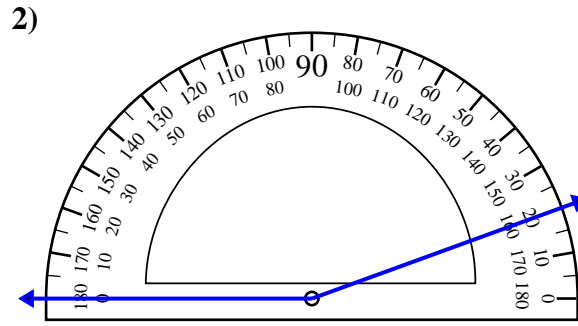
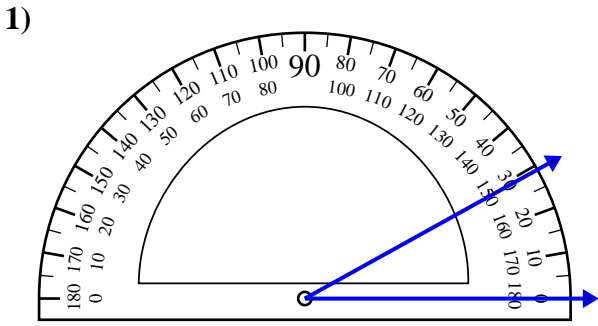


Risposte

1. _____
2. _____
3. _____
4. _____
5. _____
6. _____
7. _____
8. _____
9. _____
10. _____



Usa il goniometro per determinare ogni angolo.

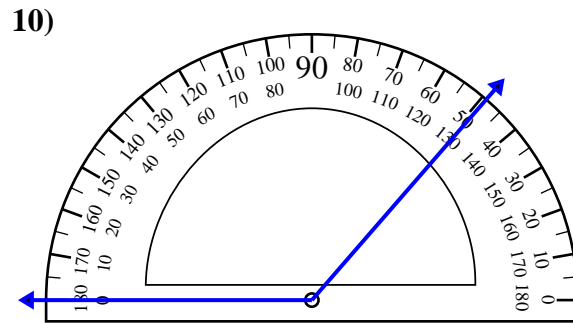
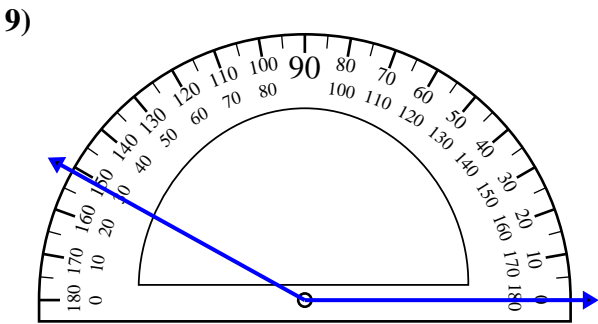
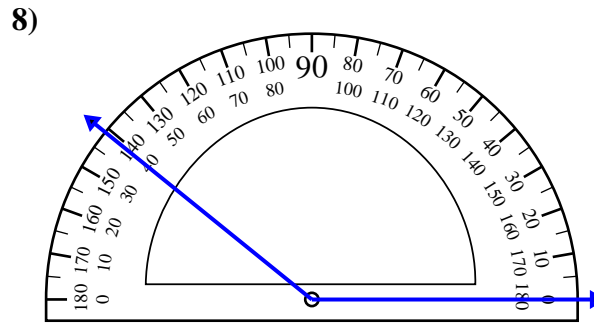
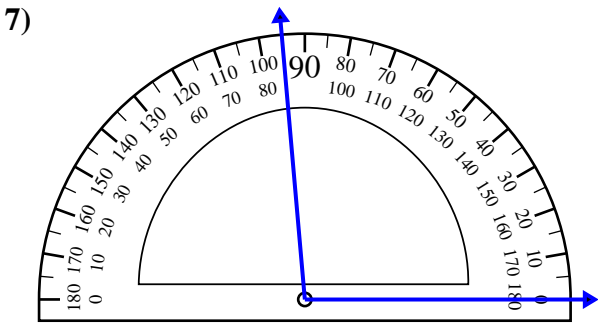
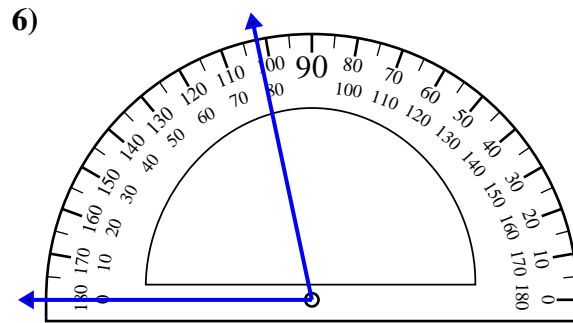
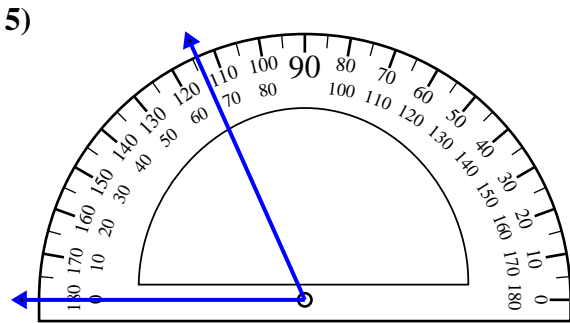
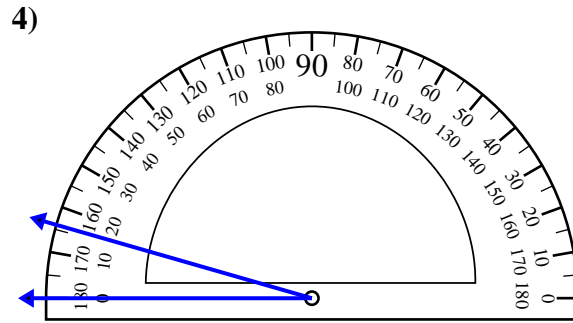
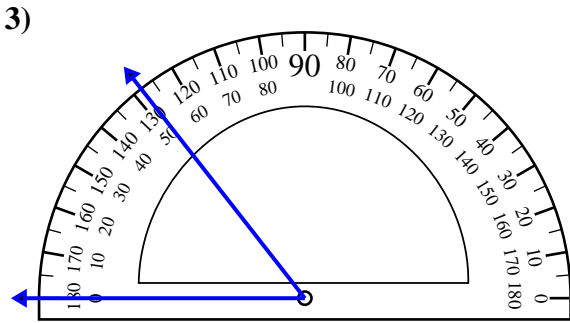
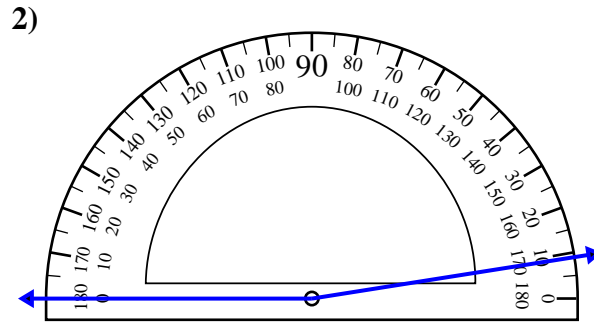
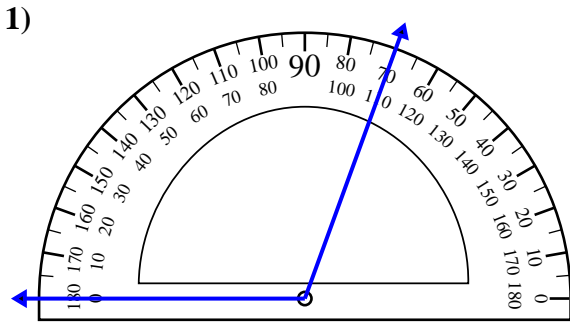


Risposte

1. 29°
2. 160°
3. 77°
4. 150°
5. 126°
6. 28°
7. 47°
8. 169°
9. 111°
10. 137°



Usa il goniometro per determinare ogni angolo.

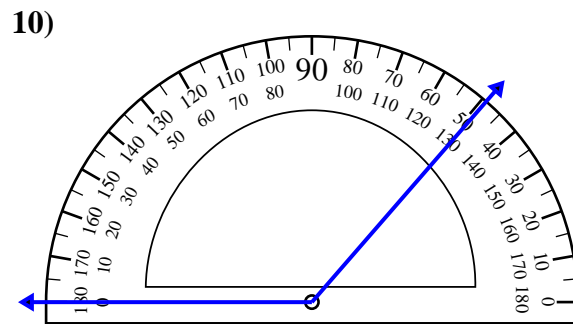
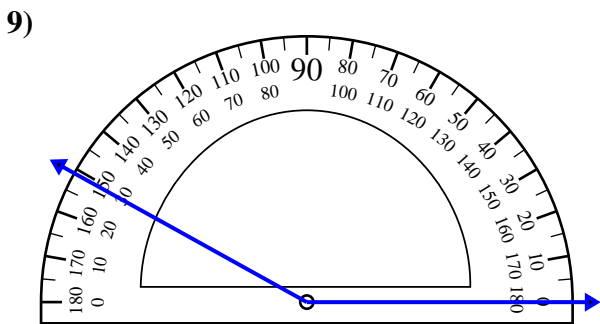
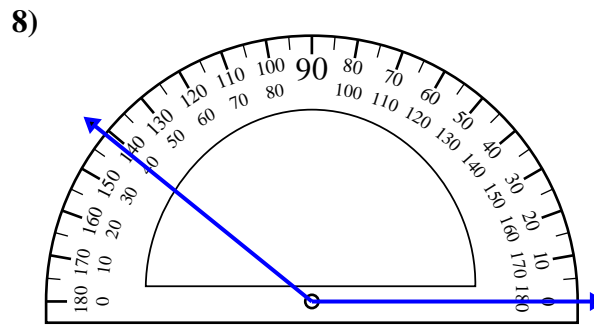
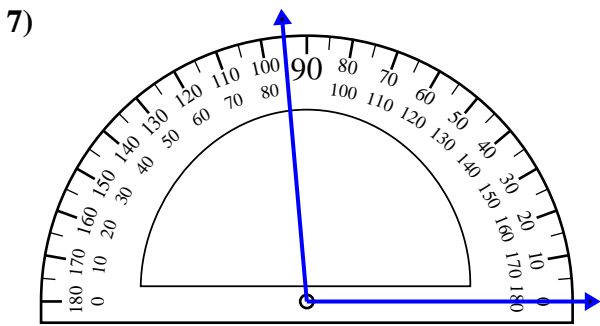
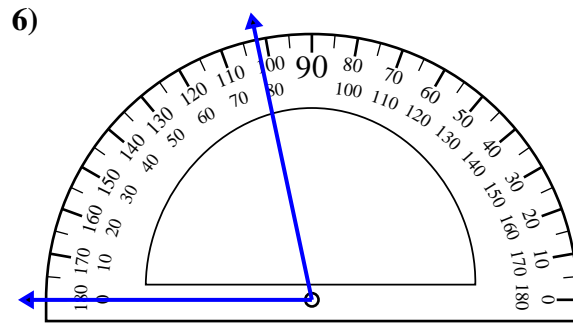
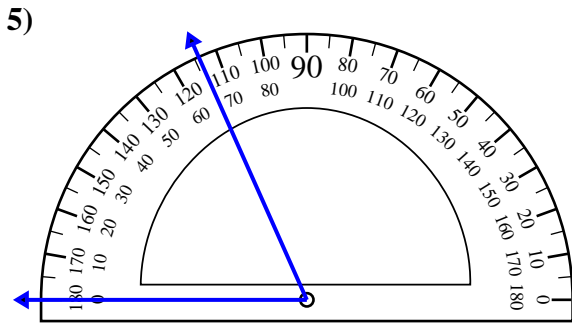
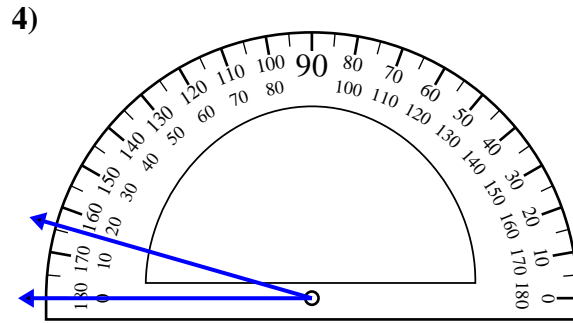
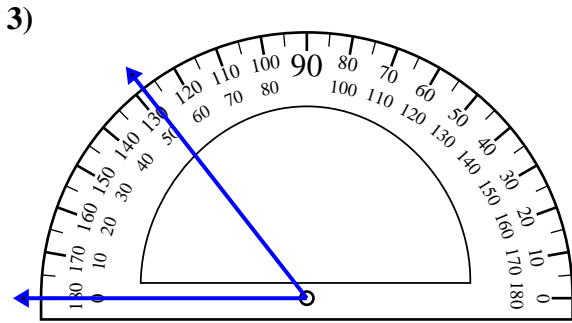
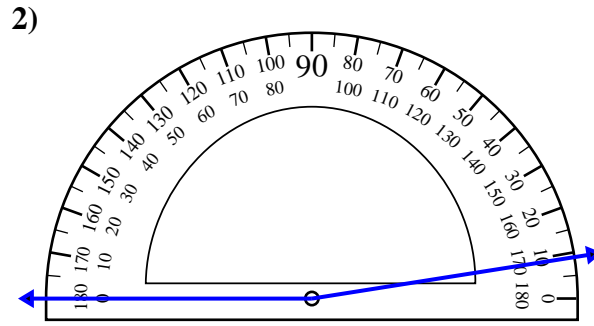
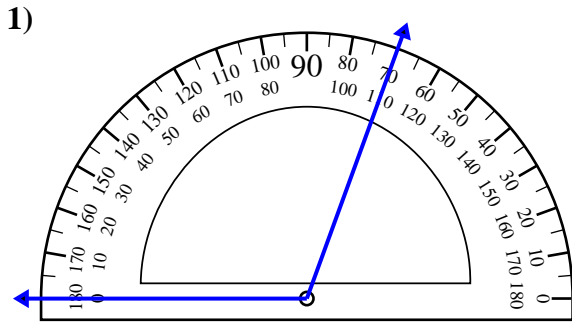


Risposte

1. _____
2. _____
3. _____
4. _____
5. _____
6. _____
7. _____
8. _____
9. _____
10. _____



Usa il goniometro per determinare ogni angolo.

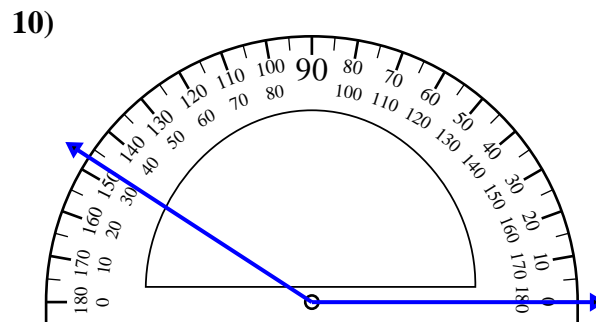
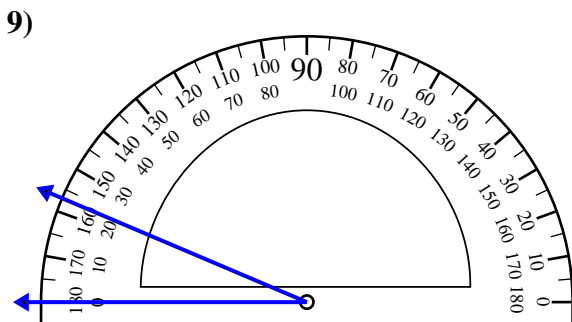
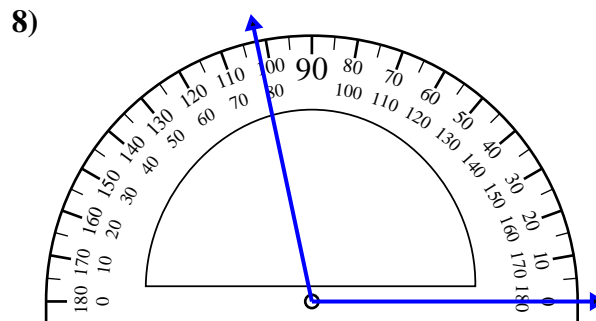
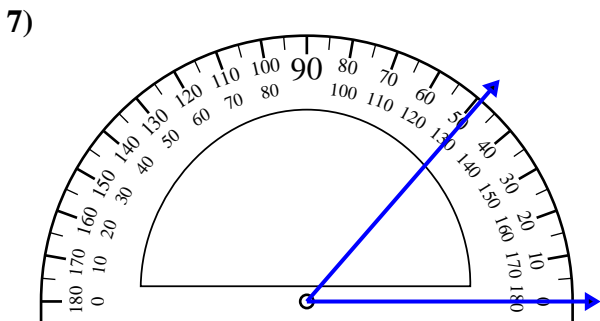
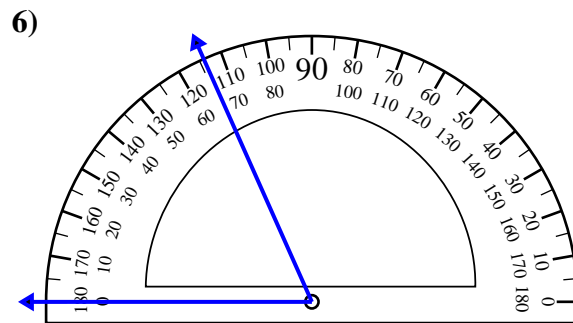
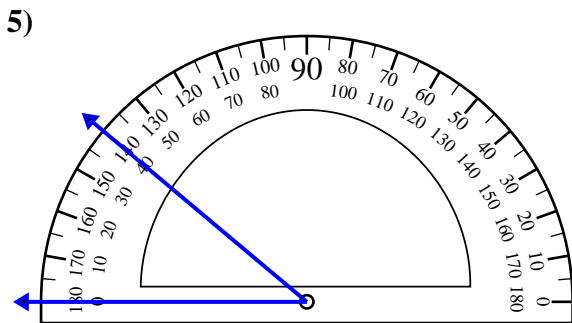
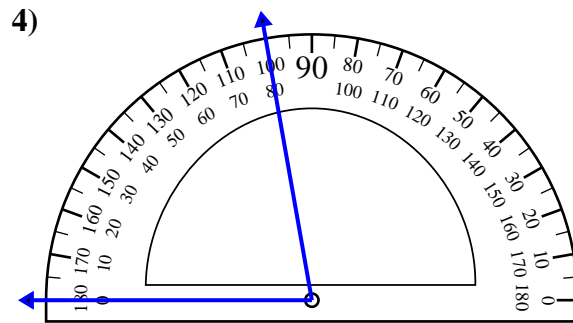
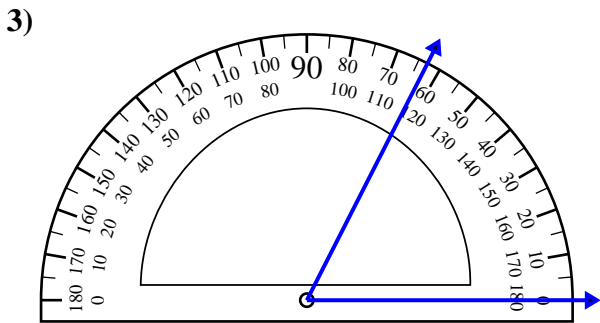
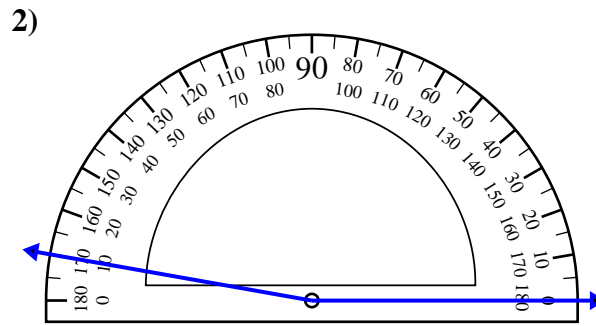
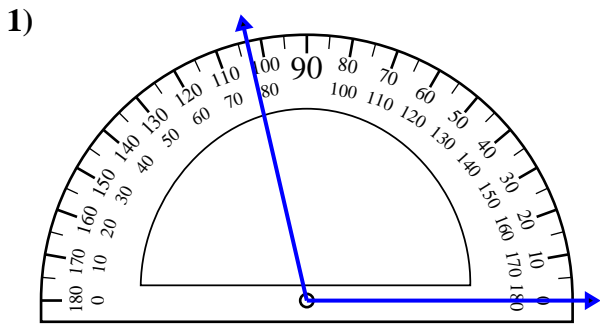


Risposte

1. 110°
2. 171°
3. 52°
4. 16°
5. 66°
6. 78°
7. 95°
8. 141°
9. 151°
10. 131°



Usa il goniometro per determinare ogni angolo.

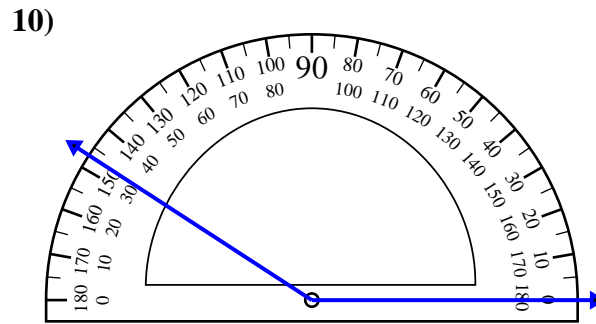
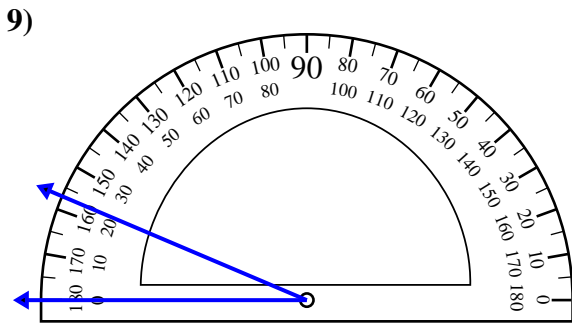
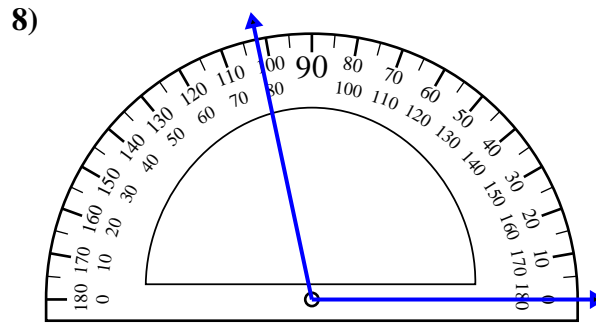
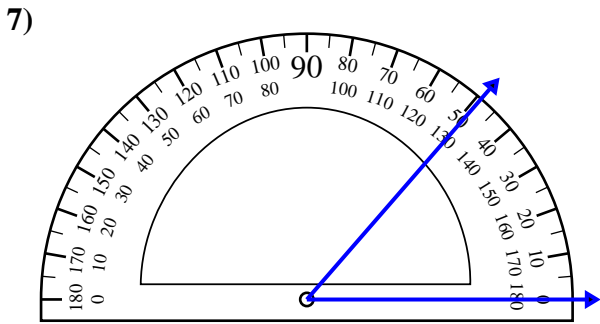
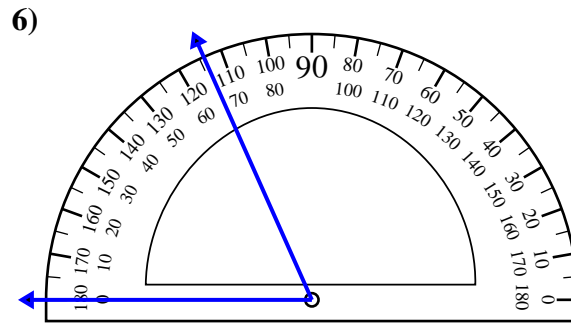
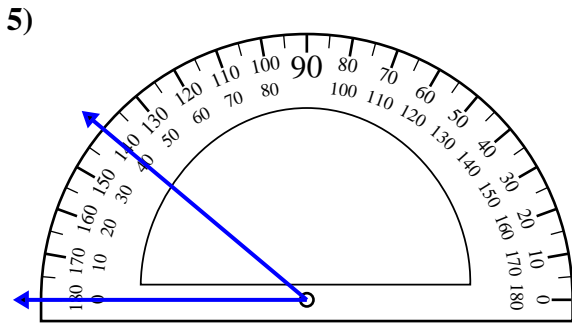
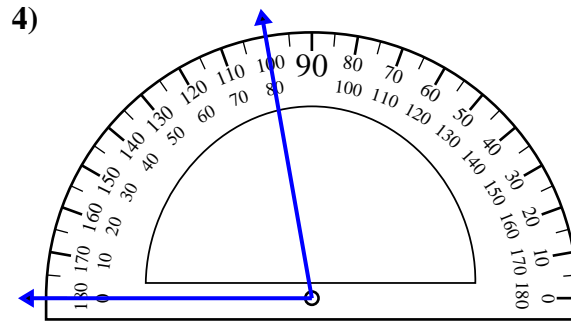
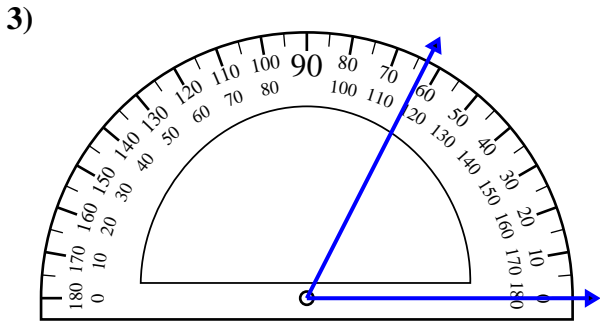
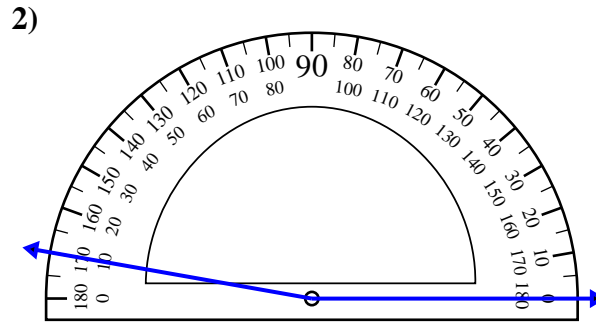
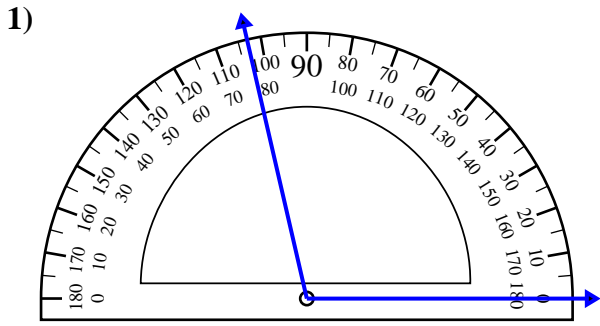


Risposte

1. _____
2. _____
3. _____
4. _____
5. _____
6. _____
7. _____
8. _____
9. _____
10. _____



Usa il goniometro per determinare ogni angolo.



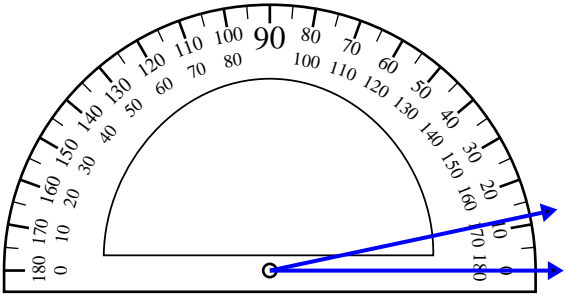
Risposte

1. 103°
2. 170°
3. 63°
4. 80°
5. 40°
6. 66°
7. 49°
8. 102°
9. 23°
10. 147°

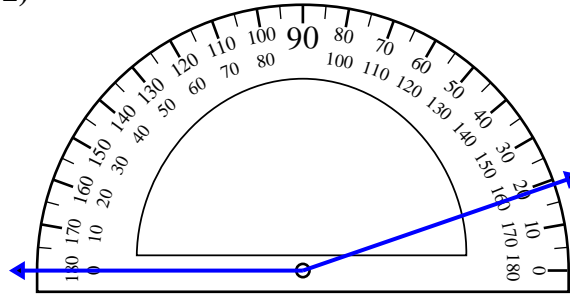


Usa il goniometro per determinare ogni angolo.

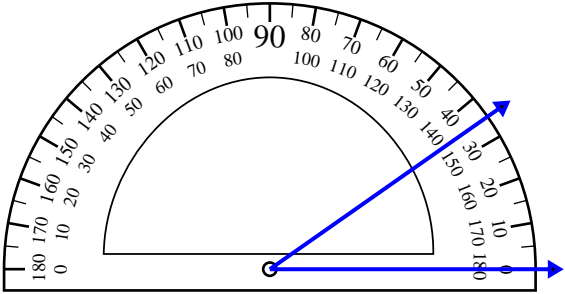
1)



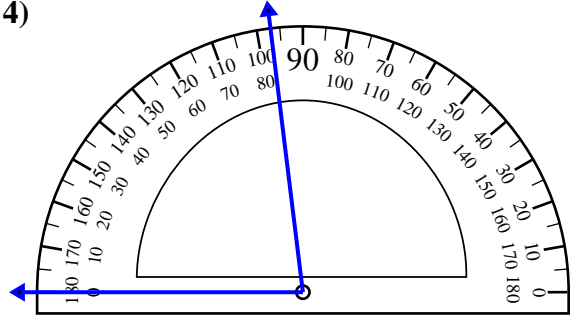
2)



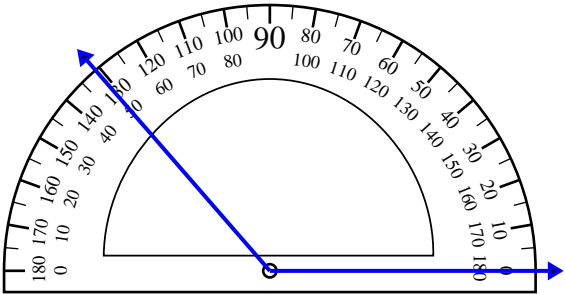
3)



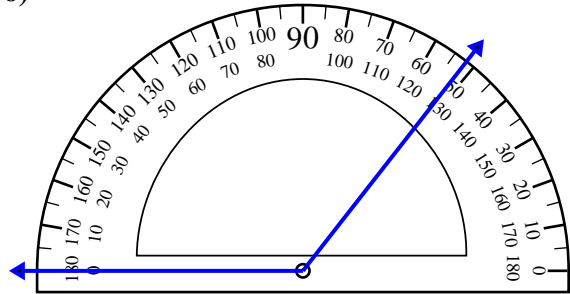
4)



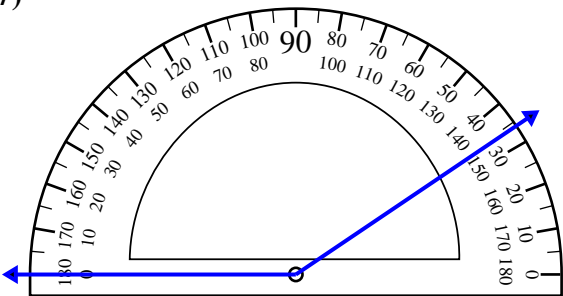
5)



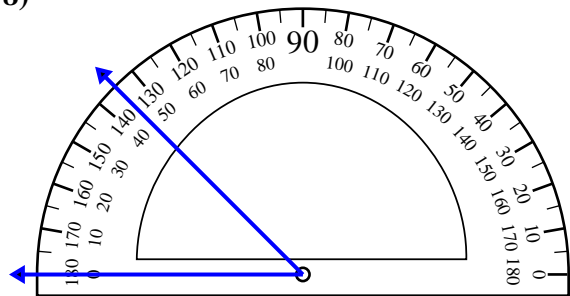
6)



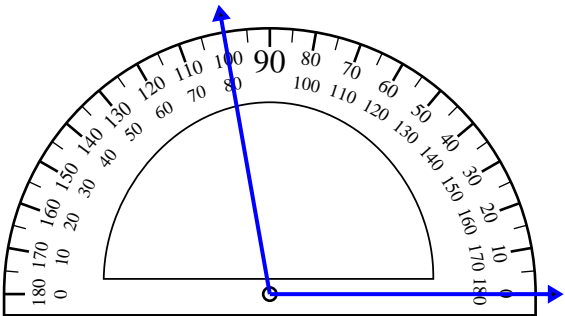
7)



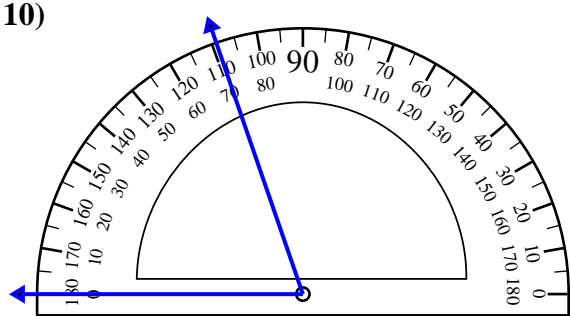
8)



9)



10)



Risposte

1. _____

2. _____

3. _____

4. _____

5. _____

6. _____

7. _____

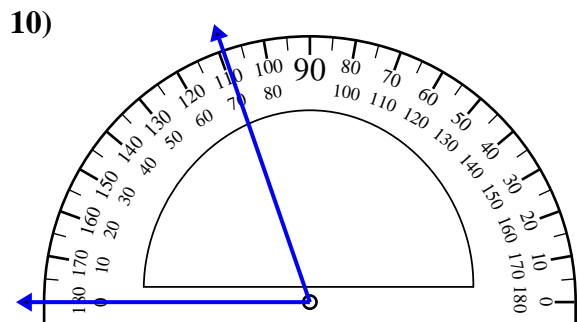
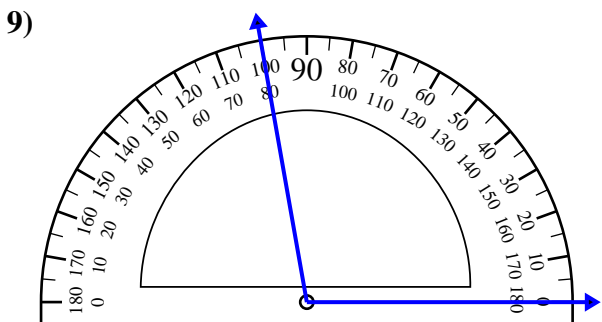
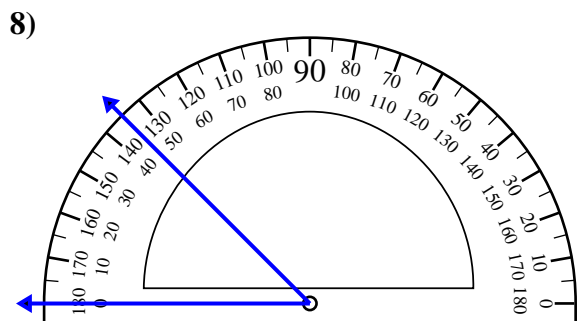
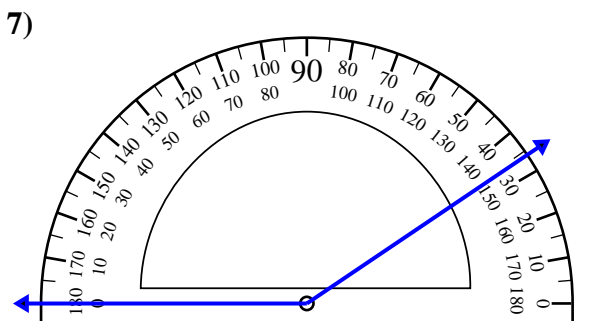
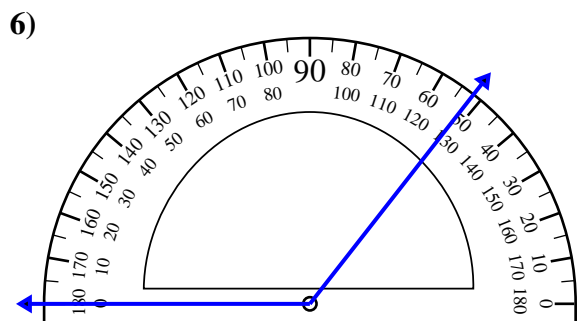
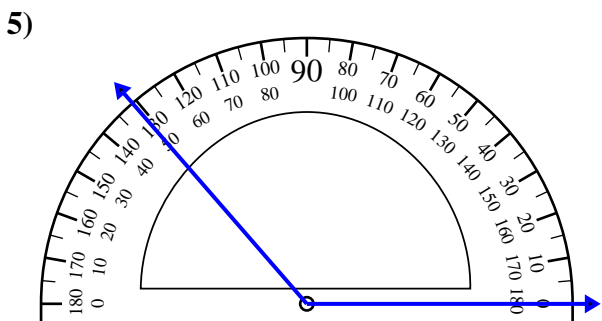
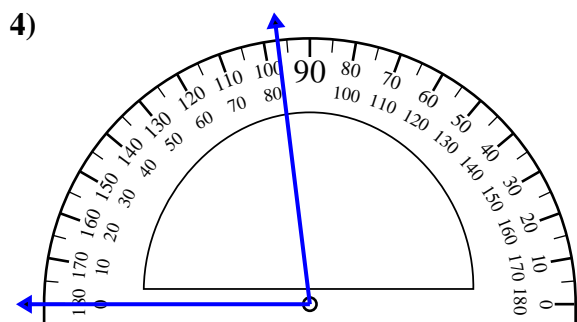
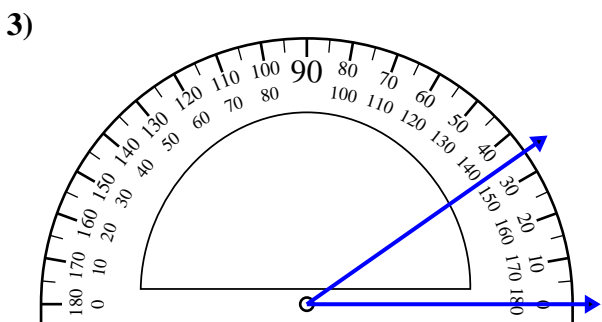
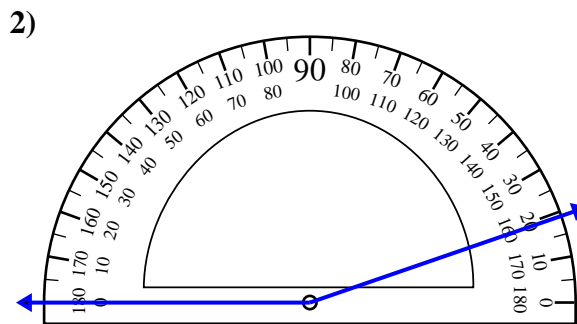
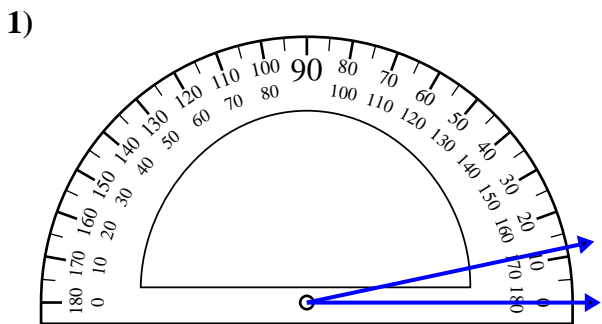
8. _____

9. _____

10. _____



Usa il goniometro per determinare ogni angolo.



Risposte

1. 12°

2. 161°

3. 35°

4. 83°

5. 131°

6. 128°

7. 146°

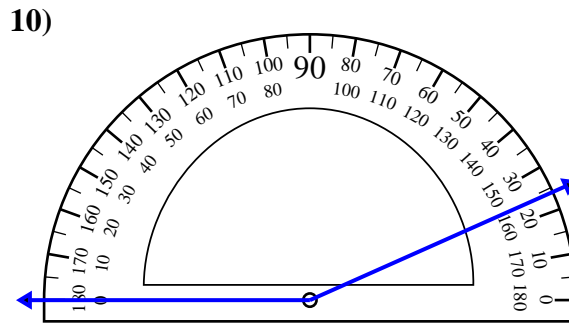
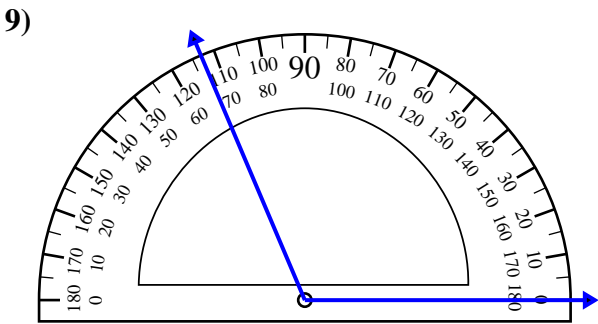
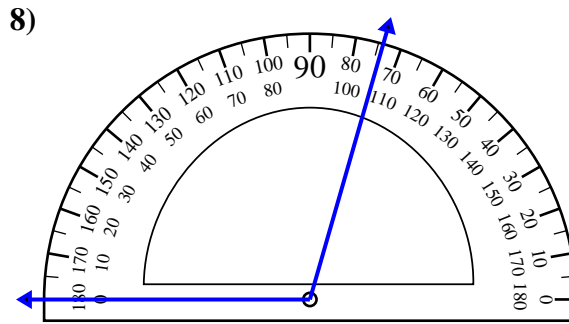
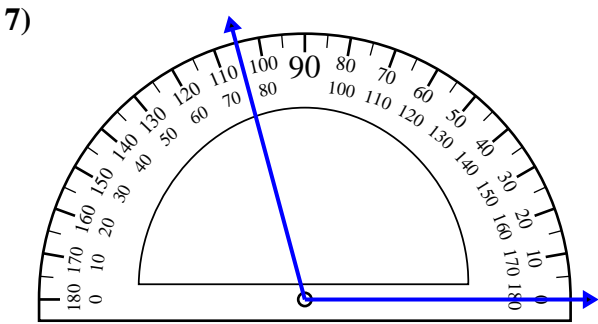
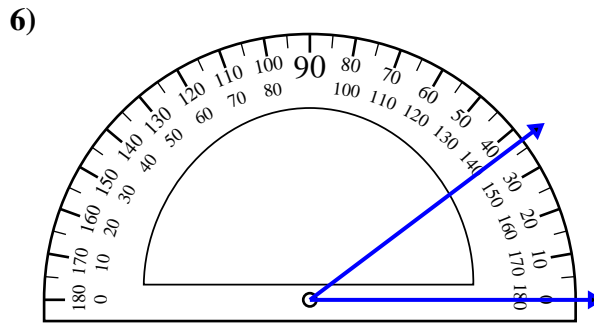
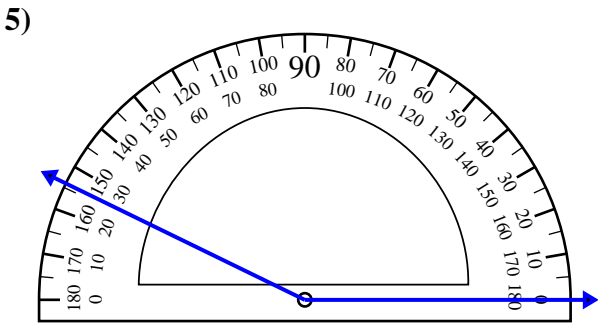
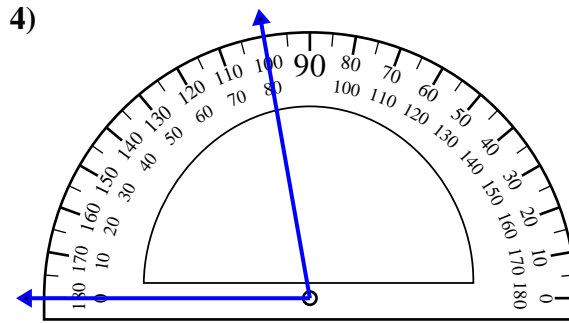
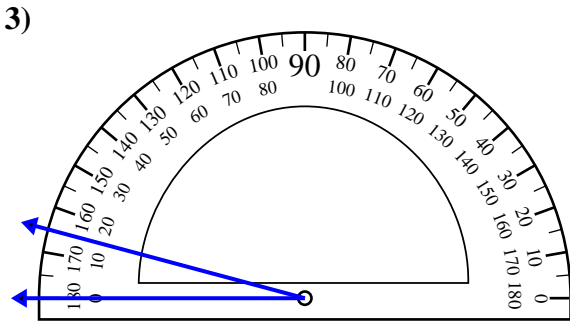
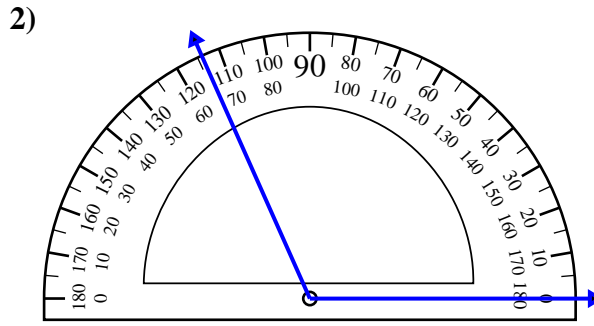
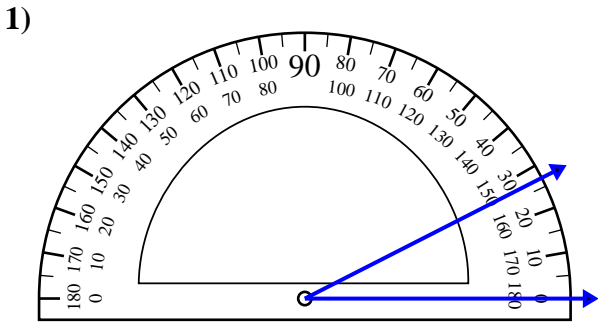
8. 45°

9. 100°

10. 71°



Usa il goniometro per determinare ogni angolo.

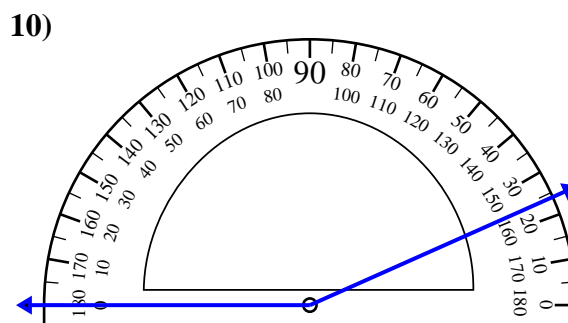
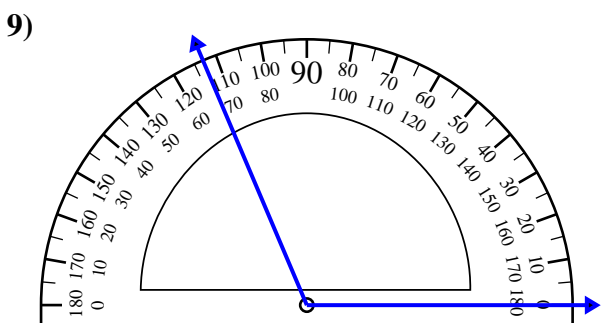
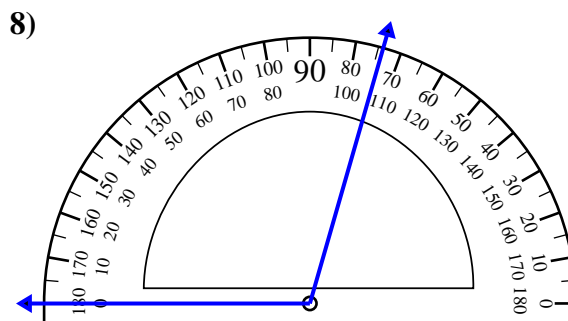
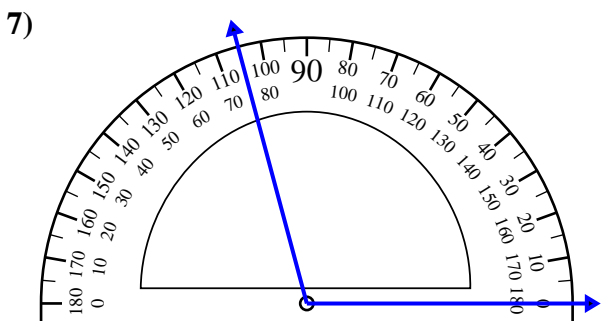
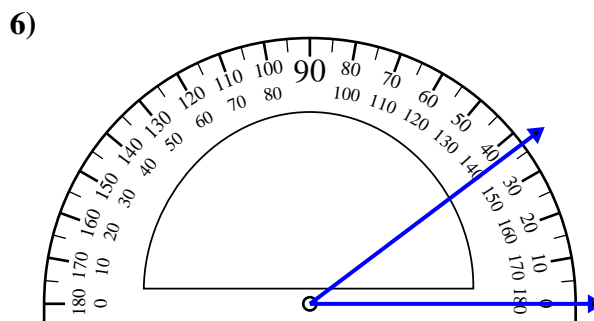
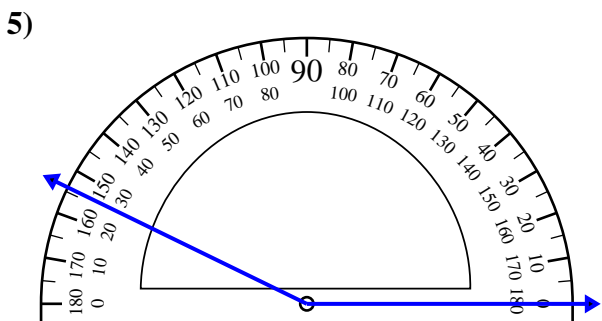
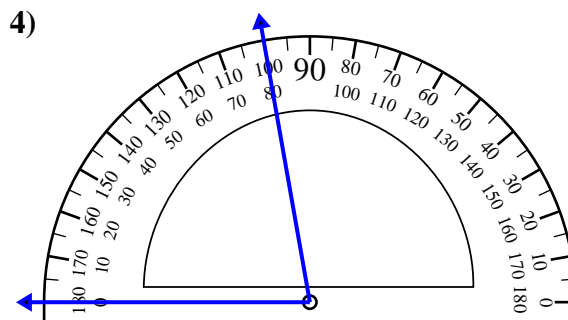
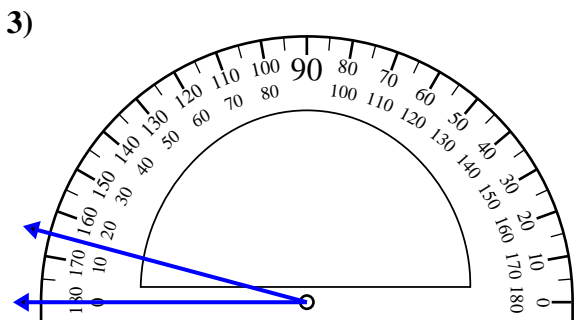
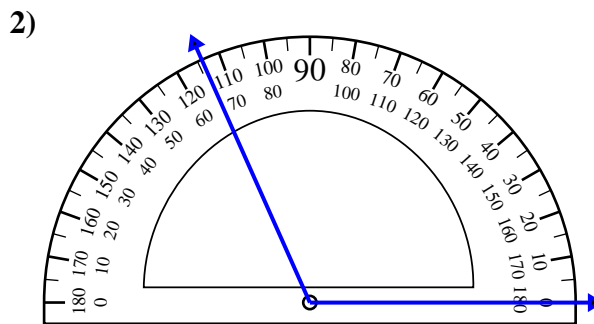
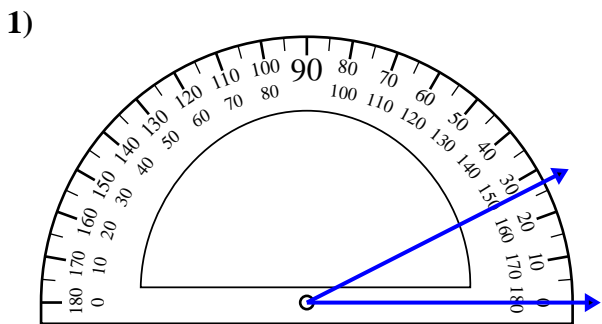


Risposte

1. _____
2. _____
3. _____
4. _____
5. _____
6. _____
7. _____
8. _____
9. _____
10. _____



Usa il goniometro per determinare ogni angolo.



Risposte

1. 27°

2. 114°

3. 15°

4. 80°

5. 154°

6. 37°

7. 105°

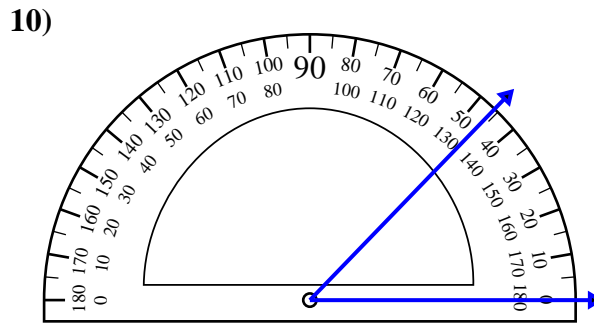
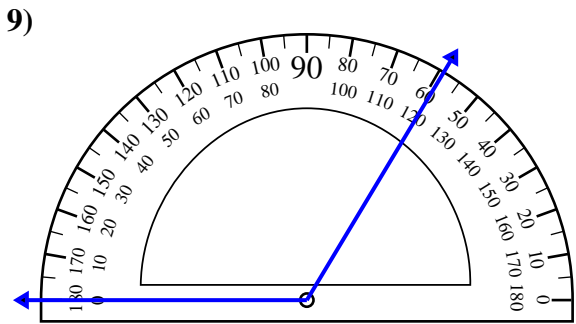
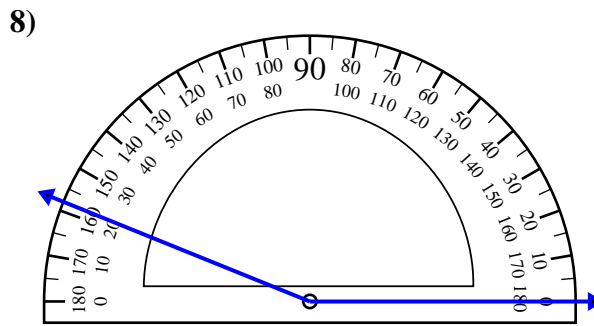
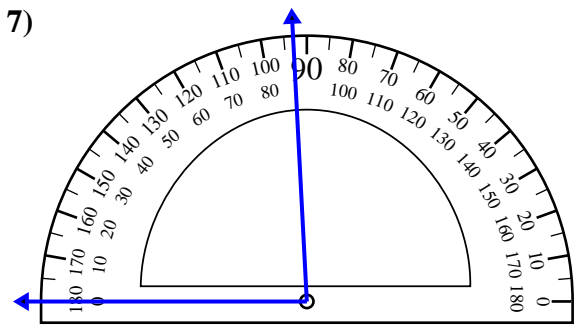
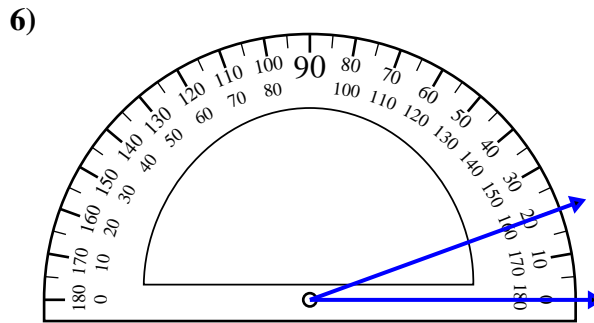
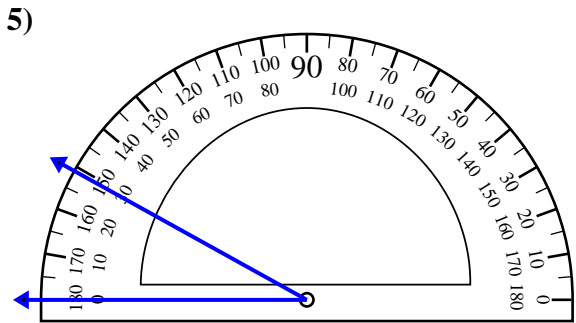
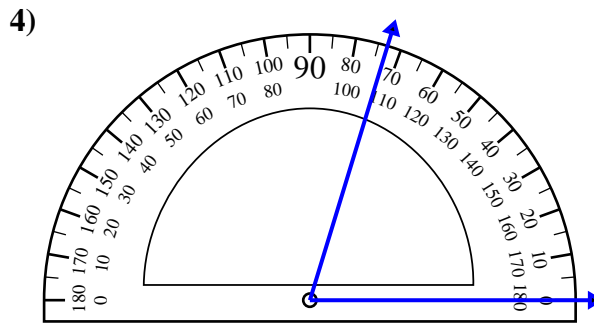
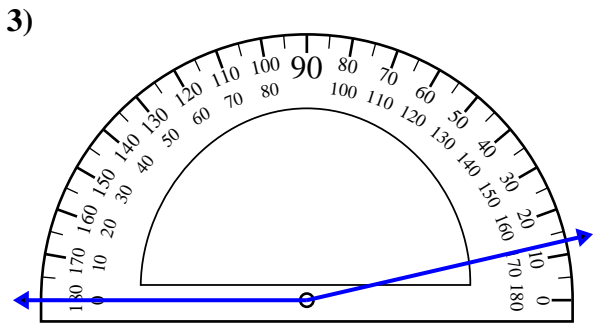
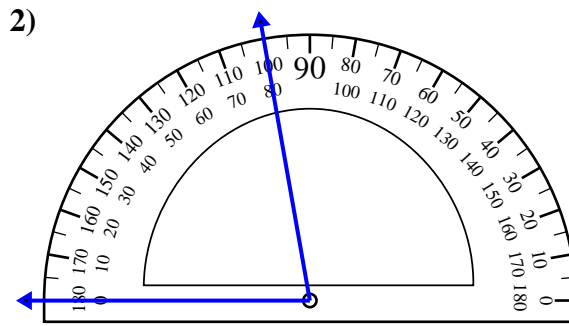
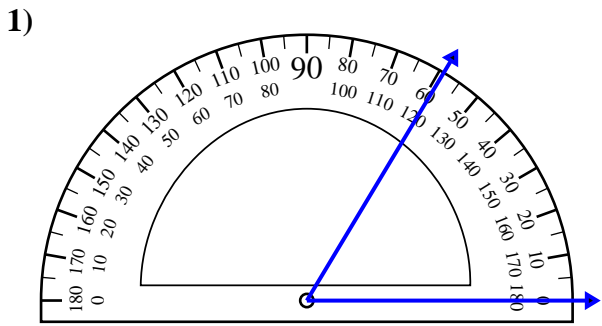
8. 106°

9. 113°

10. 156°



Usa il goniometro per determinare ogni angolo.

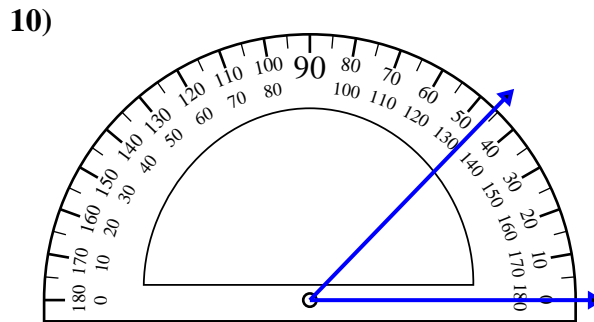
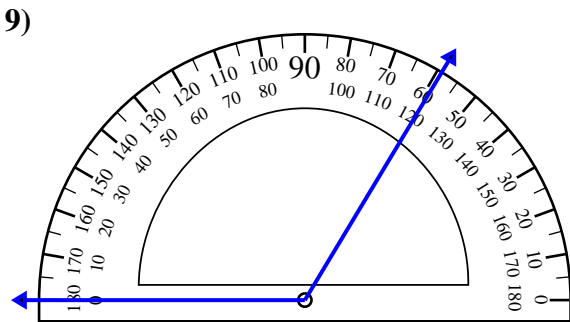
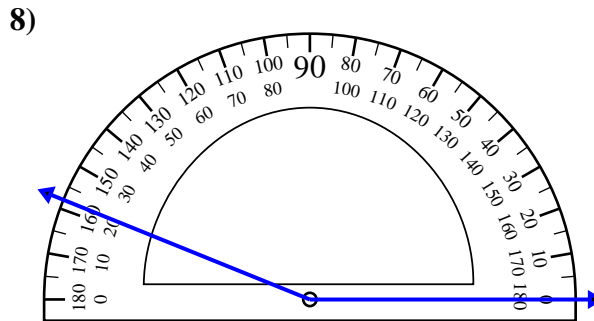
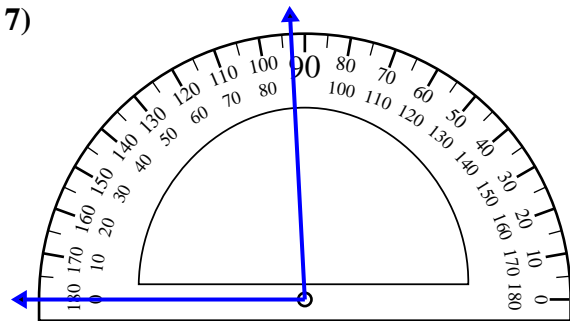
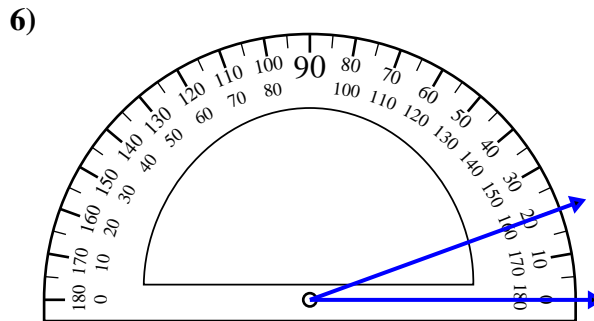
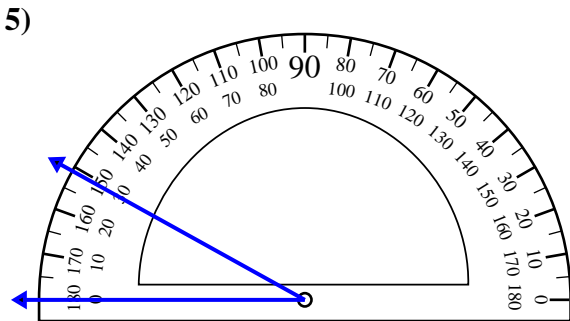
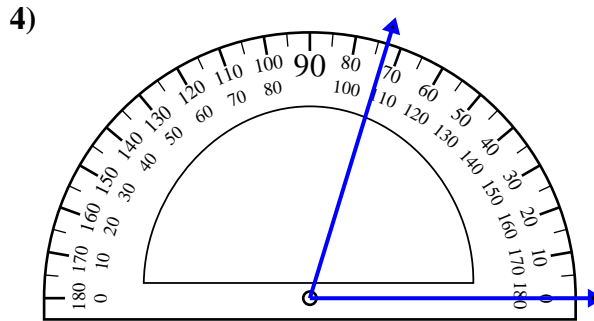
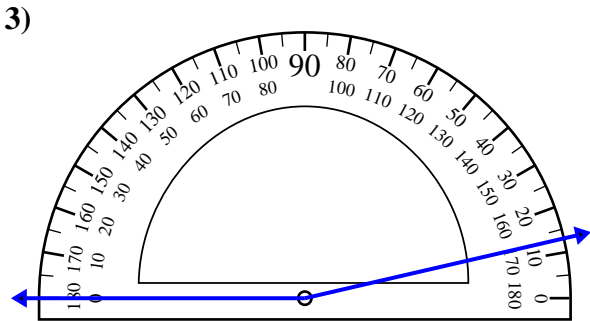
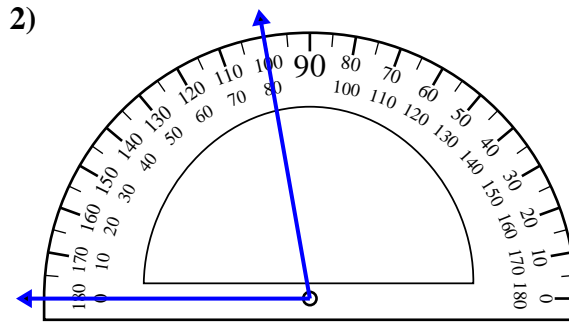
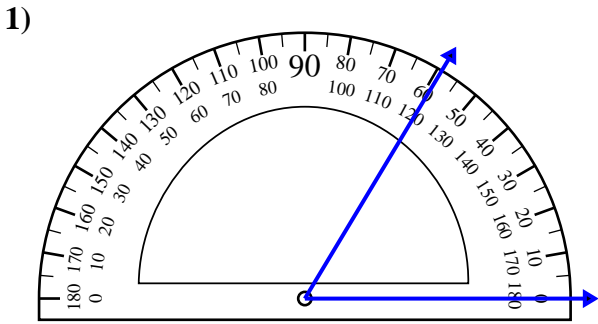


Risposte

1. _____
2. _____
3. _____
4. _____
5. _____
6. _____
7. _____
8. _____
9. _____
10. _____



Usa il goniometro per determinare ogni angolo.

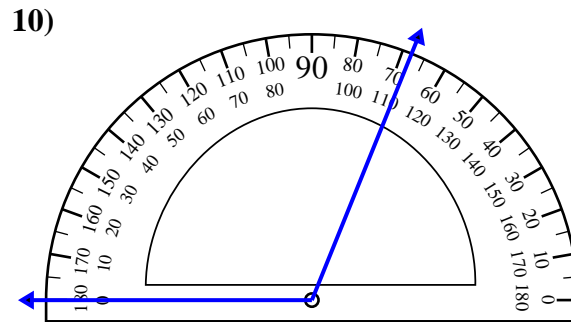
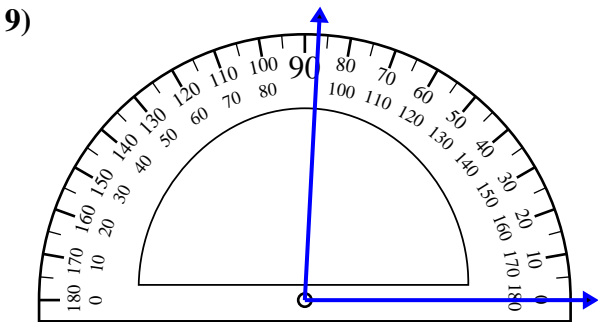
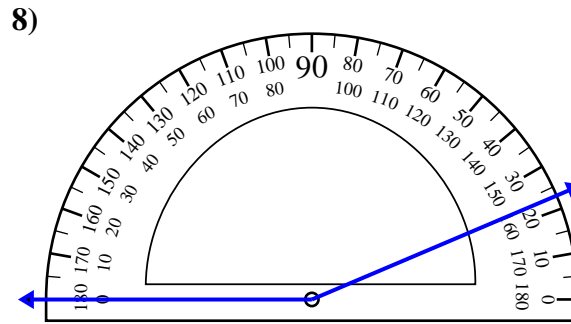
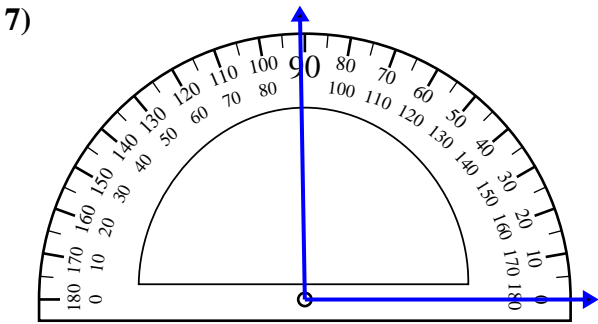
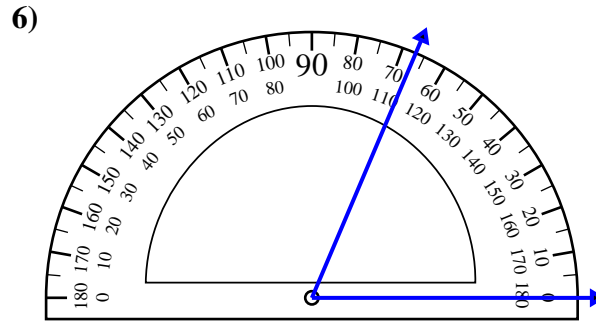
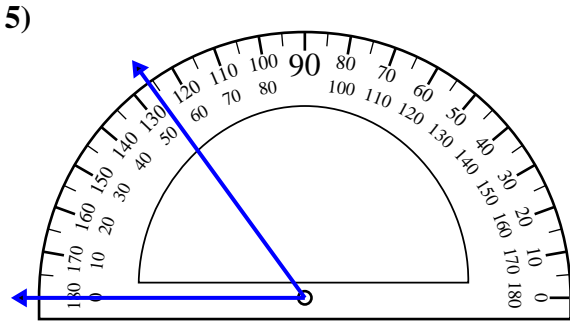
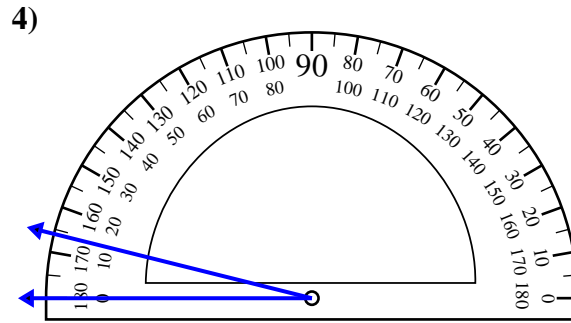
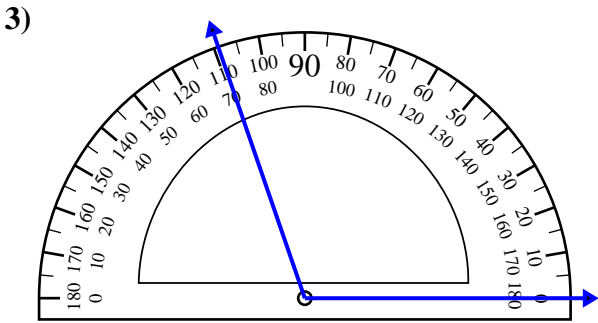
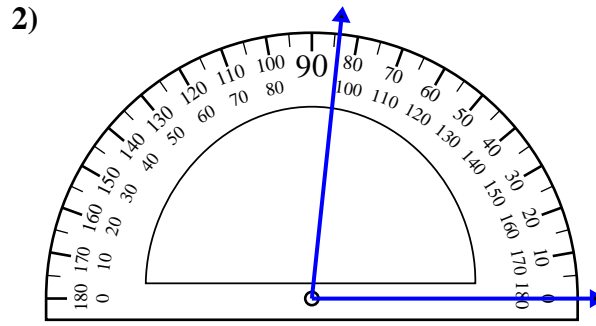
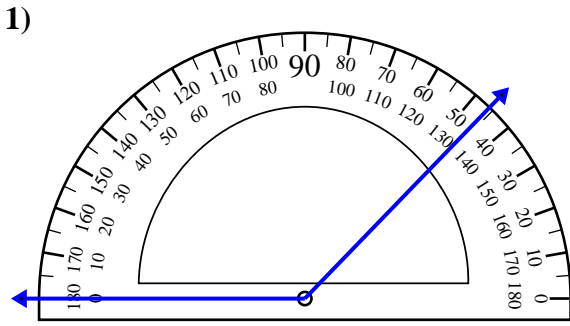


Risposte

1. 59°
2. 80°
3. 167°
4. 73°
5. 29°
6. 20°
7. 87°
8. 158°
9. 121°
10. 46°



Usa il goniometro per determinare ogni angolo.

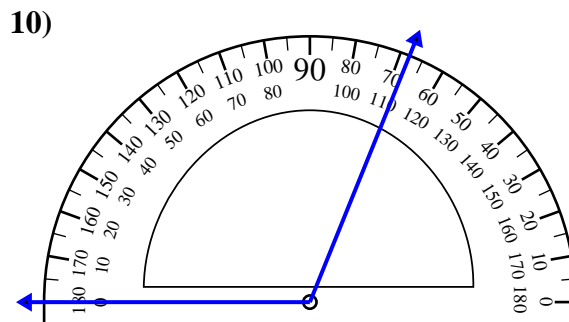
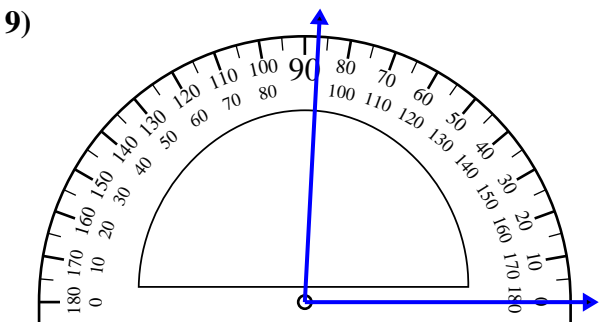
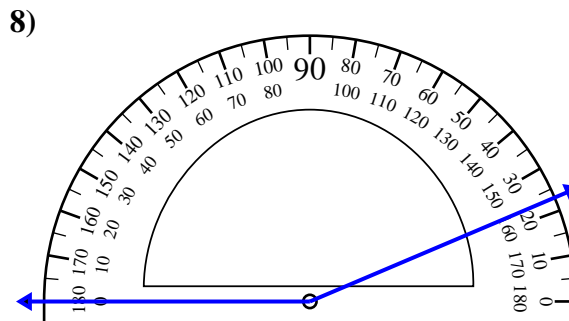
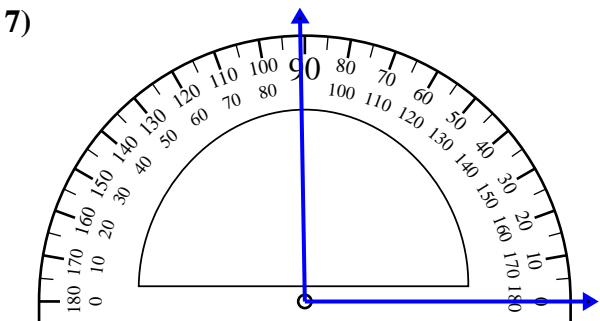
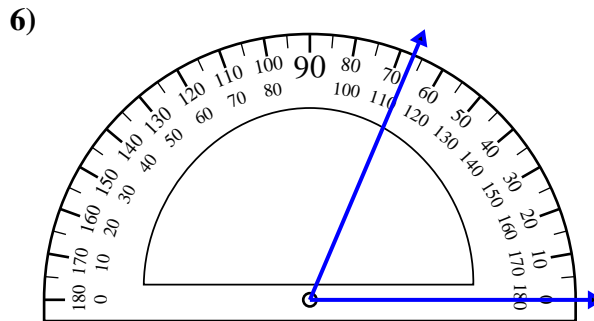
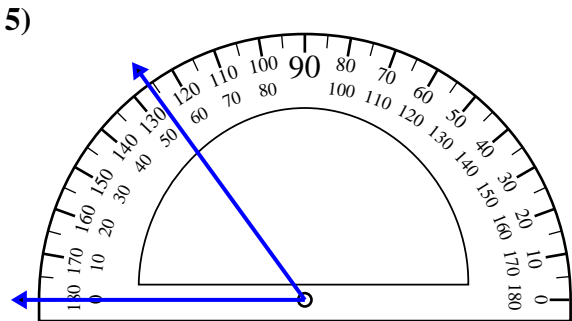
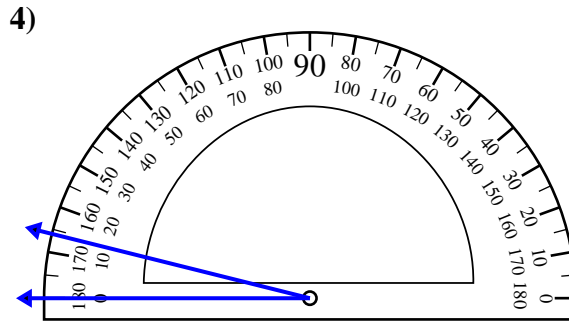
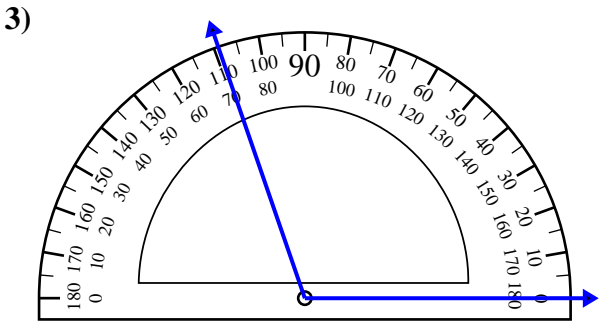
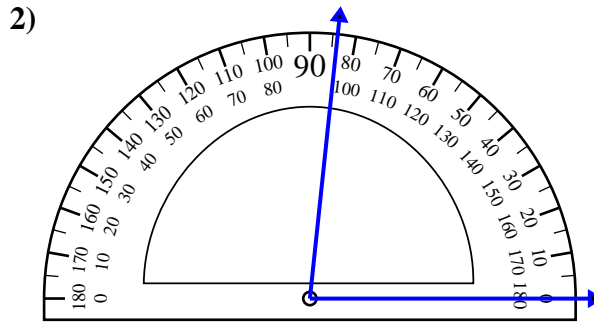
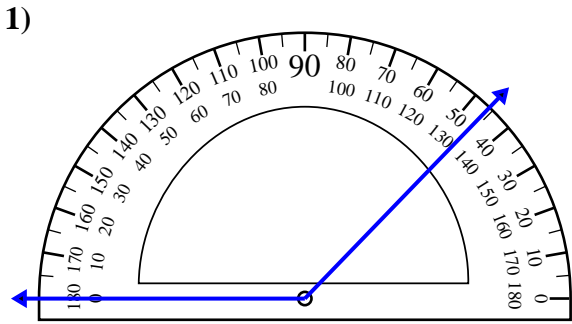


Risposte

1. _____
2. _____
3. _____
4. _____
5. _____
6. _____
7. _____
8. _____
9. _____
10. _____



Usa il goniometro per determinare ogni angolo.



Risposte

1. 134°

2. 84°

3. 109°

4. 14°

5. 54°

6. 67°

7. 91°

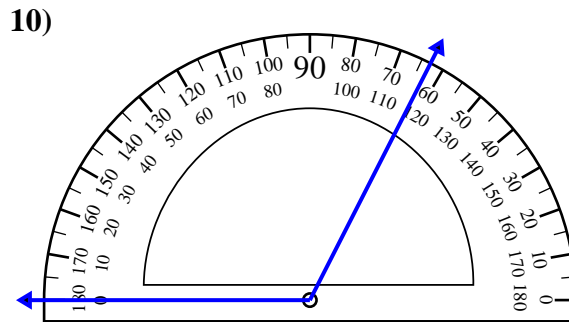
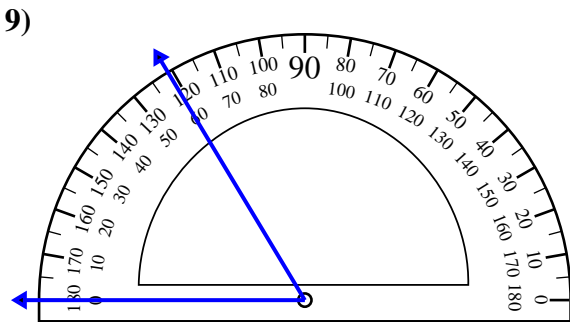
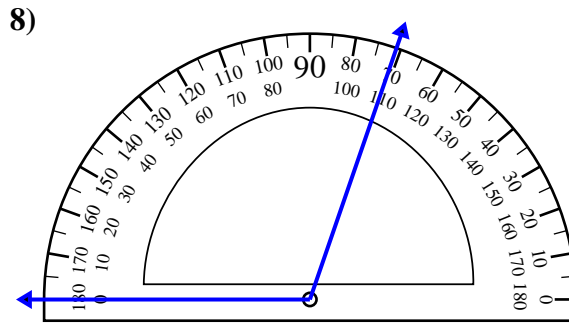
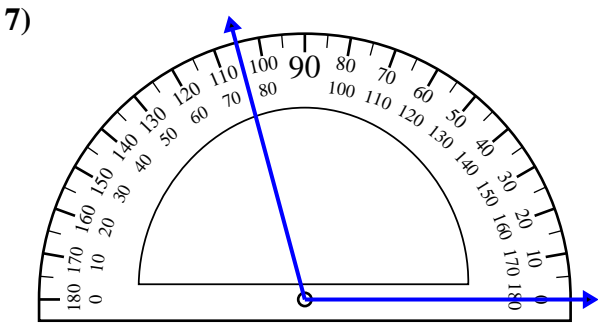
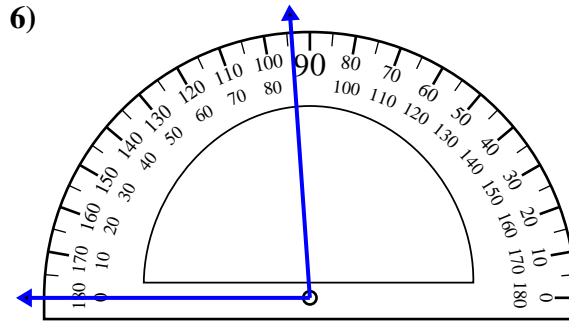
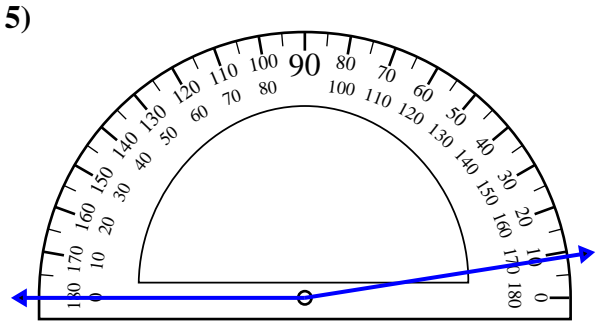
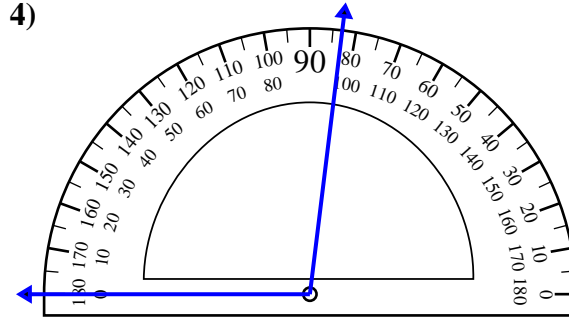
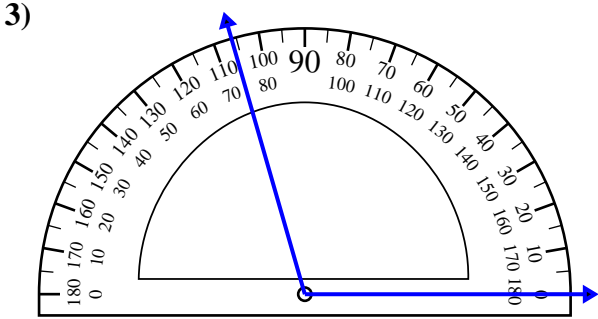
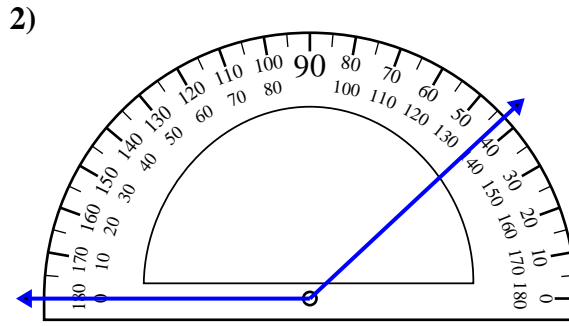
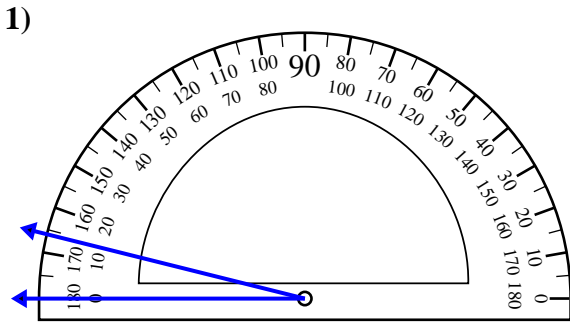
8. 157°

9. 87°

10. 112°



Usa il goniometro per determinare ogni angolo.

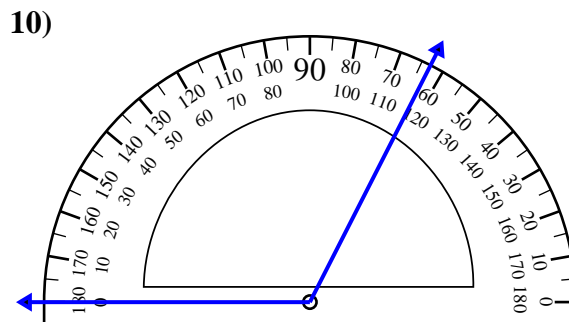
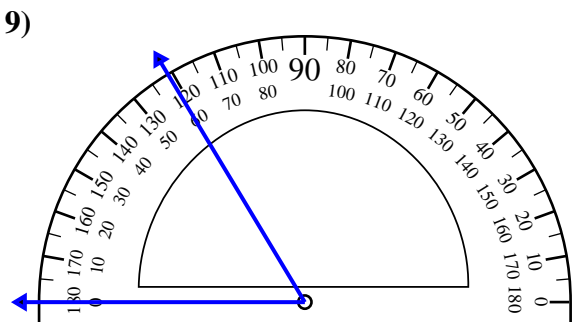
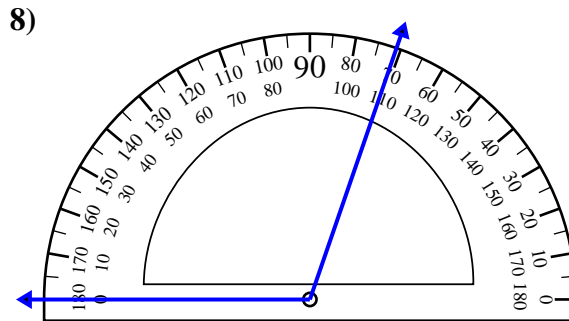
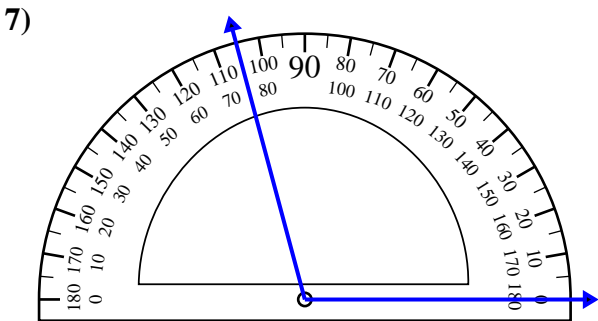
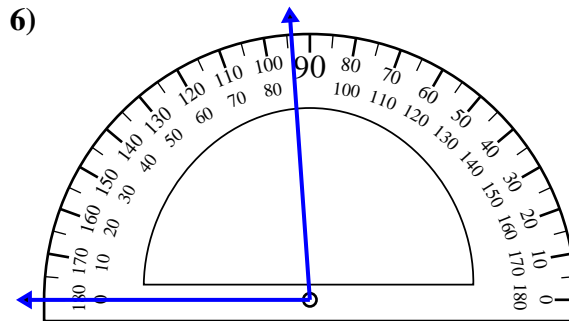
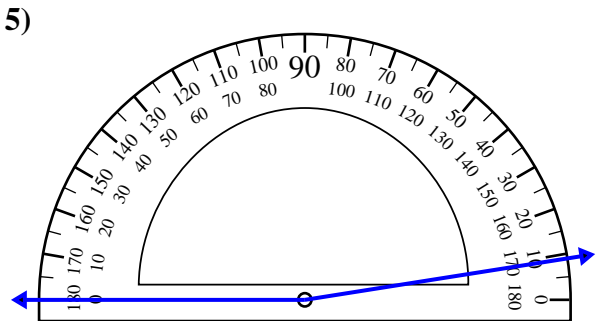
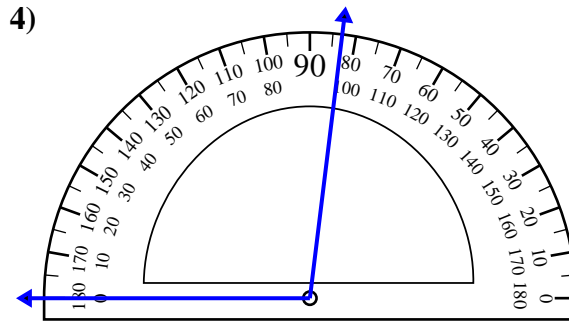
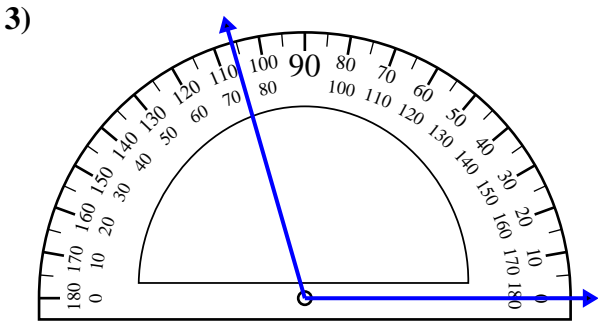
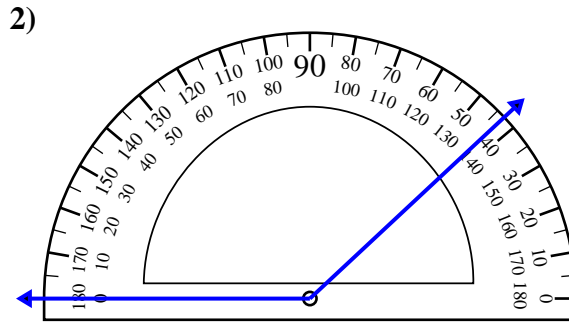
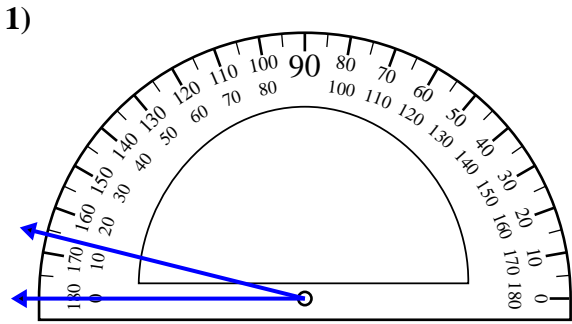


Risposte

1. _____
2. _____
3. _____
4. _____
5. _____
6. _____
7. _____
8. _____
9. _____
10. _____



Usa il goniometro per determinare ogni angolo.



Risposte

1. 14°

2. 137°

3. 106°

4. 97°

5. 171°

6. 86°

7. 105°

8. 109°

9. 59°

10. 117°