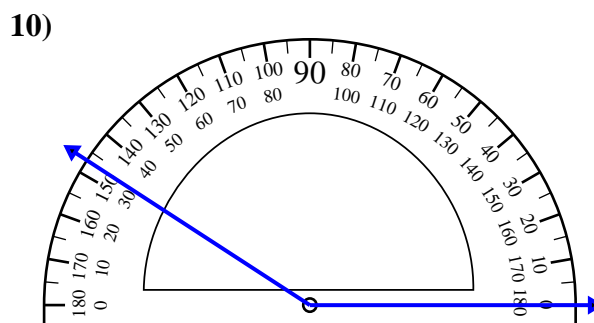
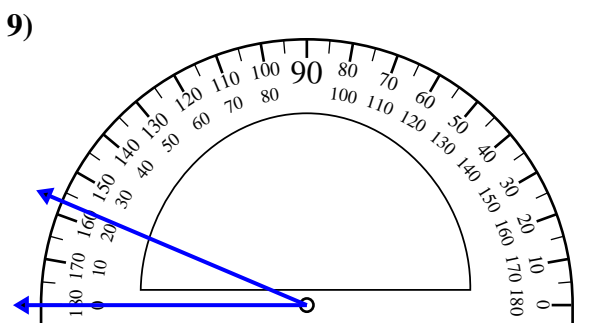
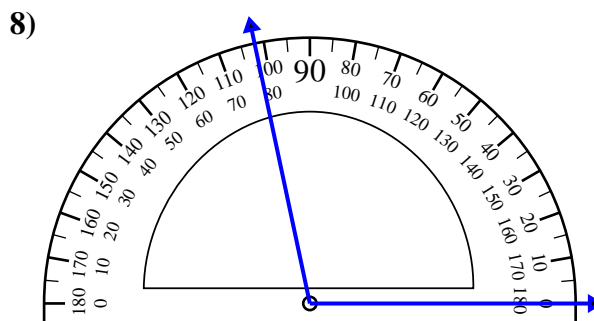
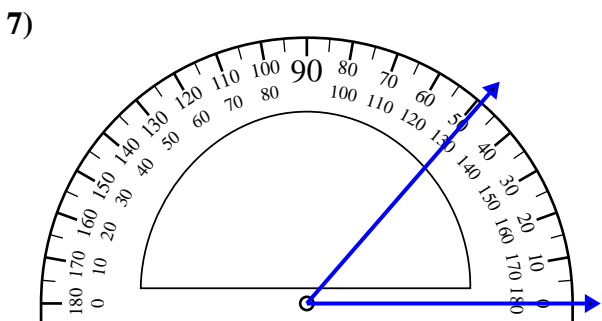
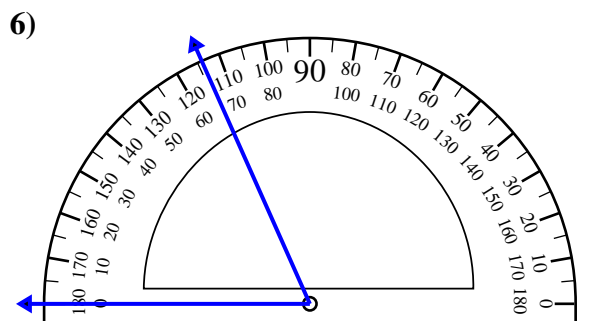
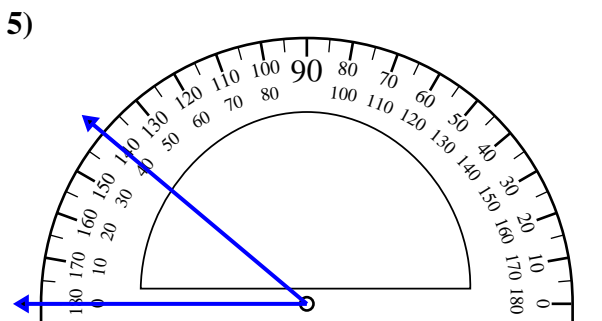
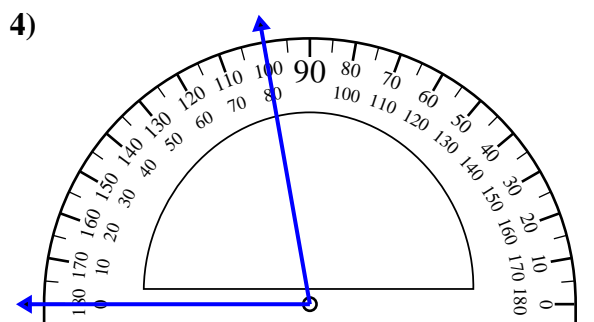
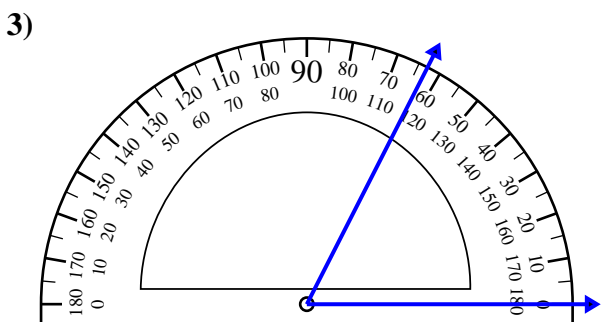
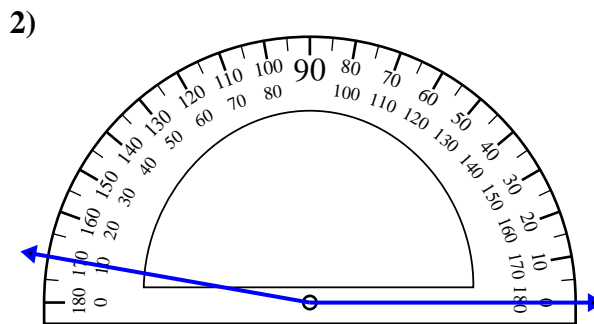
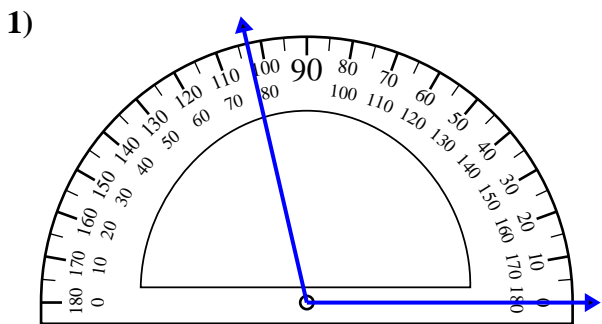




Usa il goniometro per determinare ogni angolo.

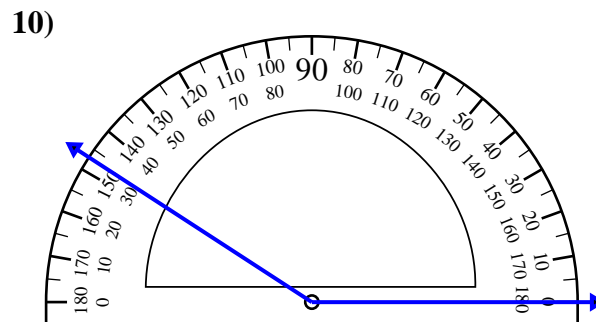
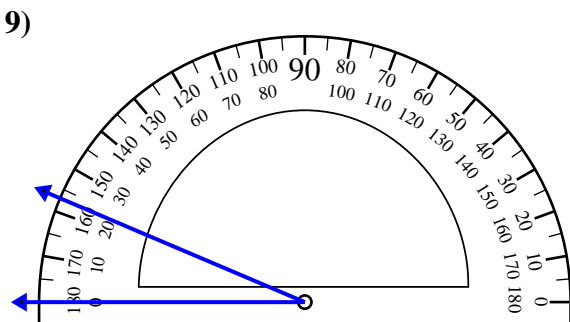
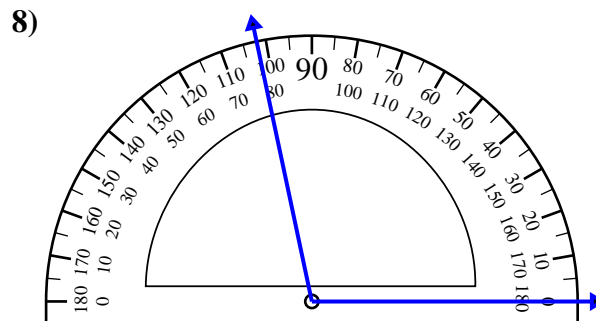
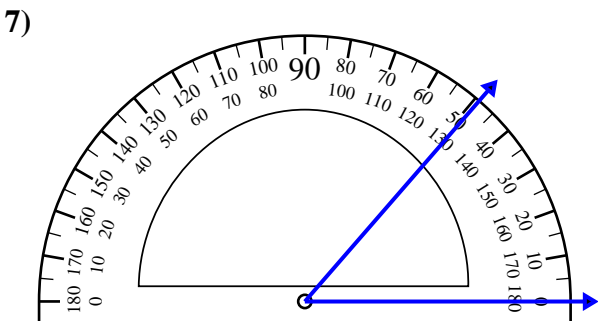
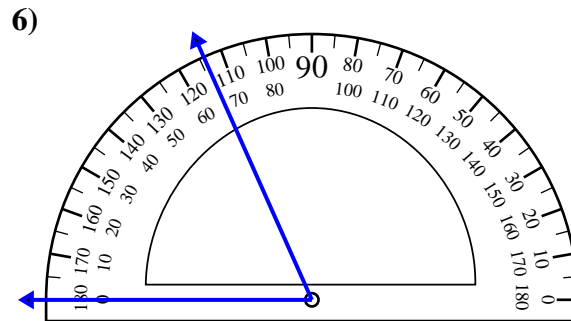
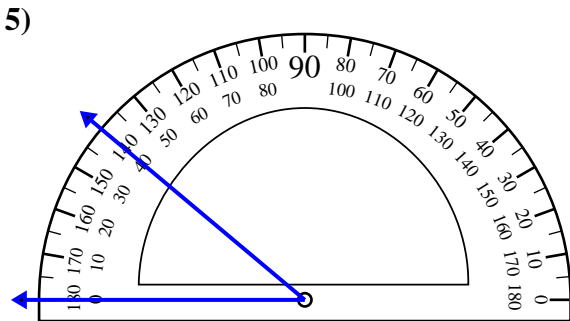
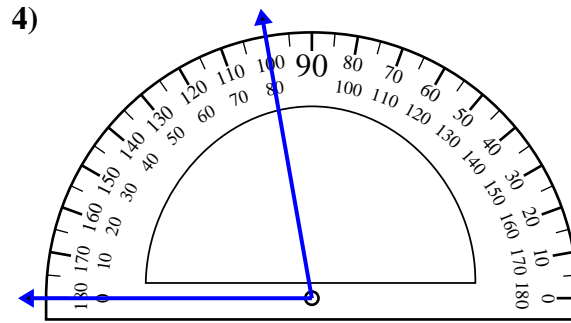
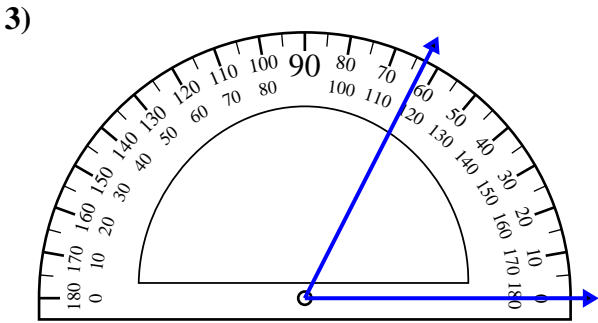
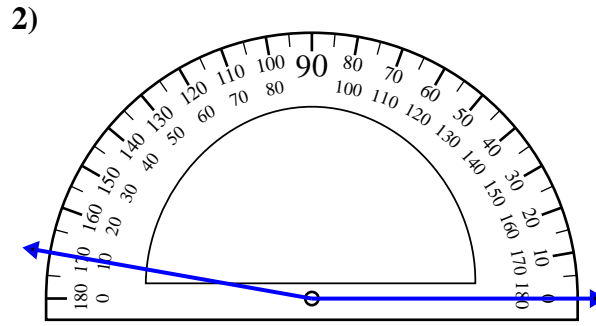
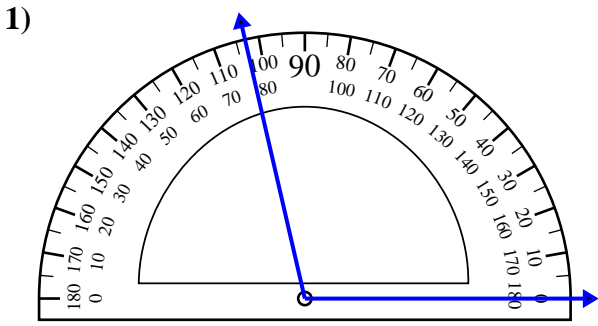


Risposte

1. _____
2. _____
3. _____
4. _____
5. _____
6. _____
7. _____
8. _____
9. _____
10. _____



Usa il goniometro per determinare ogni angolo.



Risposte

1. 103°
2. 170°
3. 63°
4. 80°
5. 40°
6. 66°
7. 49°
8. 102°
9. 23°
10. 147°