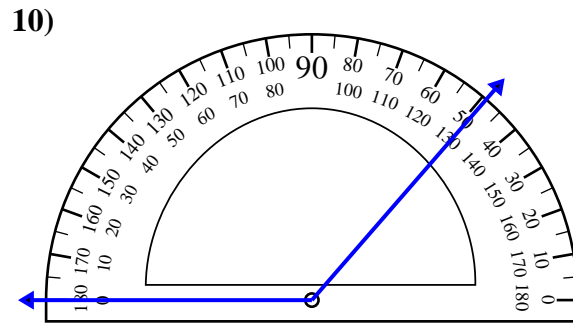
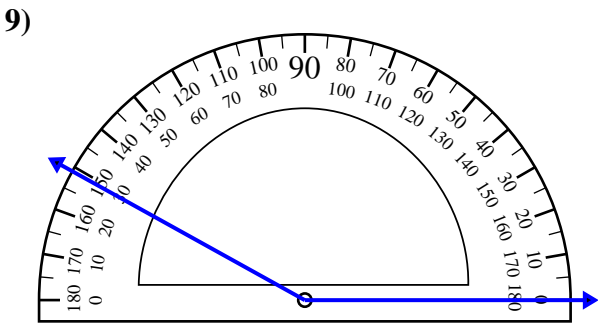
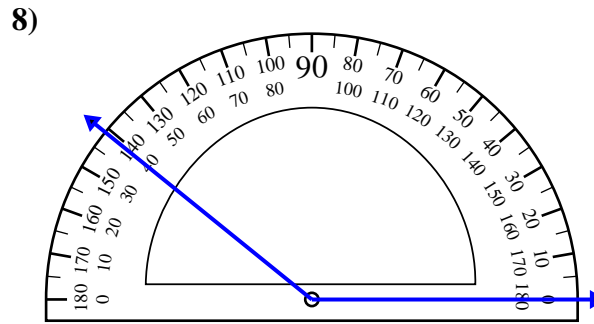
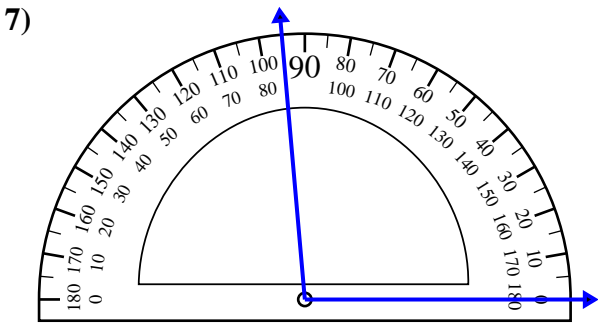
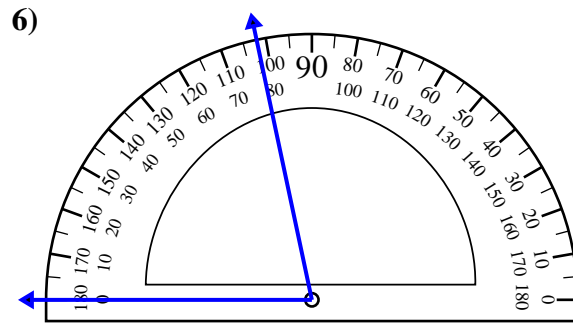
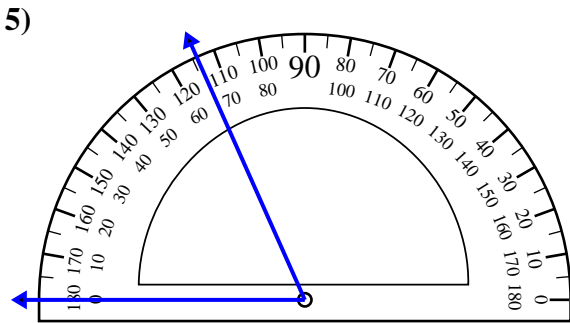
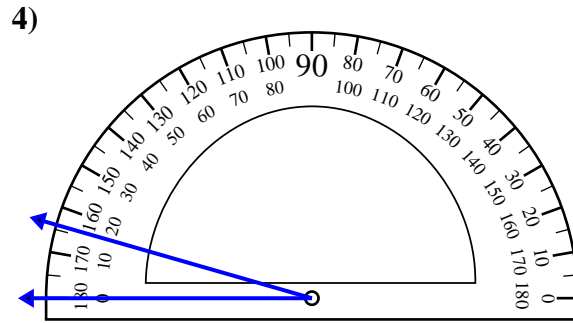
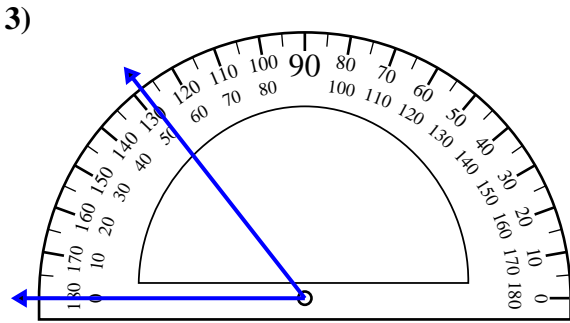
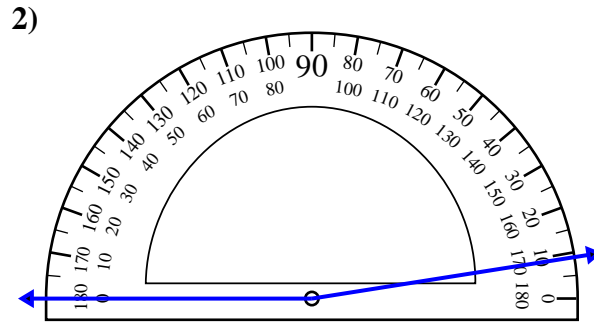
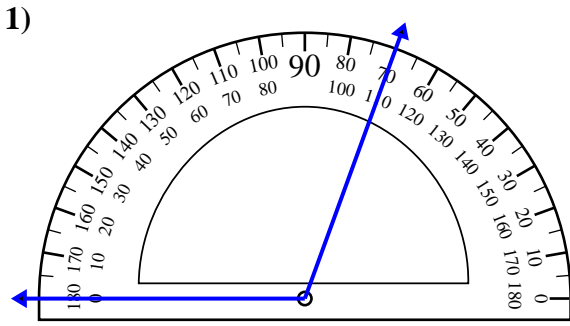




Usa il goniometro per determinare ogni angolo.

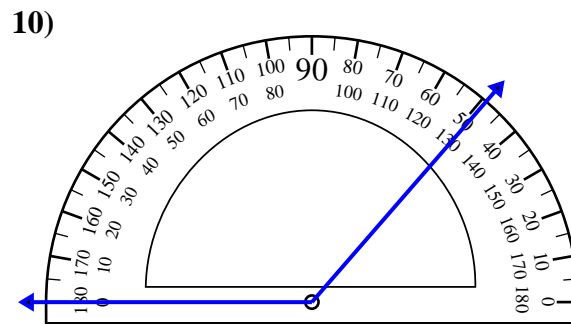
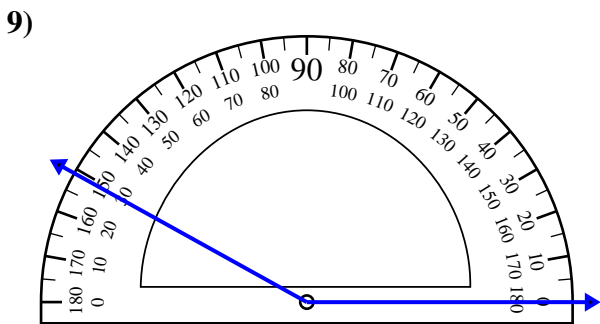
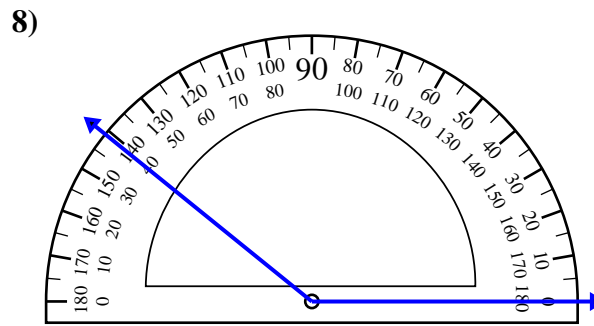
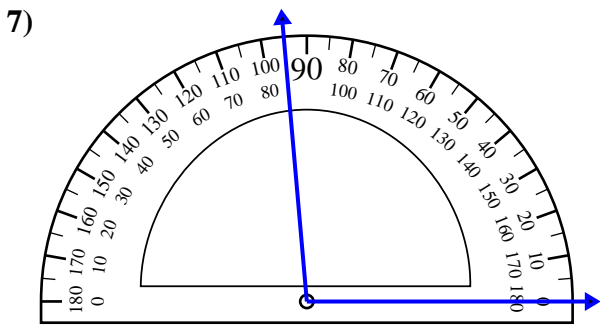
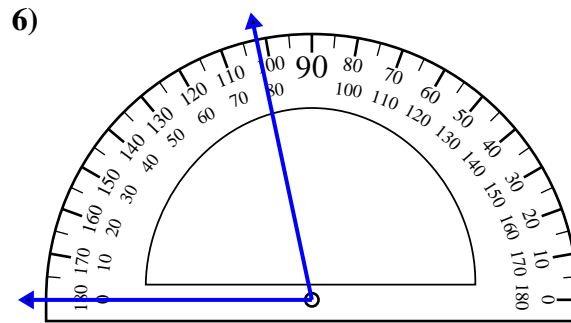
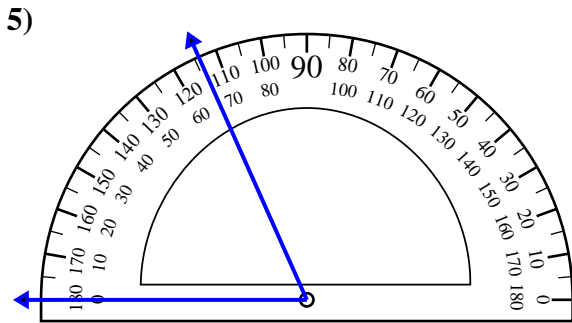
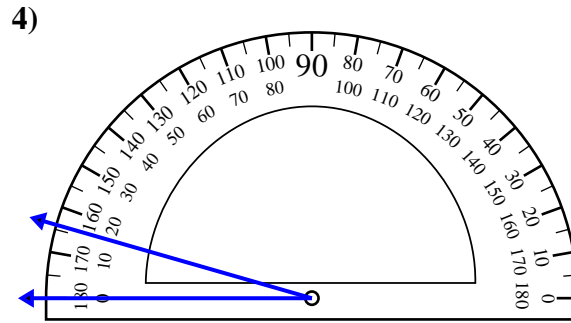
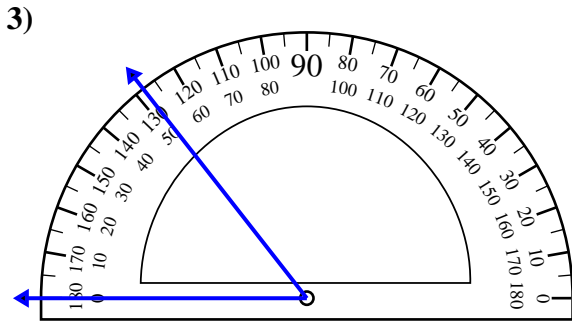
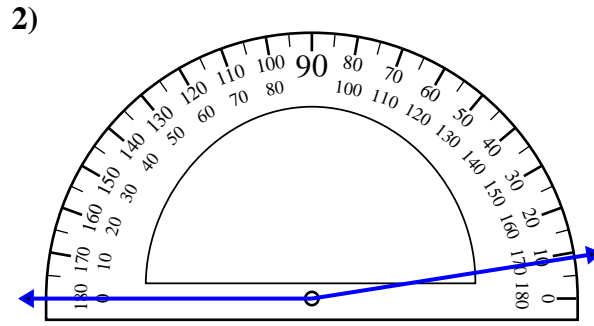
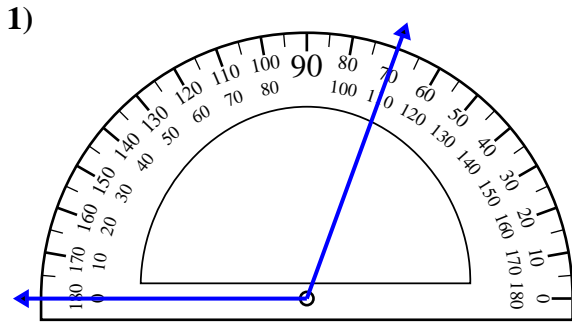


Risposte

1. _____
2. _____
3. _____
4. _____
5. _____
6. _____
7. _____
8. _____
9. _____
10. _____



Usa il goniometro per determinare ogni angolo.



Risposte

1. 110°
2. 171°
3. 52°
4. 16°
5. 66°
6. 78°
7. 95°
8. 141°
9. 151°
10. 131°