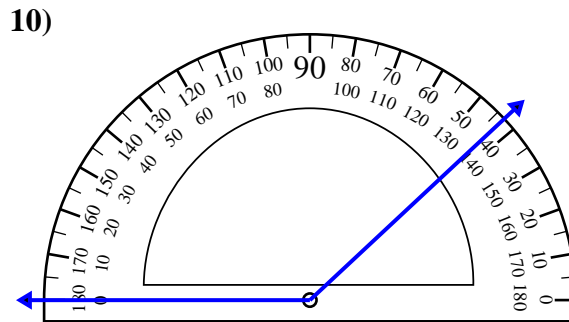
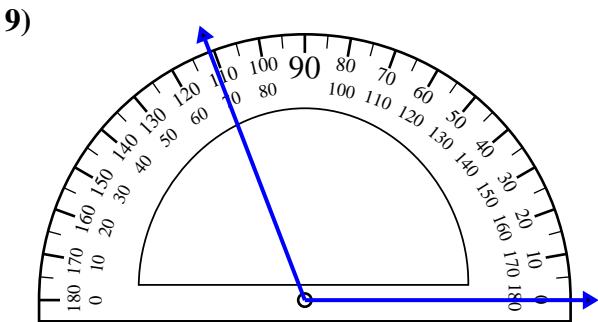
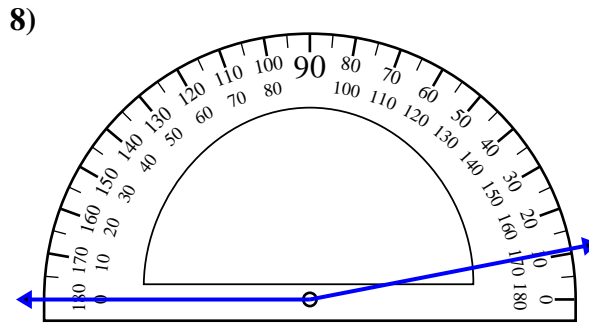
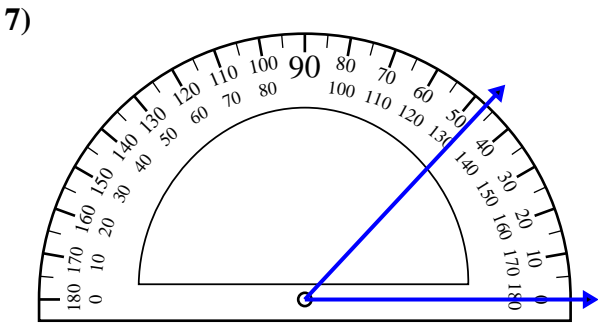
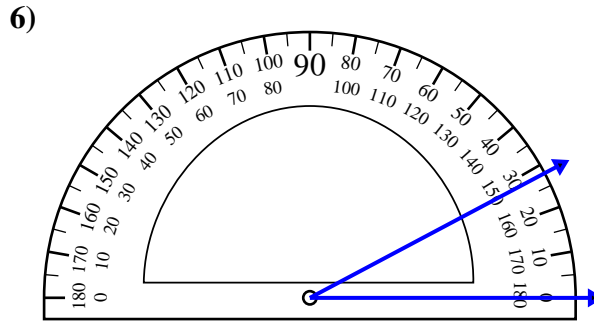
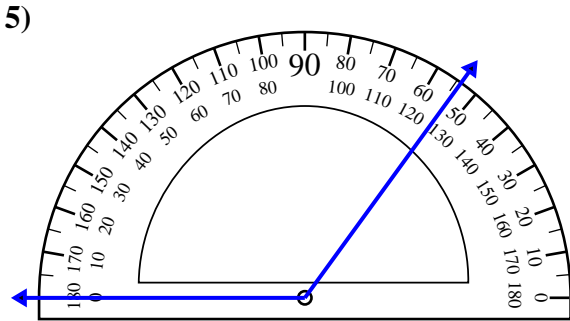
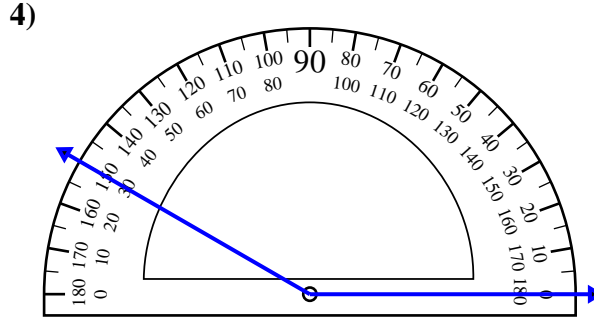
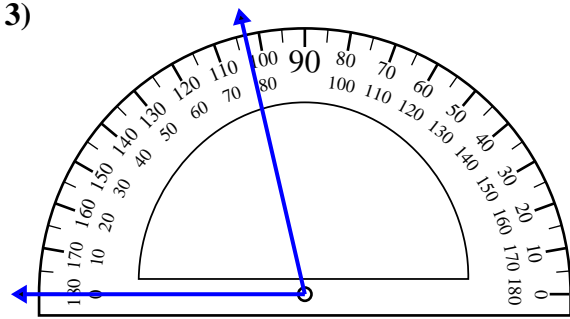
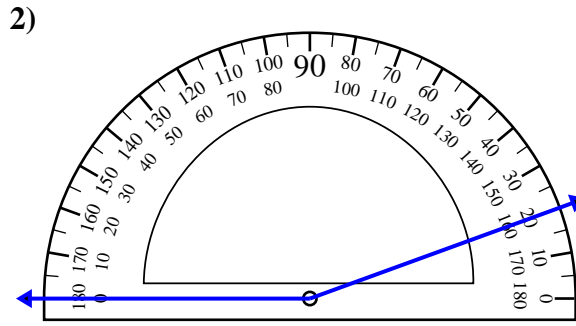
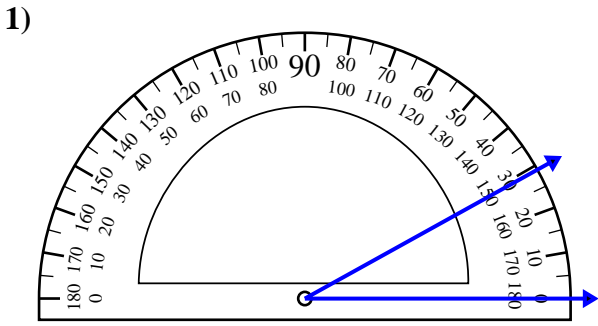




Usa il goniometro per determinare ogni angolo.

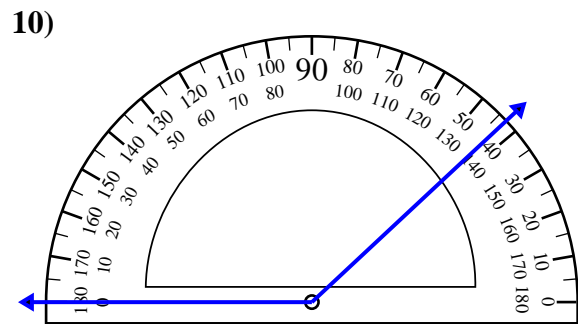
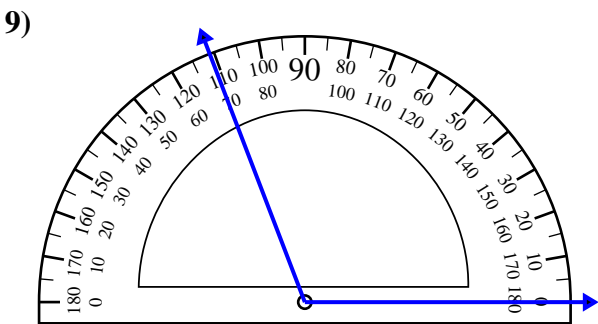
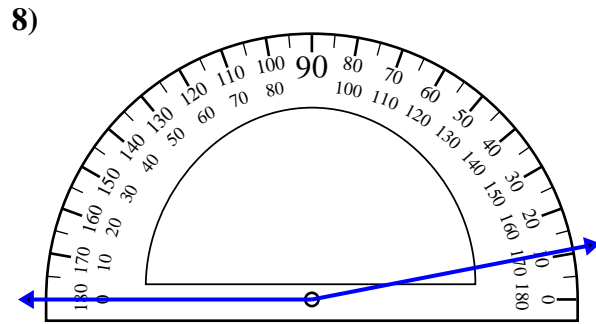
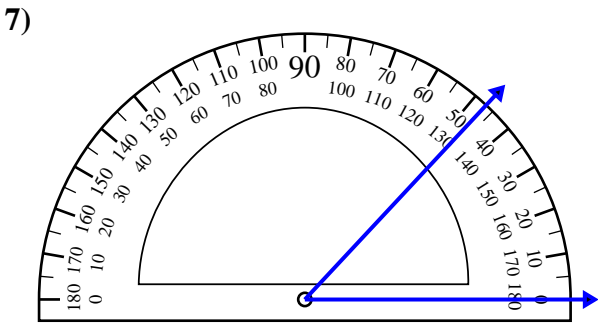
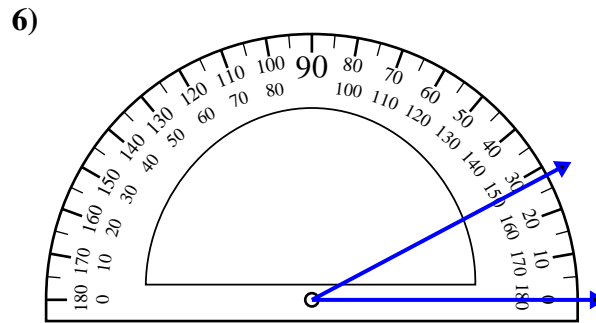
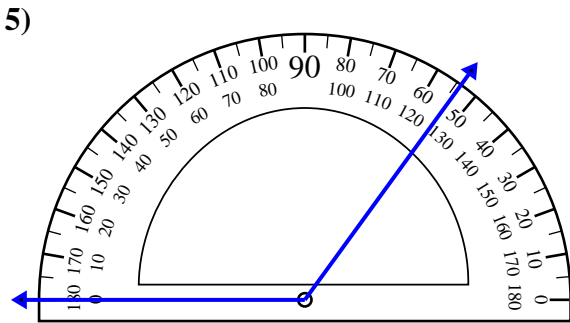
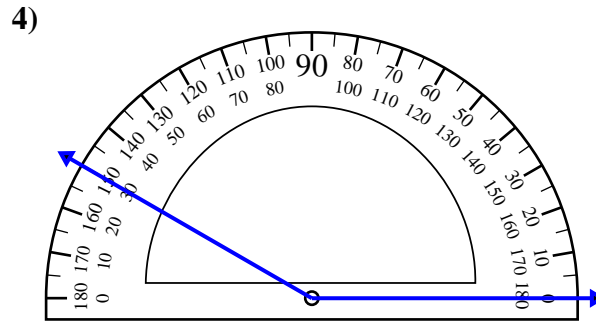
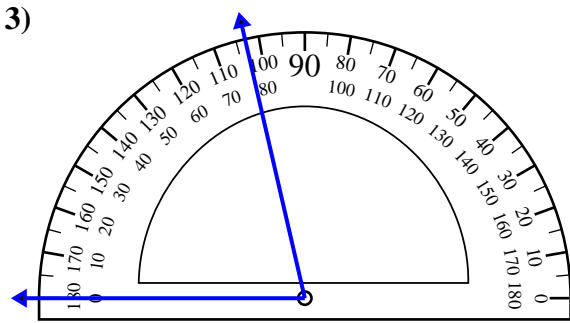
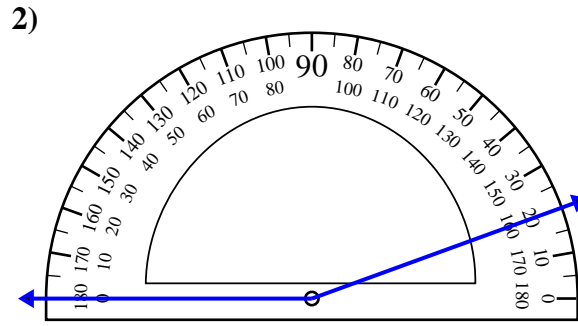
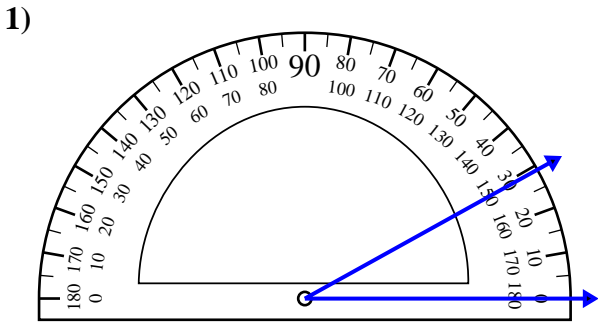


Risposte

1. _____
2. _____
3. _____
4. _____
5. _____
6. _____
7. _____
8. _____
9. _____
10. _____



Usa il goniometro per determinare ogni angolo.



Risposte

1. 29°
2. 160°
3. 77°
4. 150°
5. 126°
6. 28°
7. 47°
8. 169°
9. 111°
10. 137°