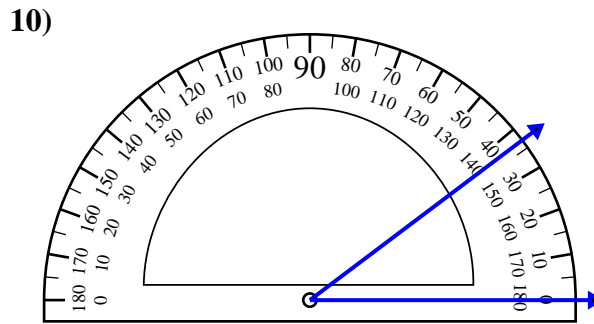
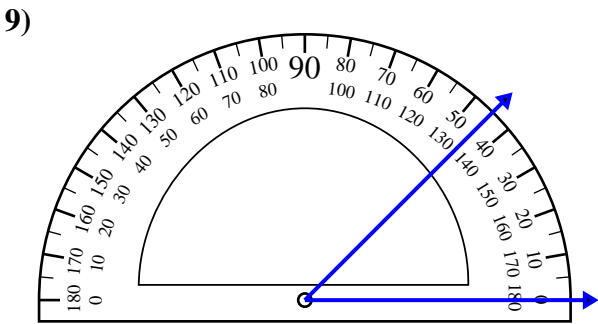
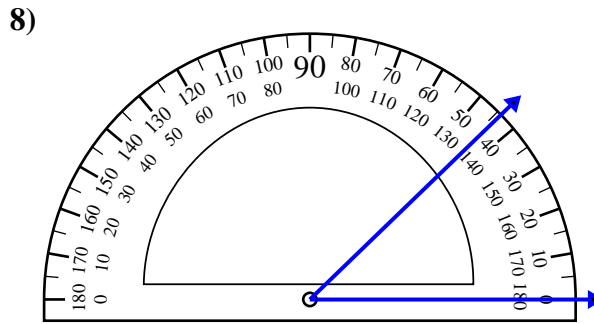
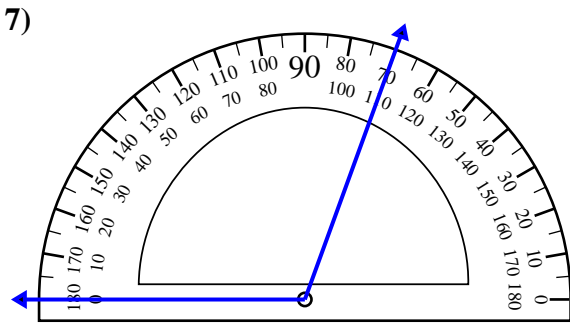
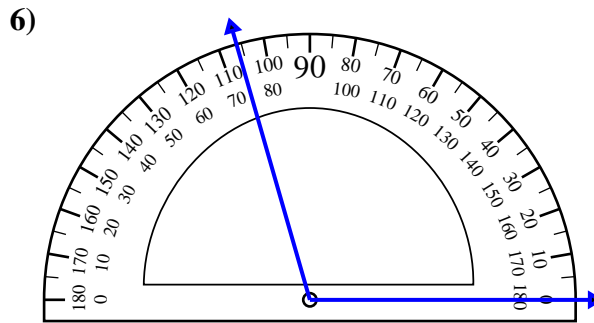
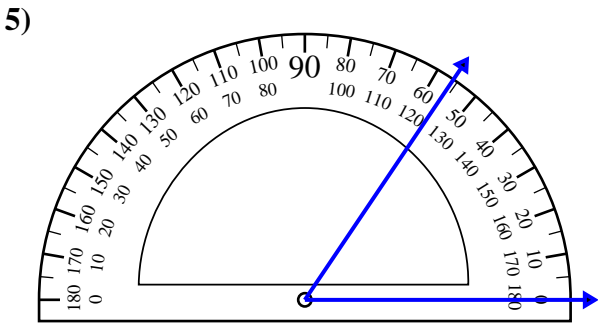
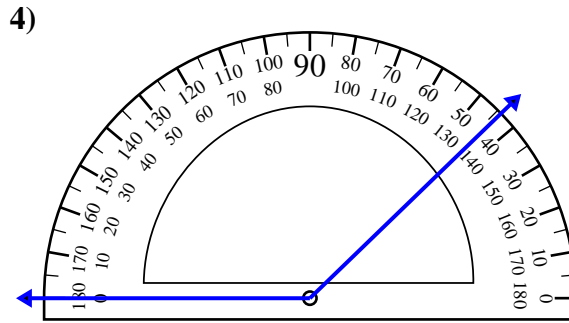
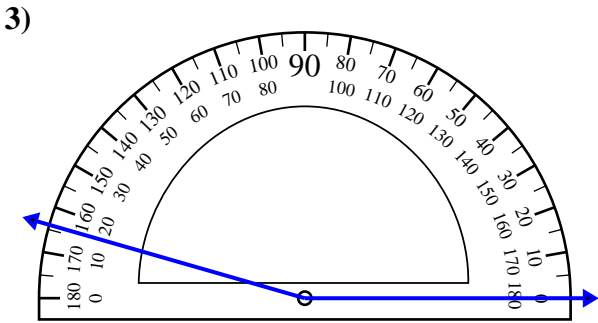
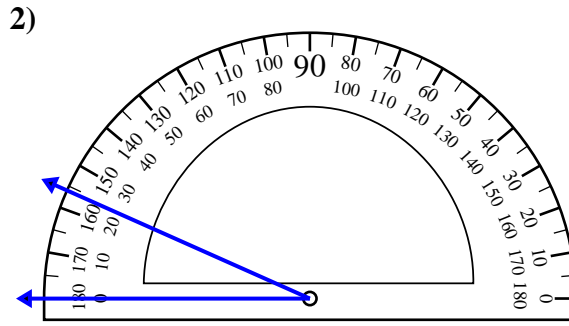
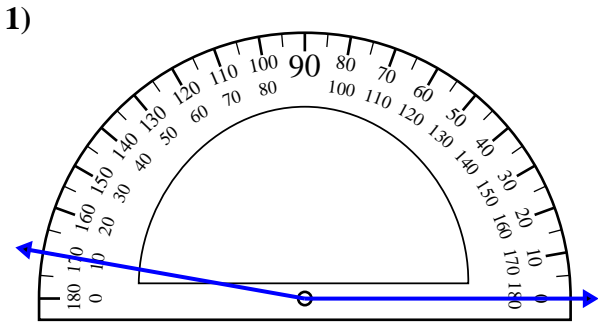




Usa il goniometro per determinare ogni angolo.

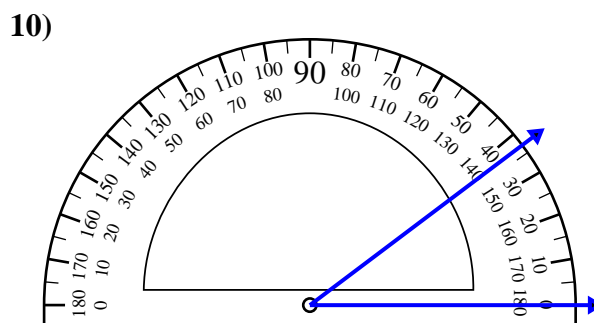
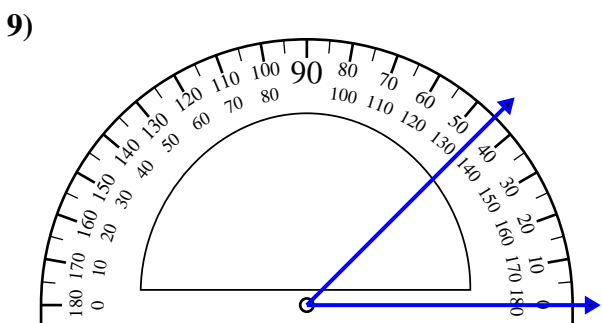
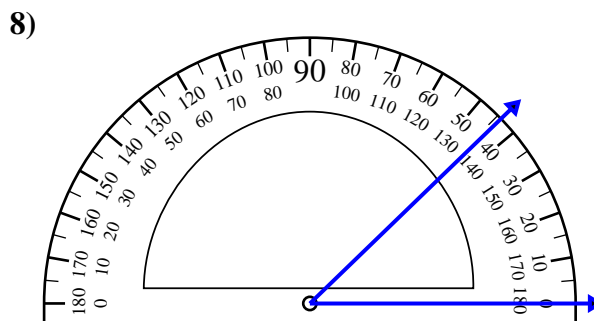
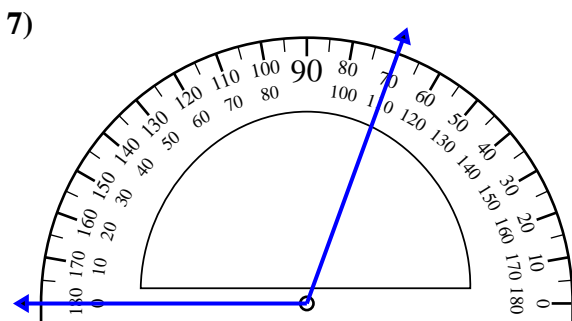
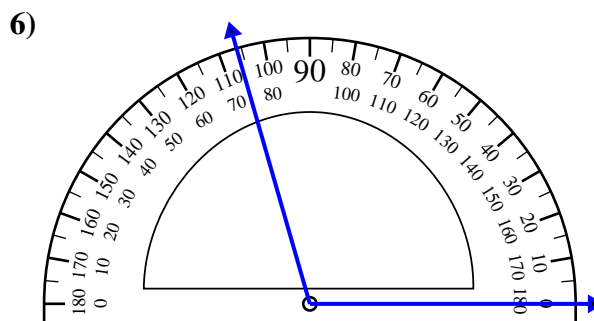
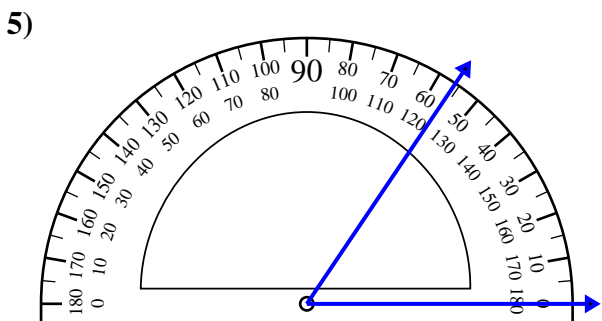
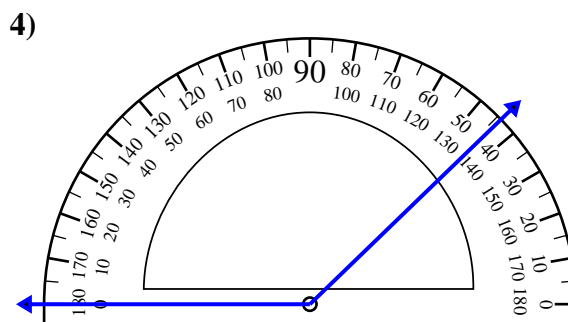
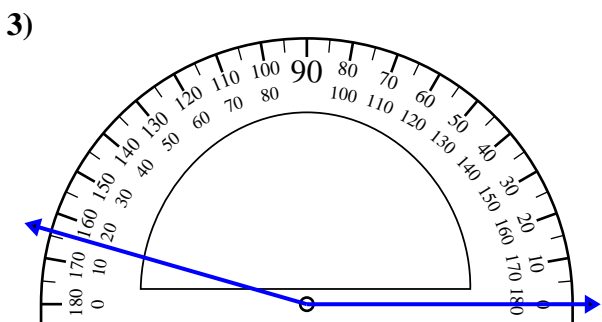
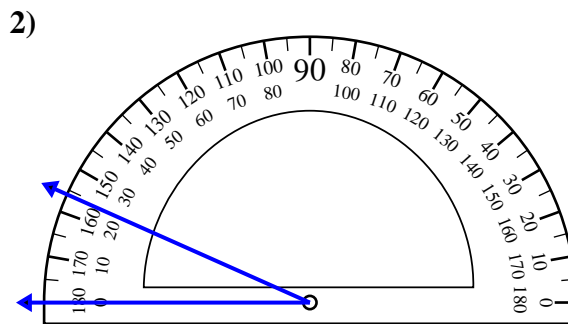
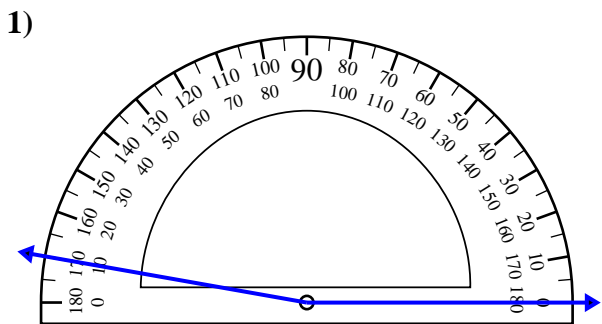


Risposte

1. _____
2. _____
3. _____
4. _____
5. _____
6. _____
7. _____
8. _____
9. _____
10. _____



Usa il goniometro per determinare ogni angolo.



Risposte

1. 170°

2. 24°

3. 164°

4. 136°

5. 56°

6. 106°

7. 110°

8. 44°

9. 45°

10. 37°